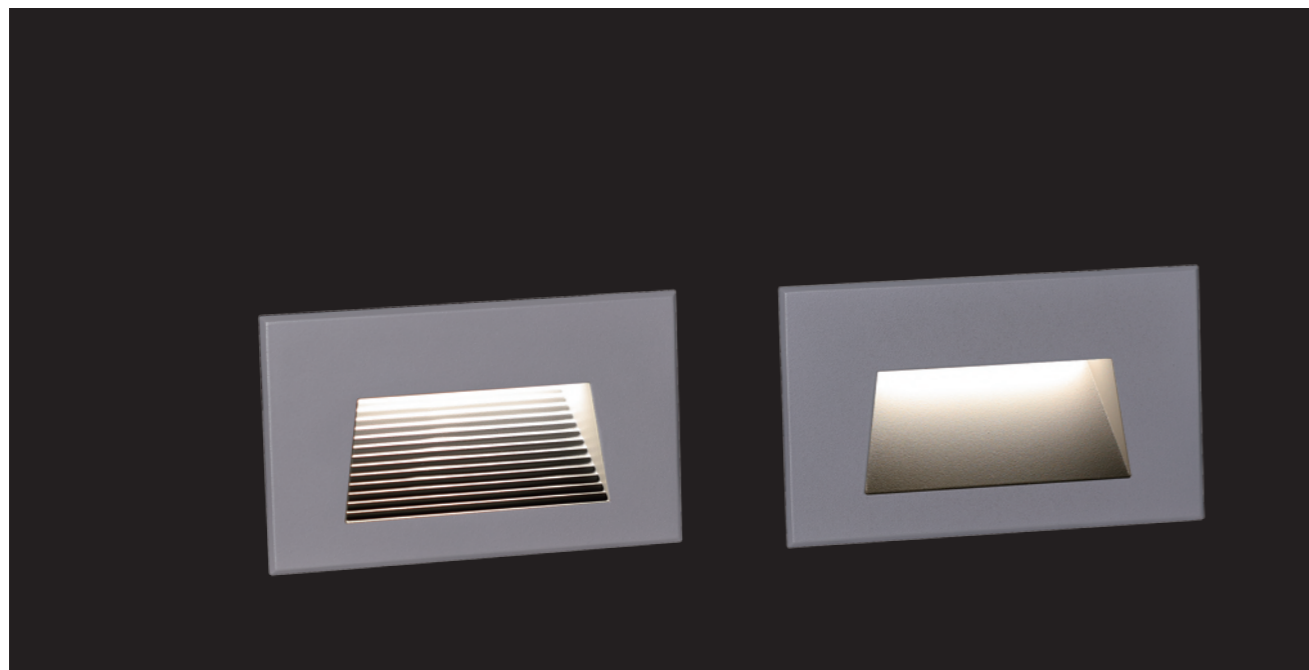




# Giza FF2034



## Recessed LED Stair Light and Wall Light



GKD1FA2034

GKD1FF2034



Application Demo of GKD1FA2034

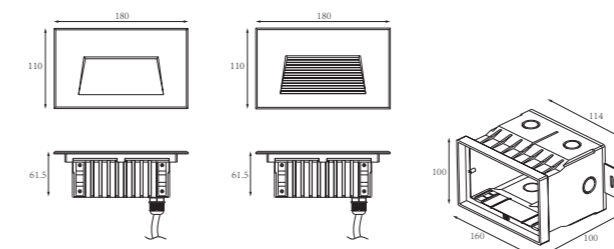
LED Colour Temperature

- 3000K
- 4000K
- 6000K

Optics

- N/A

Outer Dimensions



GKD1FF2034

GKD1FA2034

Mounting sleeve 091#

Material specifications

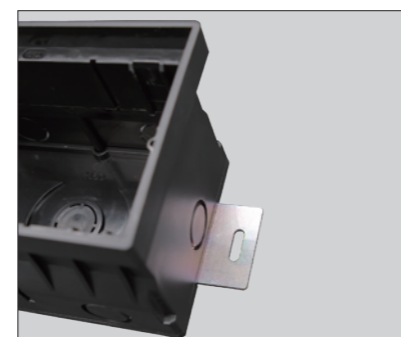
Housing	12# Die-casting grey powder coated aluminum, T=60-80um Adhesion of ISO class 1/ASTM class 4B
Front cover	12# Die-casting aluminum <b>RAL7037</b> powder coated T=60-80um. Adhesion of ISO class 1/ASTM class 4B;
LED	<b>SMD3030</b> type LED
Cable gland	IP-67 copper and nicked coated
Gasket	Molding shaped silicone seal
LED Driver	Constant Voltage Input, Constant Current Output
Operating temperature	-20°C~40°C
Power Cable	H05RN-F 2X1.0mm <sup>2</sup> L=0.5m (low voltage) H05RN-F 3X1.0mm <sup>2</sup> L=0.5m (high voltage)
Mounting sleeve	ABS 091#
Dimmable Support	<b>Triac PWM 1-10V Dali</b>

Front Cover Color Option

—Basic Sanded Dark Grey KAP 7037	
—Secondary Silver Grey KAP 9022	
Sanded Black RAL9005	



The clips have been specially modified and upgraded to have a stronger structure in order to make up the absence of the screw fixing.



There are two metal support plates on the bottom of the sleeve. It is used for fixing and preventing the mounting sleeve shifting while filling the concrete. These will simply installer and electrician while they are recessing the sleeves.

Item	Light source	Input voltage(V)	Typical operating current(mA)	Typical consumption(W)	Typical luminance(lm)	IK rate
GKD1FA2034	1x10W	24V DC 120/240	24V = 227	24V = 12	Cool white =103 Warm white =96.5	10
			120V = 102	120V = 13.2		
			240V = 57	240V = 13.2		
GKD1FF2034	1x10W	24V DC 120/240	24V = 227	24V = 12	Cool white =113.7 Warm white =104.3	10
			120V = 101	120V = 13.2		
			240V = 56	240V = 13.2		

