

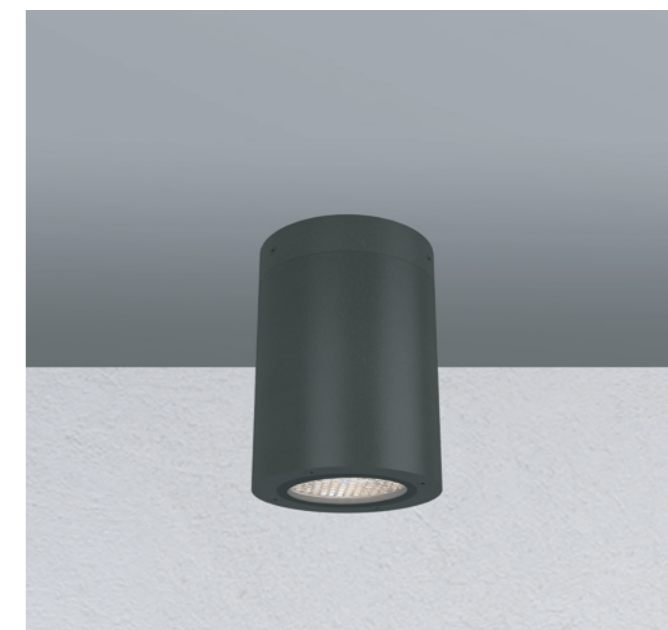
## Crest RL 130

### Surface Mounted LED Down Light IP65

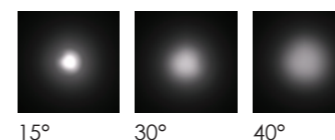
LED Colour Temperature    Optics

- 3000K
- 4000K
- 5000K

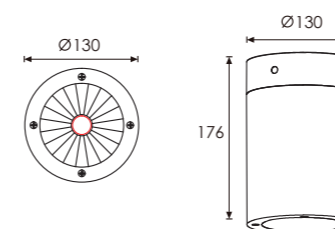
	R20 R0115C075XL 15° R0130C075XL 30° R0140C075XL 40°
-------------------------------------------------------------------------------------	--------------------------------------------------------------



#### R20



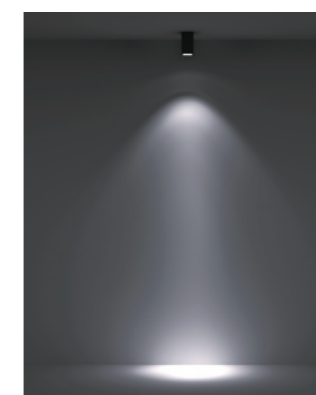
Outer Dimensions    Unit:mm



Material specifications

Housing Material	Extruded aluminum alloy #6063;
Painting	Powder coating ,T= 60-80 um./Adhesion of ISO class 1/ASTM class 4B
Reflector	Optical reflector. efficiency≥85%
Light source	NICHIA
Power Cable	H05RN-F 2X1.0mm <sup>2</sup> L=0.3m(low voltage) H05RN-F 3X1.0mm <sup>2</sup> L=0.3m(High voltage)
Operating temperature	-20°C~40°C

Housing Color Option



Item	Light source	Lens	The manufacturer selected lens degree(°)θ1/2	Input voltage(V)	Typical operating current(mA)	Typical consumption(W)	Typical luminance(lm)	IK rate
<b>GKR8CI0170</b>	1×18W	R20	30°	24V DC 120/240	24V = 840 120V = 172 240V = 91	24V = 20.4 120V = 20.6 240V = 20.9	Cool white=2400 Warm white=2105	06

