



greenlux
cost reduction LED lighting

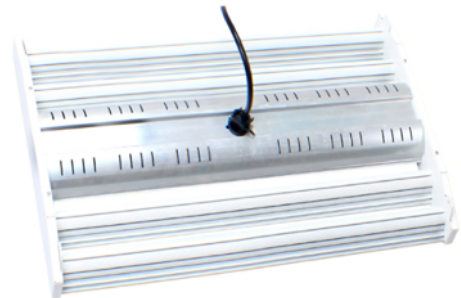
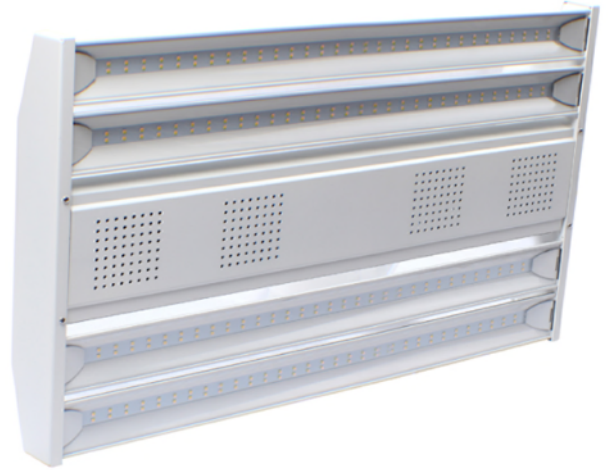
Infinity 01 Linear LED High Bay

Available in Multiple Wattage
80% lumen maintenance at 50,000 hours

- Available 50W/80W/100W/120W/150W/200W/240W/300W
- Anti-glare design, UGR<19
- Excellent thermal management
- High efficiency Philips chipset up to 130lm/W
- High quality Pure Aluminum Housing
- Australian Standard Safety Driver
- 1-10V Dimmer option
- IP20 Rated
- Hanging & Surface Mounted Installation
- 5 Years Warranty
- Applications ideal for factories, gyms, airports, petrol stations, overpasses and warehouses, car parks, loading decks

Specifications

Colour Range	2700k ~ 6500k
Power Consumption	50W ~ 300W
Luminous Flux	130lm/W
Input Voltage	120V ~ 277V AC
Power Factor	>0.95
Chipset	Philips
CRI	>80
Beam angle	120°
IP Rating	IP 20
Dimmable	1-10V (option)



Dimensions & Materials

Product Dimensions (mm)	50/80W	557 * 245 * 58
	100W	557 * 359 * 58
	150W	557 * 473 * 58
	100/120/150/200W	1094 * 245 * 58
	200/240/300W	1094 * 359 * 58
	300W	1094 * 473 * 58
Housing Material	Aluminum + PC	
Housing Colour	White	

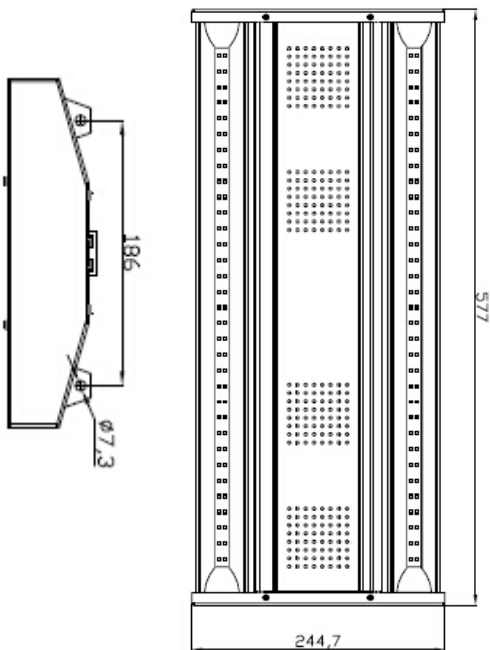




greenlux
cost reduction LED lighting

Infinity 01 Linear LED High Bay

Dimensions



(mm)

50/80W	557 * 245 * 58
100W	557 * 359 * 58
150W	557 * 473 * 58
100/120/150/200W	1094 * 245 * 58
200/240/300W	1094 * 359 * 58
300W	1094 * 473 * 58





greenlux
cost reduction LED lighting

Infinity 01 Linear LED High Bay

Model#	Dimensions (mm)	Weight (kg)	Beam Angle	CCT	Lumens	LED	Dimmer (option)
GBINF-50W-01	557*245*58	3kg	120°	2700-6500k	6500	Philips	1-10V
GBINF-80W-01					10400		
GBINF-100W-01	557*359*58	4kg	120°	2700-6500k	13000	Philips	1-10V
GBINF-150W-01	557*473*58	4.5kg	120°	2700-6500k	19500	Philips	1-10V
GBINF-100W-01	1094*245*58	6.8kg	120°	2700-6500k	13000	Philips	1-10V
GBINF-120W-01					15600		
GBINF-150W-01					19500		
GBINF-200W-01					26000		
GBINF-200W-01					26000		
GBINF-240W-01	1094*359*58	7.5kg	120°	2700-6500k	31200	Philips	1-10V
GBINF-300W-01					39000		
GBINF-300W-01	1094*473*58	8kg	120°	2700-6500k	39000	Philips	1-10V

