

Eclipse Slim Series LED Canopy Light



Features

- » High efficiency >115LM/W
- » Die-casting housing with TRAPEZOID inner structure
- » Creative mounting bracket
- » IP65 waterproof
- » Certified by SAA, CE, RoHS, UL, DLC 4.2
- » 5 years warranty
- » TM-21 >54000hrs

Product Details



Overview

Power:	35W/70W	Efficacy:	>115LM/W
Input Voltage:	AC90-305V	CCT:	3000K/4000K/5000K/6500K
CRI:	>70 (other option:80/90)	Beam Angle:	145°
Housing Color:	Black,Bronze,White	IP Rating:	IP65
Dimmable:	Optional	Sensor:	Optional

Technical

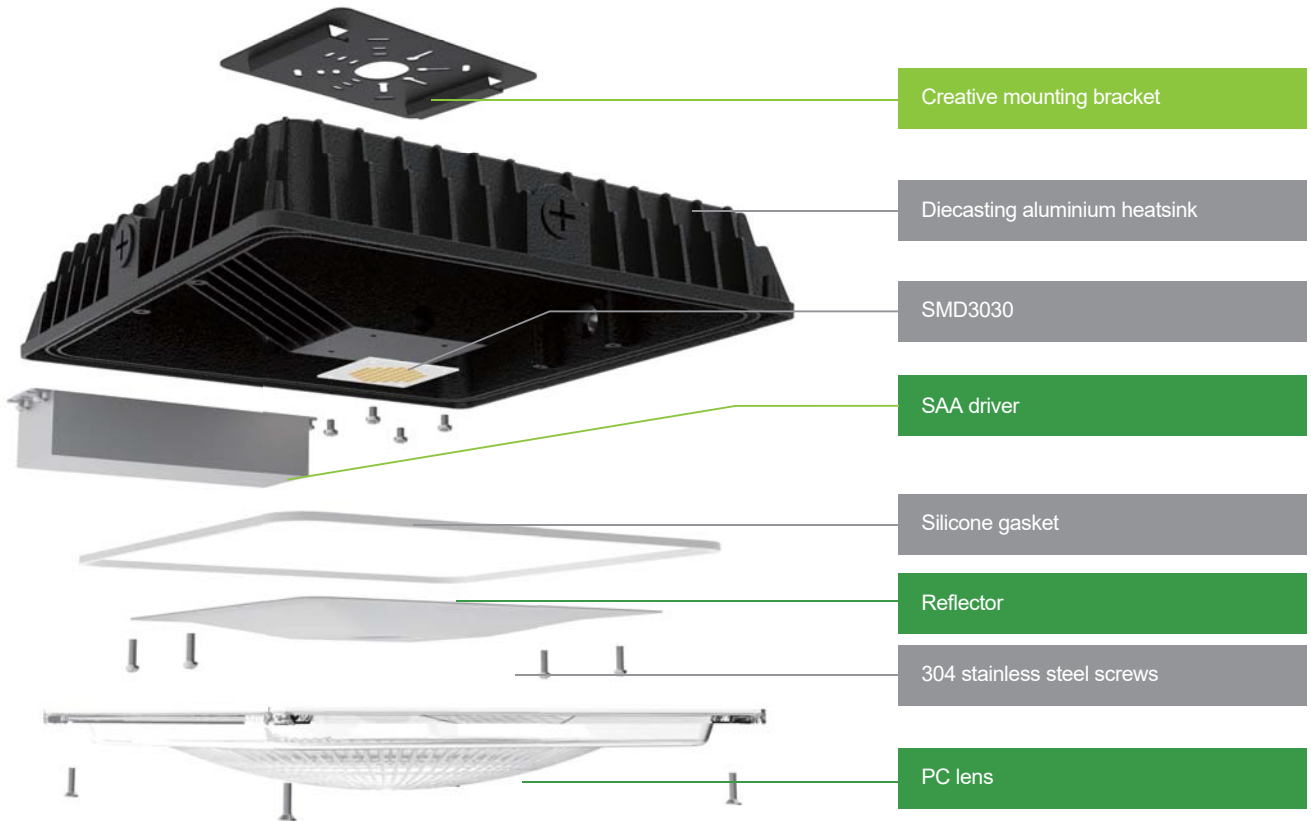
Model	wattage	PF	Color	Luminous Flux(lm)	L70(hours)
GHECL-35W-S	35W	≥ 0.90	NW	4000lm	> 54000
GHECL-70W-S	70W	≥ 0.90	NW	7850lm	> 54000

Remarks:

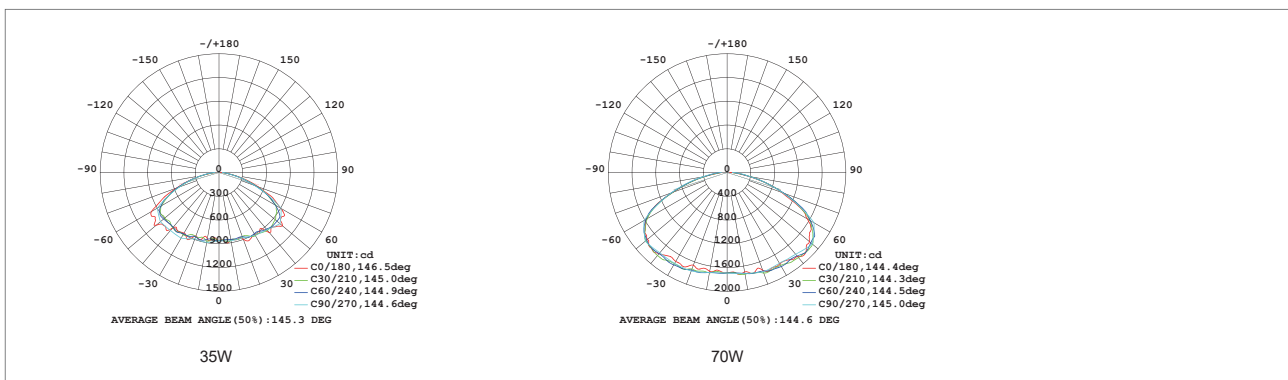
- 1.Lumen is based on the condition of Ta<25 C with a tolerance of ±15 %.
- 2.Operating temperature: -20 to 45 C;
Storage temperature: -25 to 55 C;

Eclipse Slim Series LED Canopy Light

Product Details



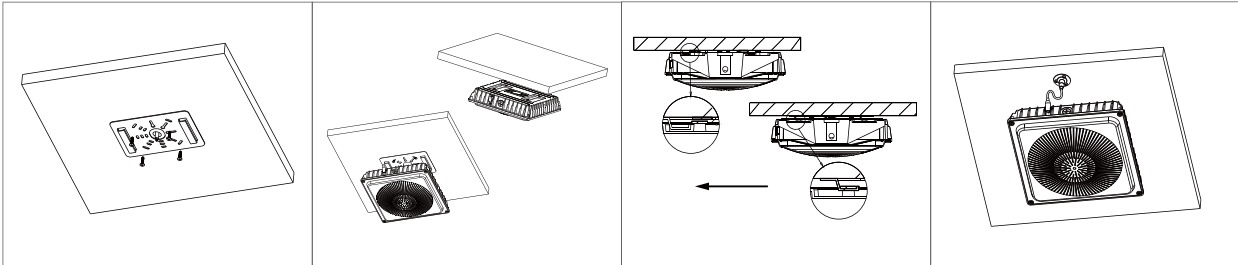
Light distribution curve



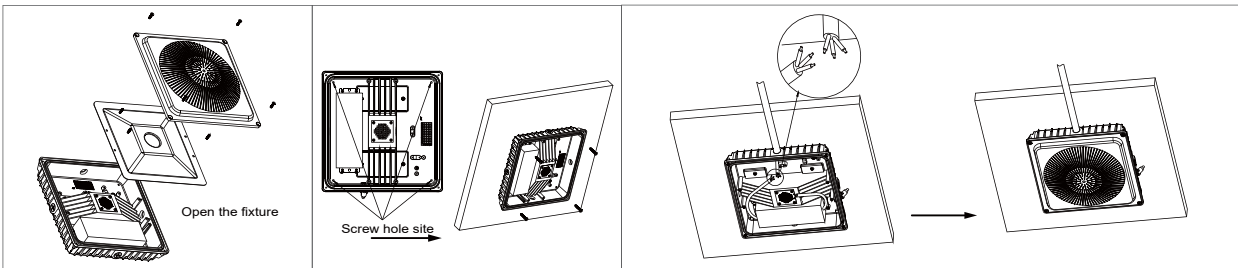
Eclipse Slim Series LED Canopy Light

Installation

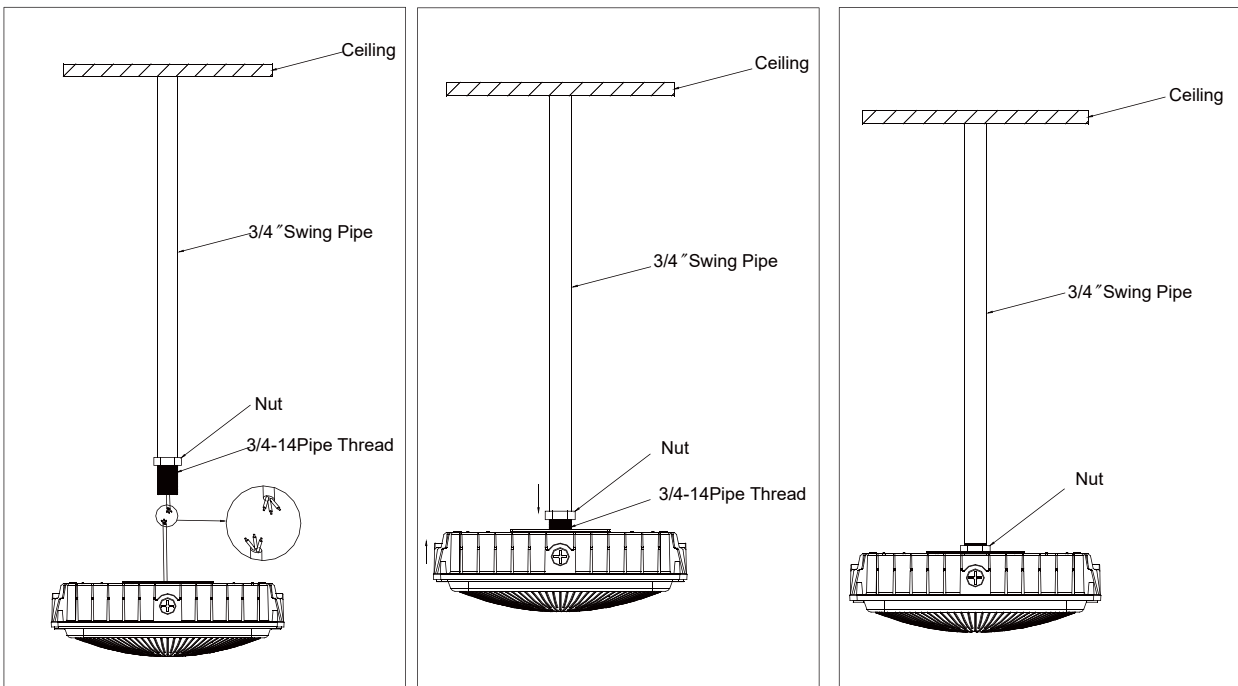
Standard



Other options



Other options

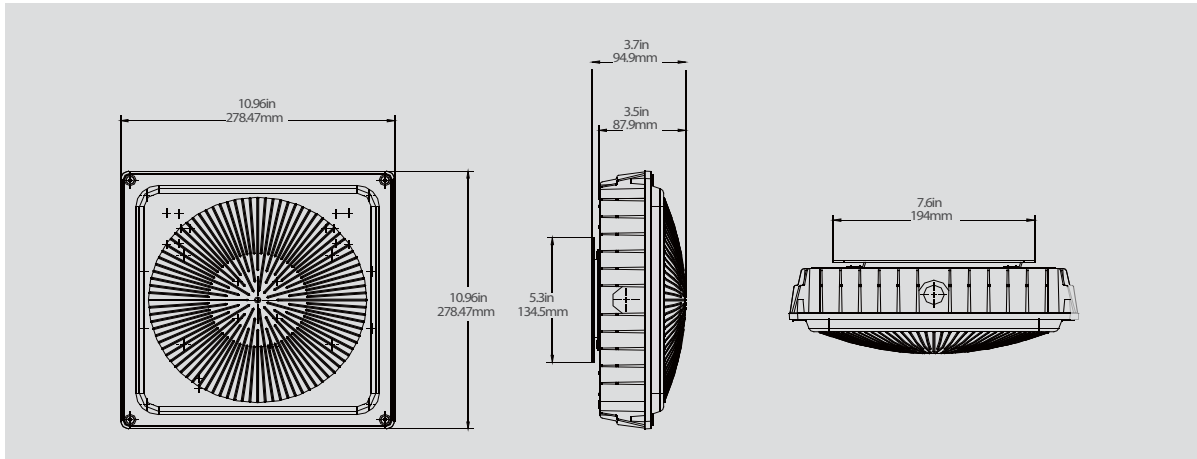


※ Note: If the lamp to be used outside, please keep the connector away from water.



Eclipse Slim Series LED Canopy Light

Dimensions



Model	Power (w)	Net Weight	Dimensions
GHELC-35W-S	35W	2.6kg	278.5*278.5*95mm
GHELC-70W-S	70W	2.6kg	278.5*278.5*95mm

Application

For parking garage, corridors of hotel, hospital, restaurant; toll station, service station and so on.

