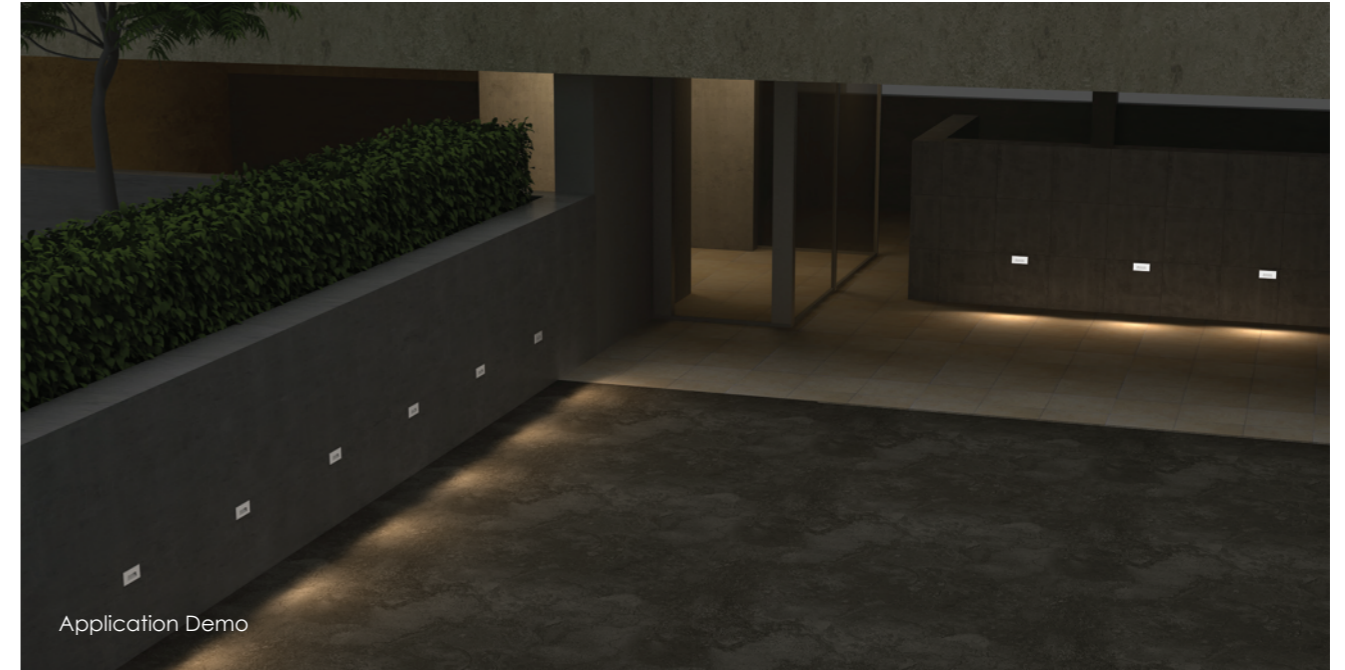


GKD1CA0734

GKD1CG0734



LED Colour Temperature

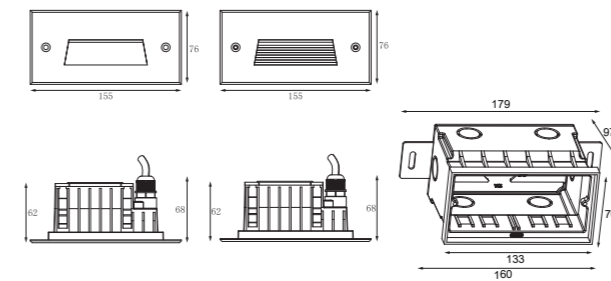
Optics

- 2000K
- 3000K
- 6000K

- N/A

Outer Dimensions

Unit:mm



Material specifications

Housing	12" Die-casting grey powder coated aluminum. T=60-80um Adhesion of ISO class 1/ASTM class 4B
Front cover	12" Die-casting aluminum <b>RAL7037</b> powder coated T=60-80um. Adhesion of ISO class 1/ASTM class 4B;
LED	<b>SMD3030</b> type LED
Cable gland	IP67 PG-9 PA66
Gasket	Molding shaped silicone seal
LED Driver	Constant Voltage Input, Constant Current Output
Operating temperature	-20°C~40°C
Power Cable	H05RN-F 2X1.0mm <sup>2</sup> L=0.5m (low voltage) H05RN-F 3X1.0mm <sup>2</sup> L=0.5m (high voltage)
Mounting sleeve	ABS 090#
Dimmable Support	<b>Triac PWM 1-10V Dalı</b>

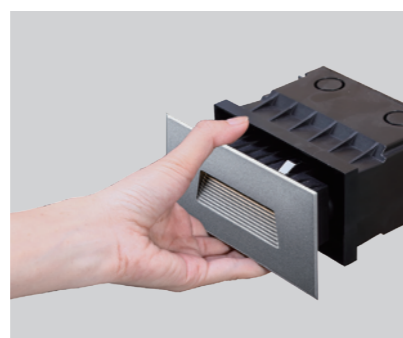
GKD1CG0734

GKD1CA0734

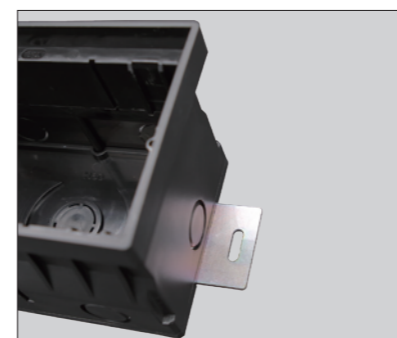
Mounting sleeve 090#

Front Cover Color Option

— Basic	
Sanded Dark Grey KAP 7037	
— Secondary	
Silver Grey KAP 9022	
Sanded Black RAL9005	



The clips have been specially modified and upgraded to have a stronger structure in order to make up the absence of the screw fixing.



There are two metal support plates on the bottom of the sleeve. It is used for fixing and preventing the mounting sleeve shifting while filling the concrete. These will simply install and electrician while they are recessing the sleeves.

Item	Light source	Input voltage(V)	Typical operating current(mA)	Typical consumption(W)	Typical luminance(lm)	IK rate
GKD1CA0734	7×0.5W	24V DC 120/240	24V = 150	24V = 3.5	Cool white =85	10
			120V = 72	120V = 4.8	Warm white =82	
			240V = 40	240V = 4.8		
GKD1CG0734	7×0.5W	24V DC 120/240	24V = 150	24V = 3.5	Cool white =104.5	10
			120V = 72	120V = 4.8	Warm white =97.9	
			240V = 40	240V = 4.8		

