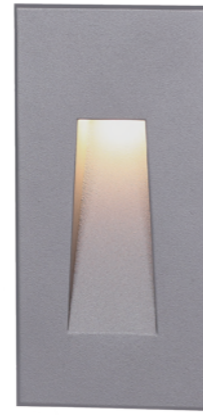




Recessed
LED Stair Light and Wall Light



GKD1CH0158



GKD1CF0158



Application Demo of GKD1CF0158

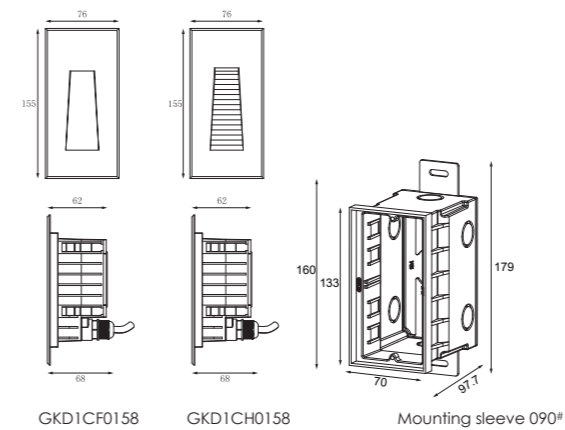
LED Colour Temperature

- 2000K
- 3000K
- 6000K

Optics

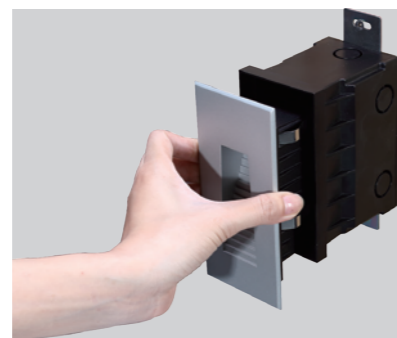
- N/A

Outer Dimensions

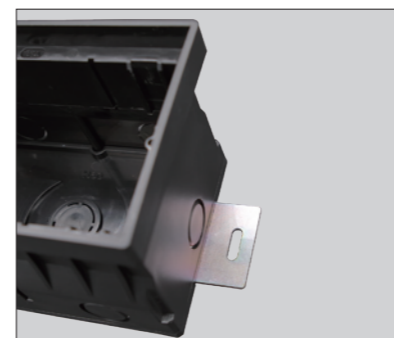


Material specifications

Housing	12# Die-casting grey powder coated aluminum, T=60-80um Adhesion of ISO class 1/ASTM class 4B
Front cover	12# Die-casting aluminum RAL7037 powder coated T=20-30um, Adhesion of ISO class 1/ASTM class 4B
LED	SMD3030 type LED
Cable gland	IP67 PG-9 PA66
Gasket	Molding shaped silicone seal
LED Driver	Constant Voltage Input, Constant Current Output
Operating temperature	-20°C~40°C
Power Cable	H05RN-F 2X1.0mm ² L=0.5m (low voltage) H05RN-F 3X1.0mm ² L=0.5m (high voltage)
Mounting sleeve	ABS 090#
Dimmable Support	Triac PWM 1-10V Dali



The clips have been specially modified and upgraded to have a stronger structure in order to make up the absence of the screw fixing.



There are two metal support plates on the bottom of the sleeve. It is used for fixing and preventing the mounting sleeve shifting while filling the concrete. These will simply install and electrician while they are recessing the sleeves.

Item	Light source	Input voltage(V)	Typical operating current(mA)	Typical consumption(W)	Typical luminance(lm)	IK rate
GKD1CH0158	1×3W	24V DC 120/240	24V = 140	24V = 3.3	Cool white =64 Warm white =55	10
			120V = 36	120V = 4.2		
			240V = 22	240V = 4.4		
GKD1CF0158	1×3W	24V DC 120/240	24V = 140	24V = 3.3	Cool white =62 Warm white =53	10
			120V = 36	120V = 4.2		
			240V = 22	240V = 4.4		

