

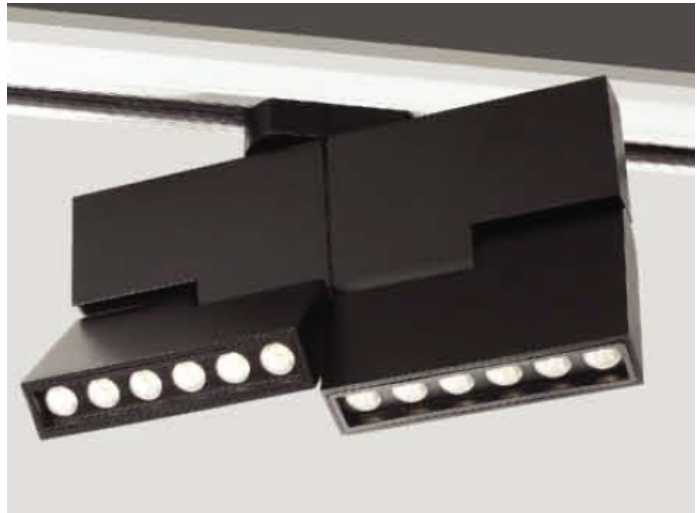


**greenlux**  
cost reduction LED lighting

# Lego Series LED Track Light



**6W**



**12W**

## Specifications

<b>Colour Range</b>	2700 ~ 6500K
<b>Power Consumption</b>	6*1W / 12*1W
<b>Lumens</b>	608 / 1330lm
<b>Input Voltage</b>	100V ~ 240V AC
<b>Chipset</b>	COB
<b>Beam angle</b>	12° / 20° / 30°
<b>Power Factor</b>	>0.9
<b>Dimmer (option)</b>	Triac / 0-10V / Dali
<b>CRI</b>	80 or 90 (option)
<b>Driver</b>	Class II SAA

- Eco-friendly. No UV or IR rays. No mercury or any other hazardous substances
- Adjustable 350° in horizontal direction, 90° in vertical direction
- High quality COB light source
- Performs high efficiency and energy saving, Up to 80% energy saving compared to standard CFL
- High strength PC housing
- IP20 for indoor use only
- 5 Years Warranty
- Applications include shopping centres, galleries, cafes, hotels, theatres, museums & display cases

## Dimensions & Materials

<b>Product Dimensions (mm)</b>	<b>6W</b>	167 * 115 * 25
	<b>12W</b>	167 * 232 * 25
<b>Housing Materials</b>	PC	
<b>Housing Colour</b>	Black	



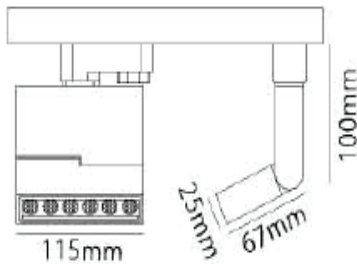


**greenlux**  
cost reduction LED lighting

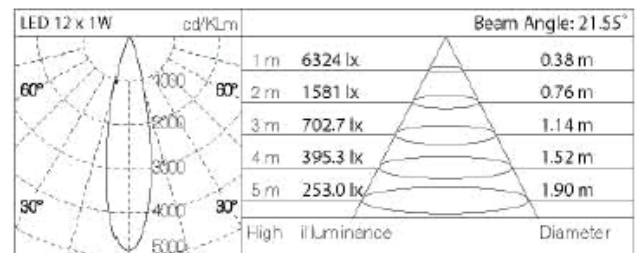
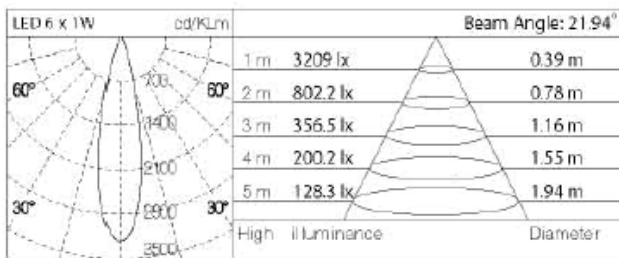
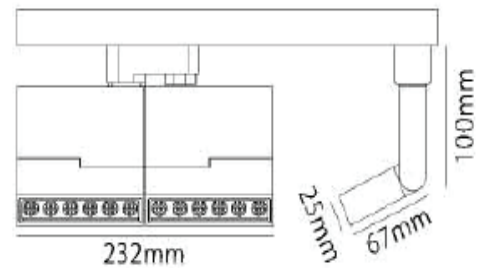
# Lego Series LED Track Light

## Dimensions & Photometrics

### 6\*1W



### 12\*1W



Model#	Dimensions (mm)	IP Rating	Beam Angle	CCT (k)	Lumens	Wattage	LED	Dimmer (option)
GJLEG-6W	167 * 115 * 25	IP20	12°/20°/30°	3000	608	6*1W	COB	Triac Dali 0-10V
GJLEG-12W	167 * 232 * 25			4000 5000 6000				