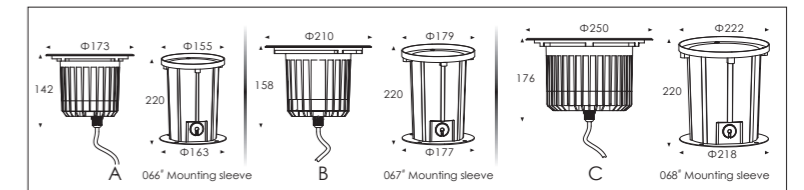
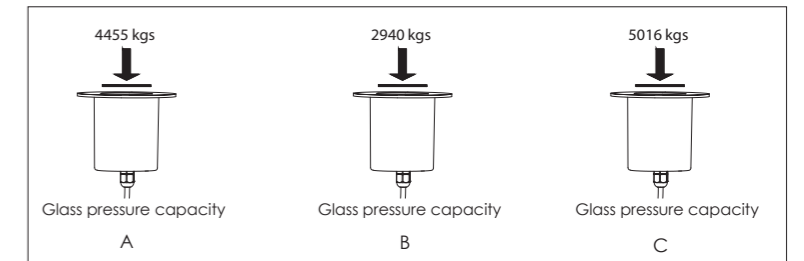
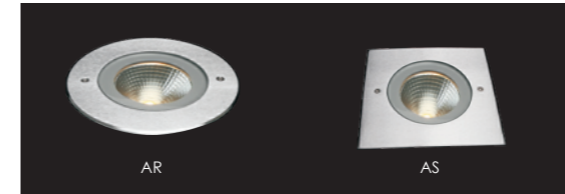
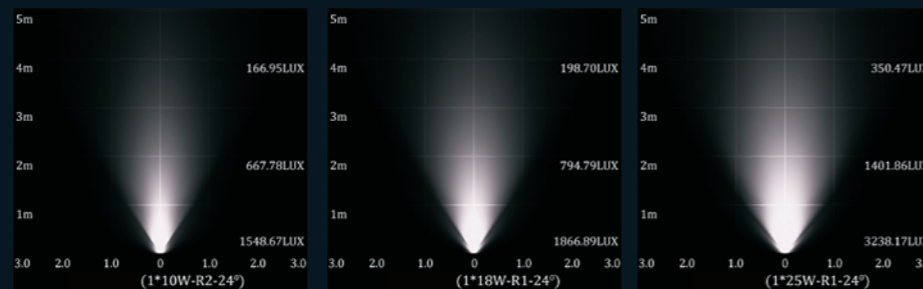
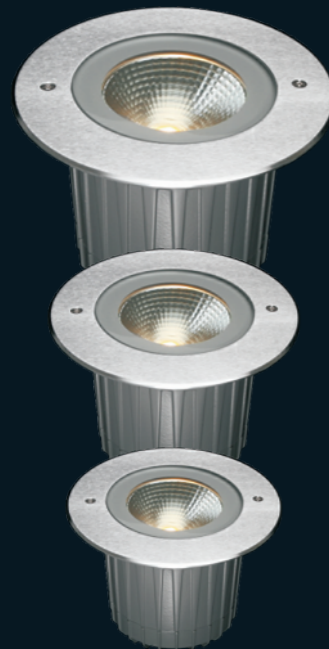


# Inground Series 05

## High Lumen LED Inground Light



### Specifications

Housing	12' die-casting grey powder coated aluminum . T=60-80µm. Adhesion of ISO class 1/ASTM class 4B
Front cover	Stainless steel SUS 316L'
Glass	Step tempered white coating glass. T=10mm
Reflector	Optical Reflector efficiency ≥90%
LED	Multi chip on board LED
Cable gland	IP-68 PG-9 PVC
Gasket	Molding shaped seal
Driver	Constant current output
Operating temperature	-20°C ~40°C
Power cable	H05RN-F 3X1.0mm² L=0.5m (high voltage)
Mounting sleeve	PVC

Item No.	Light source	Reflector	The manufacturer selected reflector degree (θ 1/2)	Input voltage (v)	Typical operating current (mA)	Typical consumption (w)	Typical luminance (lm)	IK rate
GKING-10W-AR-05 GKING-10W-AS-05	1 × 10W BRIDGELUX COB	R2	24	120 / 240	120V=102 240V=64	13	Cool white=550 Warm white=525	07
GKING-18W-BR-05 GKING-18W-BS-05	1 × 18W CITIZEN COB	R1	24	120 / 240	120V=168 240V=88	19.8	Cool white=1200 Warm white=1013	09
GKING-25W-CR-05 GKING-25W-CS-05	1 × 25W CITIZEN COB	R1	24	120 / 240	120V=274 240V=148	32	Cool white=2128 Warm white=1607	10