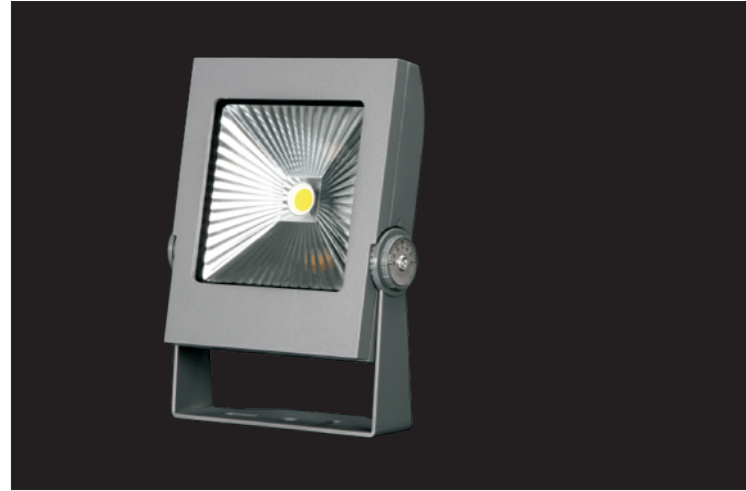


Landscape 08 LED COB Flood Light



A



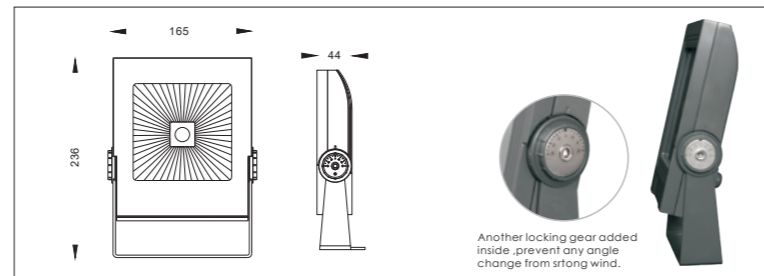
B





Applicable COB LED modul

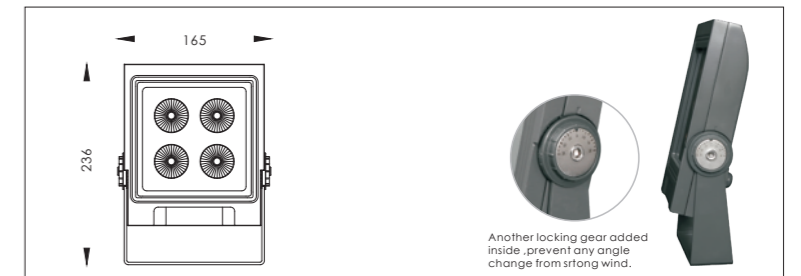
R0118C044XL 18°
R0125C044XL 25°
R0140C044XL 40°



Material specifications

Housing	12" Die-casting powder coated aluminum . T=60-80µm. Adhesion of ISO class 1/ASTM class 4B
Bracket	Powder coated aluminum
Glass	Tempered glass, T=7mm
Reflector	Optical Reflector efficiency≥90%
LED	COB LED 5W
Cable gland	IP-68 PG-9 PVC
Gasket	Tooling shaped seal
Power cable	24V: L=2M H05RN-F 2×1.0mm ² 100/240V: L=2M H05RN-F 3×1.0mm ²

Item No.	Light source	Reflector	The manufacturer selected reflector degree (°)	Input voltage (v)	Typical operating current(mA)	Typical consumption(w)	Typical luminance (lm)	IK rate
GKLAN-20W-A-08	1×20W	R8	100	24VDC 120/240	24V=205 120V=105 240V=960	24V=24.6 120V=24 240V=23	Cool white=1885 Warm white=1678	09



Material specifications

Housing	12" Die-casting powder coated aluminum . T=60-80µm. Adhesion of ISO class 1/ASTM class 4B
Bracket	Powder coated aluminum
Glass	Tempered glass, T=7mm
Reflector	Optical Reflector efficiency≥90%
LED	COB LED 5W
Cable gland	IP-68 PG-9 PVC
Gasket	Tooling shaped seal
Power cable	24V: L=2M H05RN-F 2×1.0mm ² 100/240V: L=2M H05RN-F 3×1.0mm ²

Item No.	Light source	Reflector	The manufacturer selected reflector degree (θ/2)	Input voltage (v)	Typical operating current(mA)	Typical consumption(w)	Typical luminance (lm)	IK rate
GKLAN-20W-B-08	4×5W BRIDGELUX COB	R5	25	24VDC 120/240V	24V=1279 120V=261 240=150	24V=30.7 120V=31 240=33	Cool white=1948 Warm white=1757	09