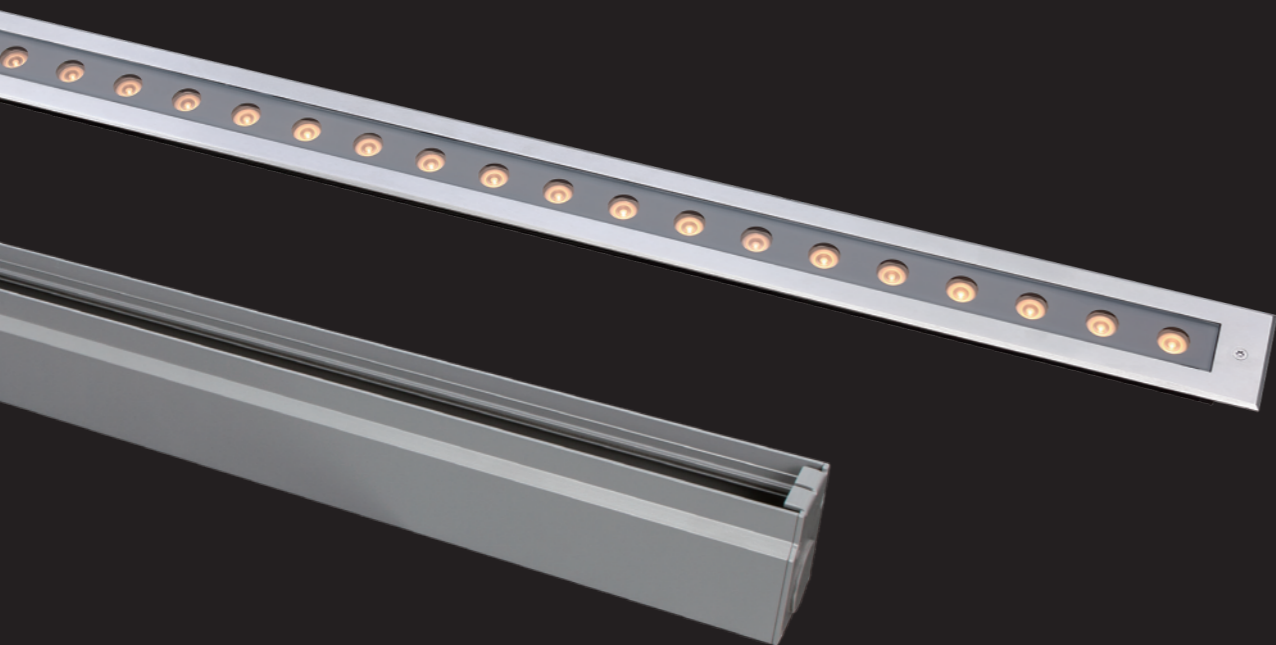
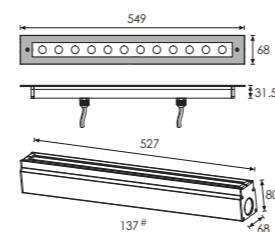


Linear High Lumen

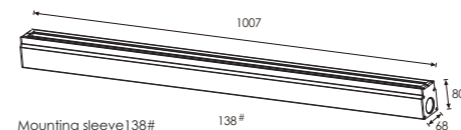
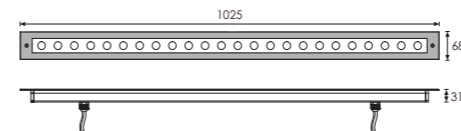
Recessed LED inground light



Outer Dimensions



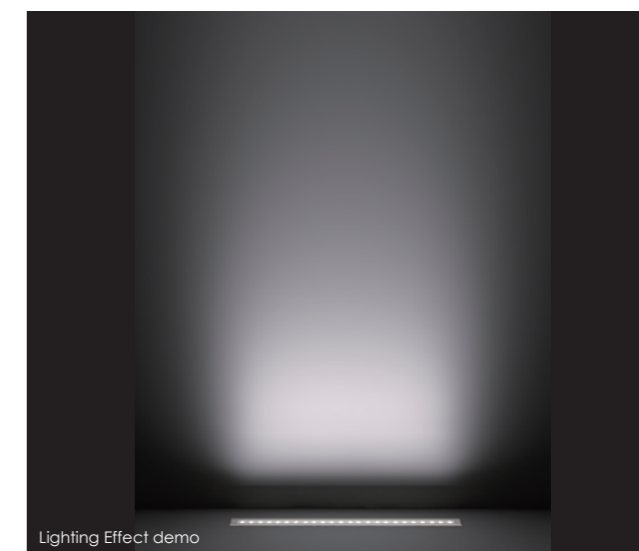
Mounting sleeve 137# GKB2RLB1257



Mounting sleeve 138# GKB2RLB2457

Material specifications

Housing	Extruded aluminum, powder coated
Front cover	Hard chrome-plated stainless steel SUS 316L
Light Window	Tempered frosted step glass, T=6mm
Lens	Optical lens, efficiency ≥ 85%
Cable gland	IP68 PG-9 PA66
Gasket	Glass and housing are silicone sealed
LED	Single color OSRAM LED
Operating temperature	-20°C~40°C
Power Cable	H05RN-F 2X1.0mm ² L=0.5m (low voltage) H05RN-F 3X1.0mm ² L=0.5m (high voltage)
Mounting sleeve	Powder Coated Aluminum 137# 138#
Dimmable Support	Triac PWM 1-10V Dali



LED Colour Temperature

- 2000K
- 4000K
- 6000K

Optics



B32
L0120F024PS 20°
L0125F024PS 25°
L0130F024PS 30°
L0120F024PS 35°

B32



20° 25° 30° 35° 45°

Item	Light source	Lens	Length L=(mm)	The manufacturer selected lens degree(°)θ1/2	Input voltage(V)	Typical operating current(mA)	Typical consumption(W)	Typical luminance(lm)	IK rate
GKB2RLB1257	12×1.5W Single color	B32	549mm	20°	24V DC 120/240	2 4 V = 910 120V = 143 240V = 79	2 4 V = 22.0 120V = 17.0 240V = 17.5	Cool white =1108 Warm white =1020	07
GKB2RLB2457	24×1.5W Single color	B32	1025mm	20°	24V DC 120/240	2 4 V = 1826 120V = 312 240V = 156	2 4 V = 44.0 120V = 36.0 240V = 36.4	Cool white =2198 Warm white =2055	07

