

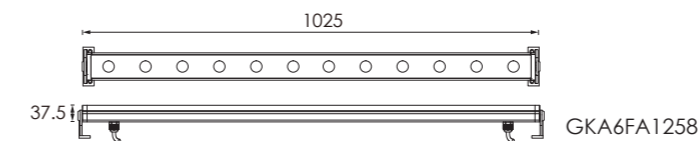
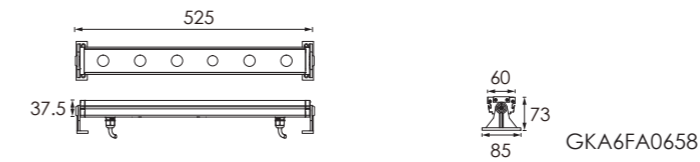
Wall Washer High Lumen 38

High Luminance LED Linear Wall Washer

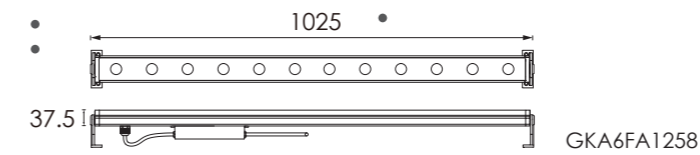
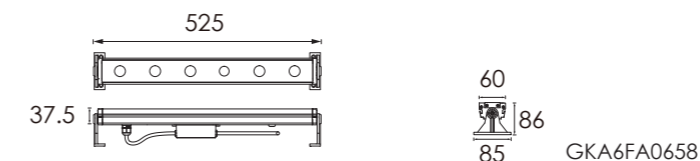


Outer Dimensions Unit:mm

Low voltage input (24VDC)



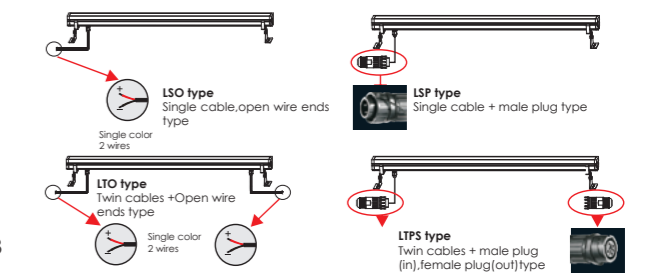
High voltage input (100V-240V)



Material specifications

Housing	Extruded aluminum,poder coated
Lens	Optical lens, efficiency≥85%
Light Window	Tempered glass,T=3mm
Cable gland	IP68 PG-13.5 PA66
Gasket	Glass and housing are silicone sealed
LED	NICHIA SMD 3535
Operating temperature	-20°C~40°C
Bracket	12# Die-casting powder coated aluminum
Power Cable	H07RN-F 2X1.5mm ² L=0.25m (low voltage) H05RN-F 3X1.0mm ² L=0.6m (high voltage)
Dimmable support	Triac PWM 1-10V Dali

Low voltage input (24VDC) power cord model



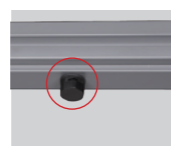
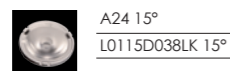
High voltage input (100V-240V) power cord wiring model



LED Colour Temperature

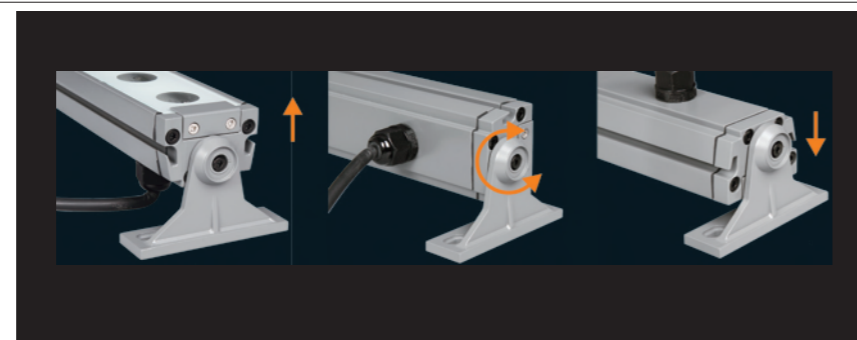
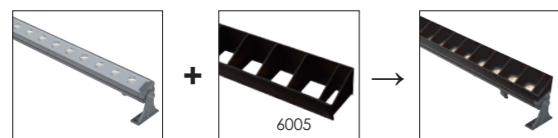
- 3000K
- 4000K
- 6000K

Optics



Air Valve

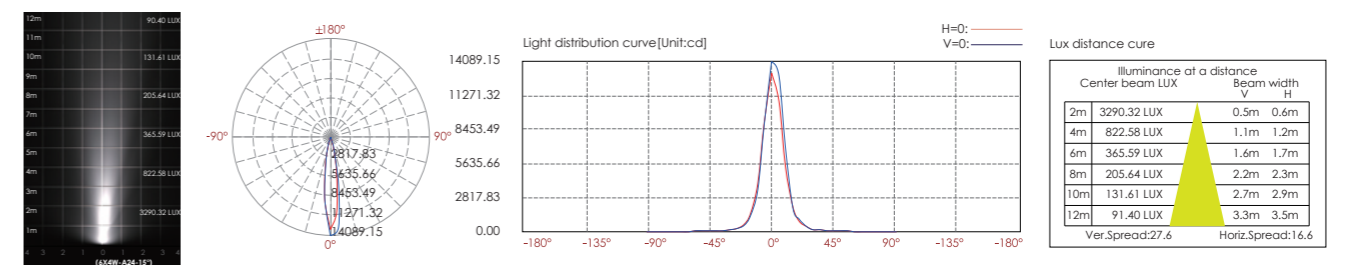
Optional Honeycomb Louver



Adjustable beam direction

Item	Light source	Lens	The manufacturer selected lens degree(°)θ1/2	Length L=(mm)	Input voltage(V)	Typical operating current(mA)	Typical consumption(W)	Typical luminance(lm)	IK rate
GKA6FA0658	6X4W Nichia	A24	15°	525	24V DC 120/240	24V = 1200 120V = 222 240V = 114	24V = 28.8 120V = 26 240V = 26.1	Cool white 1930 Warm white 1583	05
GKA6FA1258	12X4W Nichia	A24	15°	1025	24V DC 120/240	24V = 2380 120V = 425 240V = 215	24V = 57.6 120V = 50 240V = 51	Cool white 4417 Warm white 3622	05

GKA6FA0658



GKA6FA1258

