

Bright Circle S Series



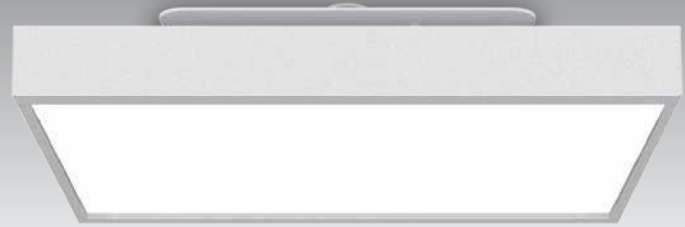
- Ceiling mounted, suspended.
- Colours: black / white.
- Application: offices, hotels, households, public area, hallway etc.
- Warranty: Residential 3 Yrs / Commercial 5 Yrs.

Bright Circle S Series



SPECIAL FEATURES

- Unique combination of distinguished look & feel and performance.
- Easy installation with light-weight and ultra thin design.



Bright Circle S Series

Ceiling / Wall Mounted

Specification

GENERAL

surface /wall

IP 20

LED

100lm/w

2700-6500K

CRI >80Ra/90Ra

SDCM≤3

ESTIMATED LED LIFETIME

L90/50,000h

OPTICAL

direct,direct/indirect

Aluminum + PMMA

microprismatic (UGR<19)

beam angle (degree) : 110°

ELECTRICAL

non DIM, DIM DALI,DIM 1-10V, DIM TRAIC

PF>0.9

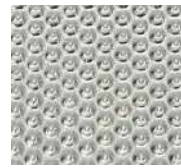
PHYSICAL

powder-coated

MATERIAL COLOUR

black

white



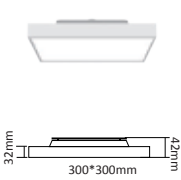
Microprismatic
(UGR <19)



Direct / Indirect
Light Distribution

Bright Circle S Series

Ceiling / Wall Mounted

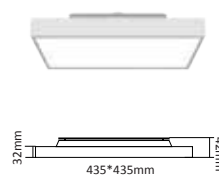


GHBRI-300-SS

DIRECT/INDIRECT



Power	CCT	Luminous flux
15W	2700-6500K	100LM/W
25W	2700-6500K	100LM/W

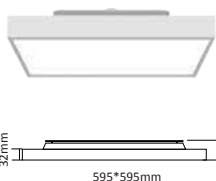


GHBRI-435-SS

DIRECT/INDIRECT



Power	CCT	Luminous flux
30W	2700-6500K	100LM/W
40W	2700-6500K	100LM/W

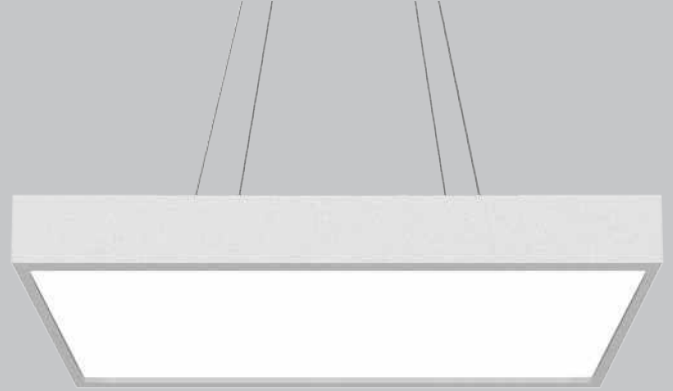


GHBRI-595-SS

DIRECT/INDIRECT



Power	CCT	Luminous flux
40W	2700-6500K	100LM/W
60W	2700-6500K	100LM/W



Bright Circle S Series

Suspended

Specification

GENERAL

suspended cable

IP 20

LED

100lm/w

2700-6500K

CRI >80Ra/90Ra

SDCM≤3

ESTIMATED LED LIFETIME

L90/50,000h

OPTICAL

direct,direct/indirect illumination

Aluminum + PMMA

microprismatic (UGR<19)

beam angle (degree) : 110°

ELECTRICAL

non DIM, DIM DALI,DIM 1-10V, DIM TRAIC

PF>0.9

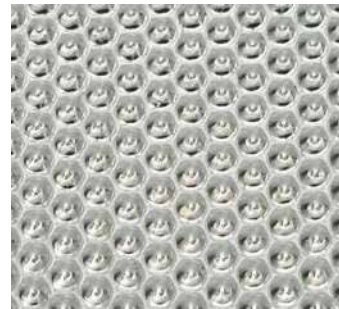
PHYSICAL

powder-coated

MATERIAL COLOUR

black

white



Microprismatic (UGR <19)



Direct / Indirect Light Distribution

Bright Circle S Series

Suspended

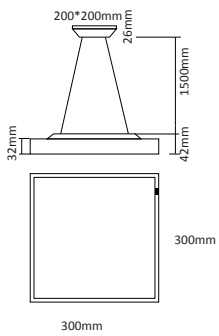


GHBRI-300-SH

DIRECT/INDIRECT



Power	CCT	Luminous flux
15W	2700-6500K	1500
25W	2700-6500K	2500

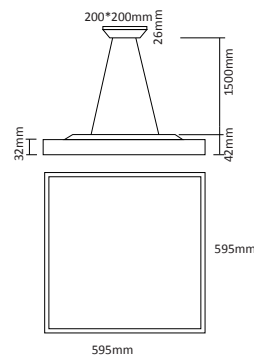


GHBRI-595-SH

DIRECT/INDIRECT



Power	CCT	Luminous flux
40W	2700-6500K	4000
60W	2700-6500K	6000

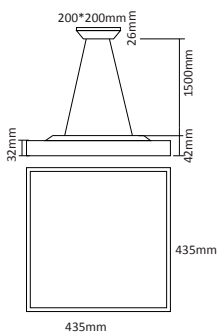


GHBRI-435-SH

DIRECT/INDIRECT



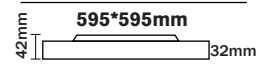
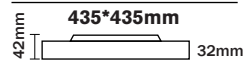
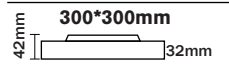
Power	CCT	Luminous flux
30W	2700-6500K	3000
40W	2700-6500K	4000



Bright Circle S Series

Product Range

SIZE



MOUNTING

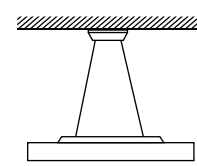
Wall



Surface

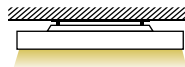


Suspended cable

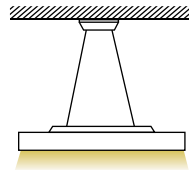


TYPE

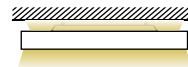
Wall/Surface direct



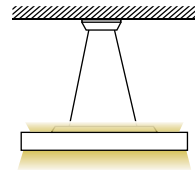
Suspended direct



Wall/Surface direct/ indirect



Suspended direct/ indirect



Bright Circle S Series



Bright Circle S Series

