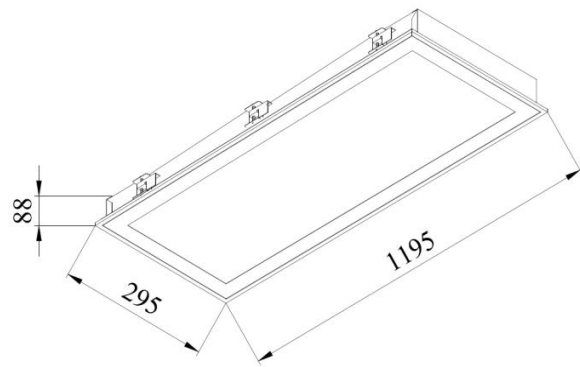


Opal Clean Room LED Panel Light

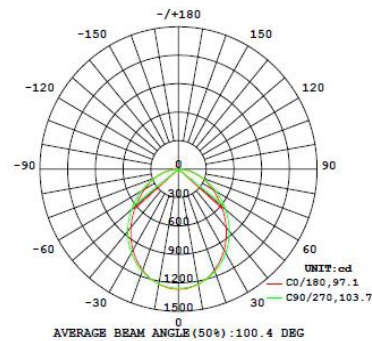


- Recessed luminaire designed for plaster or other sheet ceilings.
- IP44, IP54 & IP65 options dust proof sealed for kitchens, hospitals, clean rooms and food preparation areas.
- Heavy duty neoprene gasket ensures positive seal. Insect proof/splash proof.



Specifications

Colour Range	3000-6000K
Power Consumption	35W / 40W / 45W
Lumen	110lm/W
Dimmable	Triac/0~10V/Dali (option)
Input Voltage	100~240V AC 50/60Hz
Installation	Recessed
Beam angle	100°
Chipsets	SMD 2835 LED
IP Rating	IP44 / IP54 / IP65
PF	>0.95
CRI	>80 / 90 (option)



Dimensions

Product Dimensions (mm)	1195*295*85 (L*H*W)
Cutout (mm)	1180*280
Housing Material	Cold-roll Steel
Diffuser	PMMA Diffuser (opal/reeded/prismatic)



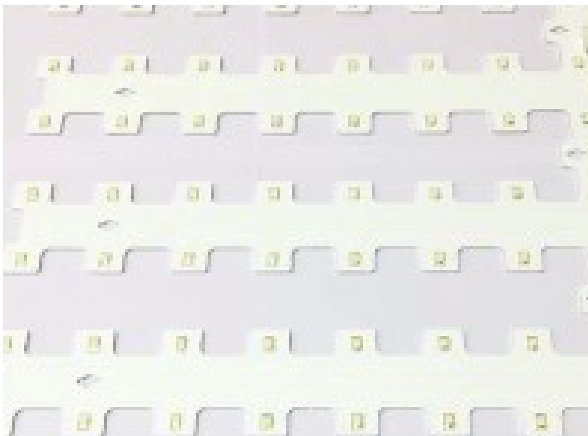
Opal Clean Room LED Panel Light



Sturdy steel body, phosphate and powder coating



Smooth opal diffuser offering uniform light distribution



Large LED board for high lumen output and exceptional performance



Driver: CRI>80 or CRI>90

Model	CCT	LED Type	Lumen (lm)	Power	Dimensions (mm)	Voltage(V)
GCOPA-35W			3850lm	35W		
GCOPA-40W	3000-6000K	SMD 2835	4400lm	40W	1195*295*85	AC100-240V
GCOPA-45W			4950lm	45W		

