

## SD100 Surface Mounted LED Downlight



LM80

5 Yrs  
Warranty



SAA

IP54

TUV

9/331 Ingles Street  
Port Melbourne VIC 3207 Australia

info@greenlux.com.au  
sales@greenlux.com.au

T 1300 650 625  
www.greenlux.com.au



## Introduction

This surface mounted downlight adopts high lumen LED chip and PC lens which make sure the high luminous, SD100A adopts COB chip with four beam angle options: 15°/24°/36°/60°, SD100B adopts SMD chip with 36°/60° beam angle options. 6063 aluminum housing provides excellent thermal dissipation. The installation is very easy, screwless design on surface gives the lamp an IP54 protection level.

## Features

- **Type A:** IP54, COB chip, 15°/24°/36°/60° beam angle options, uniform lighting output.
- **Type B:** IP54, SMD LED chip, 30°/60° beam angle options to reach accent lighting effect.
- Internal driver with triac dimming option.
- Easy installation and maintenance.

## Application Areas

It is widely used in museums, hotel, townhouse, restaurant, etc

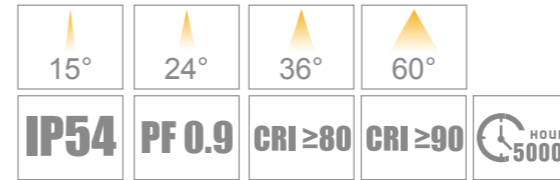




SD100A



SD100B

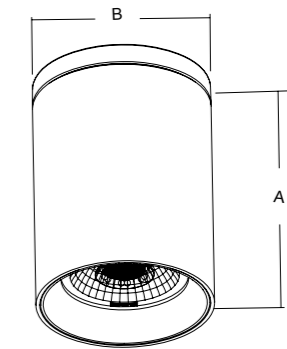


## Technical Data Sheet

Code No.	SD100A-6W	SD100A-10W	SD100B-6W	SD100B-10W		
Dimension(mm)	Ø70xH100mm					
Cutout (mm)	-					
Watt(W)	6W	10W	6W	10W		
Rated Input Voltage(V)	AC230V					
Input Voltage(V)	AC220-240V					
LED Module Input	-					
Light Source	COB		SMD			
SDCM	≤6					
CCT(K)	1-CCT: 2700K/3000K/4000K/5000K					
CCT Selection DIP Switch	NO					
Luminous Flux (lm) ±5%	Non-DIM	1-CCT	548-621	930-1000	583-600	950-1000
		DIM	538-617	950-1000	583-590	960-1000
	Non-DIM	3-CCT	-			
		DIM	-			
CRI	Ra>80 (Ra>90 Optional )					
Beam Angle (°)	15°/24°/36°/60°		36°/60°			
UGR	-					
LED Driver	Built-in					
Dimming Option	Triac					
Sensor	NO					
Emergency Kits	NO					
Electrical Class	Class I					
Ingress Protection (IP Rating)	IP54					
Impact Resistance (IK Rating)	-					
Product Finishing(Base)	White RAL 9016 / Black RAL 9005					
Materials of Optics	PC					
Materials of Housing	Aluminum+PC / PMMA					
Lifetime (hr)	50,000h					
Glow wire test (°C)	850°C					
Operating Temp. (°C)	-20°C ~40°C					
Storage Temp. (°C)	-20°C ~65°C					
Installation	Surface mount					

## Measurement

Code	Dimension(mm)		Size(mm)	Product Weight (Kg)	
	A	B		N.W/PC	G.W/PC
SD100A-6W	100	70	100xØ70	0.32	0.32
SD100B-6W	100	70	100xØ70	0.32	0.32
SD100A-10W	100	70	100xØ70	0.32	0.32
SD100B-10W	100	70	100xØ70	0.32	0.32

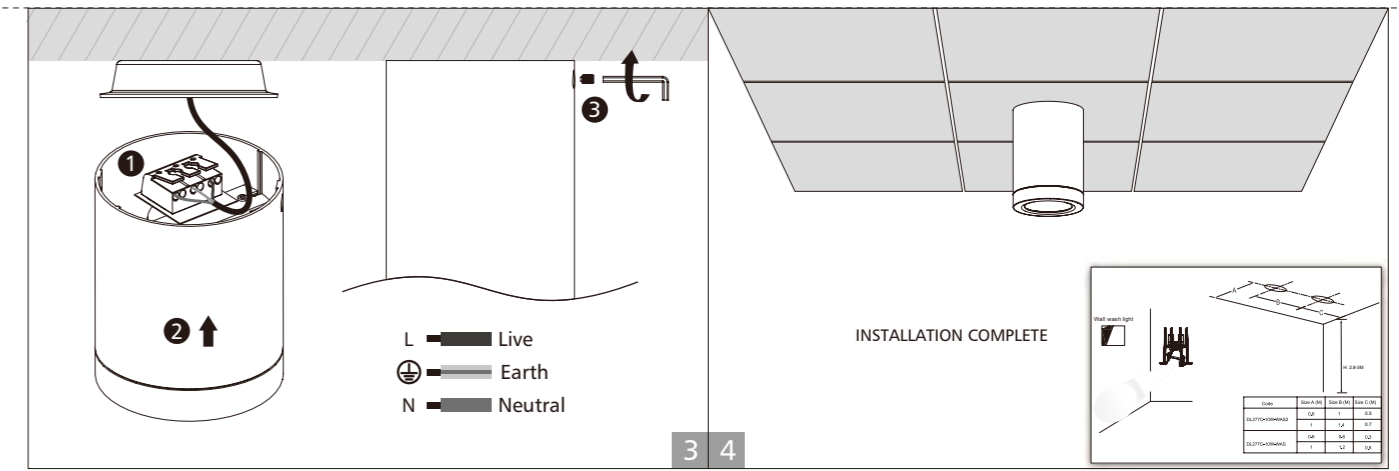


## Driver Datasheet (Non-dimmable )

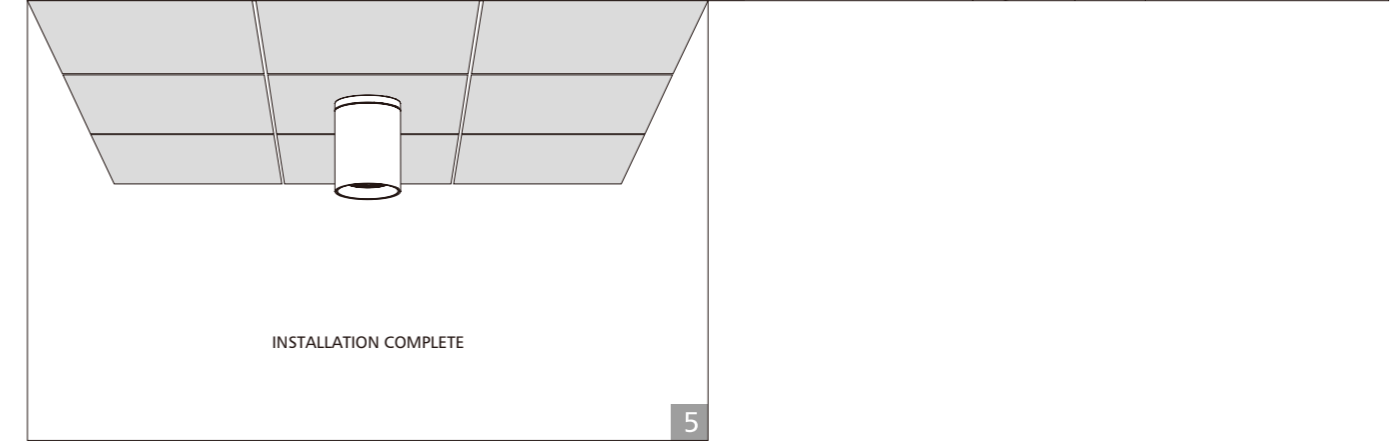
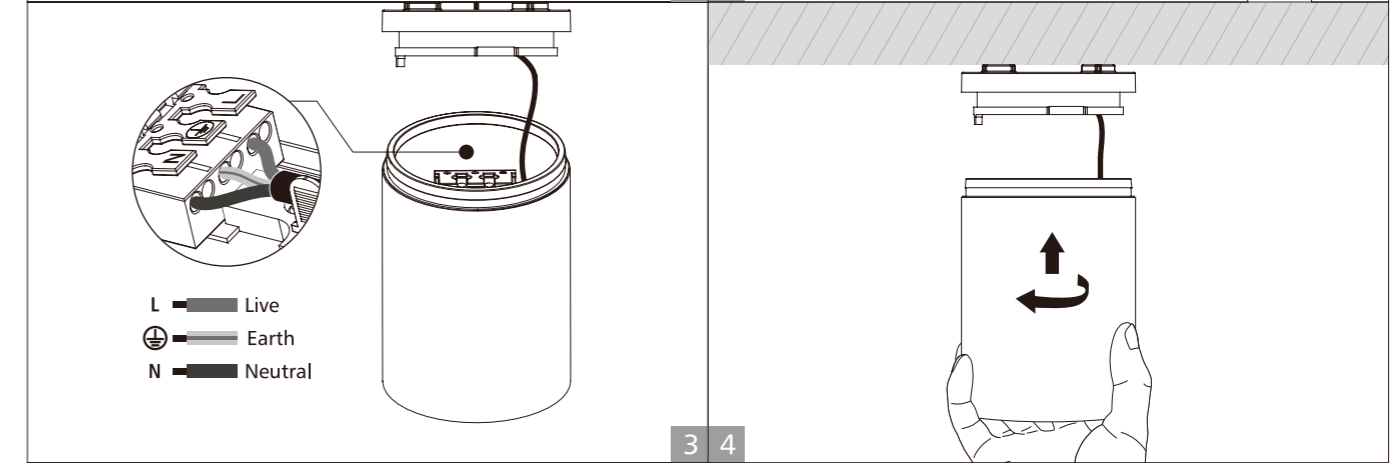
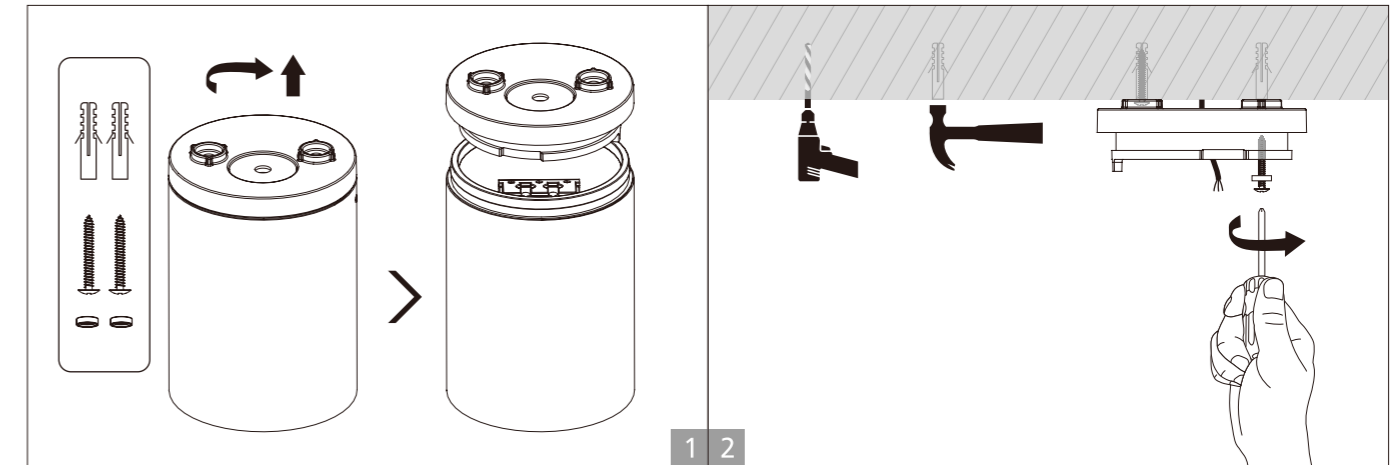
Total load wattage		6W	10W
Output	Output Voltage range	DC30-40V	DC30-40V
	Rated output current	140mA	230mA
	Line Regulation	±5%	
	Setup, Rise Time	<0.5S	
Flickering Index		1%,IEEE1789 NO RISK	
Input	Input Voltage	AC180-265V	
	Rated Input Voltage(V)	AC200-240V	
	Frequency	50/60Hz	
	Input Current	≤0.04A	≤0.07A
	Rated Input Current	≤0.04A	≤0.06A
	Power Factor	PF > 0.9	
	THD	<20%@230V	<20%
	Efficiency	≥80%	
No load wattage		<1W	
Protection	Short circuit protection	PASS	
	Over voltage protection	PASS	
	Over temperature protection	PASS	
Safety &EMC	Withstand voltage	I/P-FG:1.5KVac, <5mA 60S	I/P-FG:1.5KVac, <5mA 60S; I/P:3.75KVac,
	Isolation Resistance	/	
	Surge	IEC/EN61000-4-5( P<25W; L-N:500V, L/N-PE:1KV);	
	EMC Emission	EN55015, EN61000-3-2	
EMC Immunity		EN61000-4-2,3,4,5,6,8,11; EN61547	

# Driver Datasheet (Triac Dimmable )

Total load wattage		6W	10W	
Output	Output Voltage range	DC30-40V		
	Rated output current	130mA	220mA	
	Line Regulation	±5%		
	Setup, Rise Time	≤1S		
	Flickering Index	5.5%(LOW RISK)	<10%	
Input	Input Voltage	200-240V		
	Rated Input Voltage(V)	230V		
	Frequency	50Hz		
	Input Current	≤0.04A	≤0.06A	
	Rated Input Current	≤0.03A	≤0.05A	
	Power Factor	0.9		
	THD	-		
	Efficiency	≥78%		
	No load wattage	<1W		
	Protection	Short circuit protection	Pass	
		Over voltage protection	Pass	
Over temperature protection		Pass		
Safety &EMC	Withstand voltage	I/P-FG:1.6kVac,<5mA 60S; O/P-FG:0.5kVac,<5mA 60S		
	Isolation Resistance	I/P-O/P: 500VDC, ≥100M Ω		
	Surge	EC/EN61000-4-5( P<25W; L-N:500V, L/N-PE:1KV);		
	EMC Emission	EN55015, EN61000-3-2		
	EMC Immunity	EN61000-4-2,3,4,5,6,8,11; EN61547		



## Installation Guide - Rotating Surface Mounted



## Installation Procedure

**WARNING** ⚡

1. Switch off power supply before installation / maintenance.
2. Switch on after completing installation and examination of the circuit.
3. The downlight must be installed and maintained by professional electrician.

Turn Off Power Supply

## Installation Guide - Screw-fixing Surface Mounted

