

TL96 Series LED Track Light



LM80

5 Yrs
Warranty



SAA

IP20

TUV

9/331 Ingles Street
Port Melbourne VIC 3207 Australia

info@greenlux.com.au
sales@greenlux.com.au

T 1300 650 625
www.greenlux.com.au



Introduction

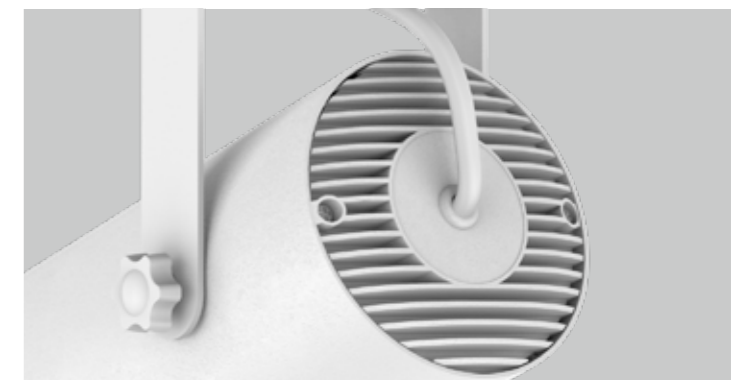
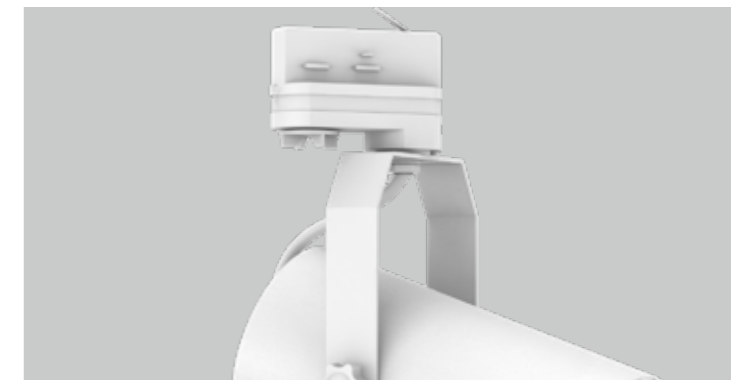
The LED track light with adjustable focus design, special lens can have a fast beam angle change (just press the lens). Adopt high lumen Citizen light source, two bracket design options, changeable lighting orientation with 350° in horizontal direction and 300° in vertical direction. Aluminum heat sink provides excellent heat dissipation. Easy installation, recreational for various application.

Features

- Adjustable focus lens 20°~36°, 36°~60°.
- Brand LED light source Citizen COB.
- High lumen efficiency 115lm/W.
- Finish color: White/Black.
- Internal flicker free driver.

Application Areas

It is suitable for supermarket, specialty store, show window, exhibition hall; focus lighting, decorative and background lighting, where attention is focused on subjects to emphasise special visual points

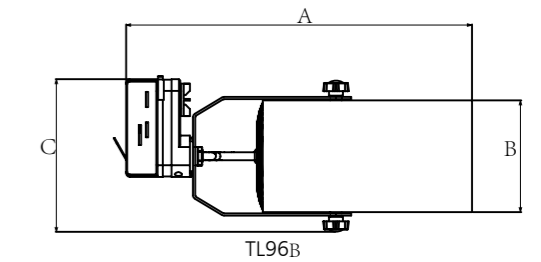
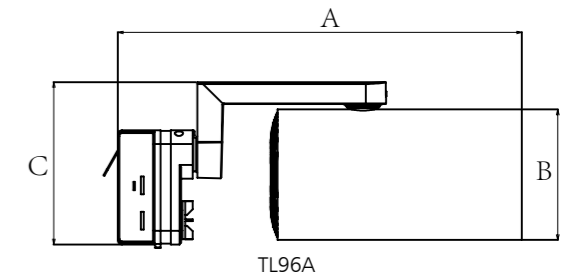
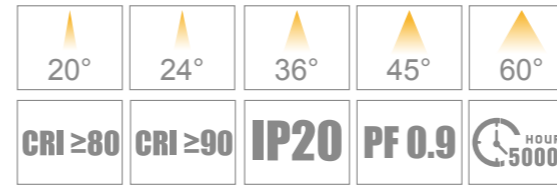




TL96A



TL96B



Technical Data Sheet

Code No.	GUTL96-25W-A	GUTL96-25W-B	GUTL96-35W-A	GUTL96-35W-B
Dimension(mm)	Ø96*298			
Cutout (mm)	-			
Watt(W)	25W		35W	
Rated Input Voltage(V)	AC230V			
Input Voltage(V)	AC200-240V			
LED Module Input	-			
Light Source	COB			
SDCM	<6			
CCT(K)	1-CCT: 2700K/3000K/4000K/5000K			
CCT Selection DIP Switch	NO			
Luminous Flux (lm) ±5%	Non-DIM	1-CCT	2800~2950Lm	3750~3950Lm
		DIM	2550~2700Lm	3400~3600Lm
	Non-DIM	3-CCT	-	-
		DIM	-	-
CRI	80 (/90 /97 Optional)			
Beam Angle (°)	20°/24°/36°		36°/45°/60°	
UGR	-			
LED Driver	Built-in			
Dimming Option	YES			
Sensor	NO			
Emergency Kits	NO			
Electrical Class	Class I			
Ingress Protection (IP Rating)	IP20			
Impact Resistance (IK Rating)	6			
Product Finishing(Base)	White RAL 9016/Black RAL9005			
Materials of Optics	PMMA			
Materials of Housing	PC/Aluminium			
Lifetime (hr)	50000h			
Glow wire test (°C)	650°C			
Operating Temp. (°C)	-20°C ~40°C			
Storage Temp. (°C)	-20°C ~65°C			
Installation	Track			

Measurement

Code	Dimension(mm)			Size(mm)	Product Weight (Kg)	
	A	B	C		N.W/PC	G.W/PC
GUTL96-25W-A	298	Ø96	120	Ø96*298	1.2	1.3
GUTL96-35W-A	298	Ø96	120	Ø96*298	1.2	1.3
GUTL96-25W-B	298	Ø96	132	Ø96*298	1.2	1.3
GUTL96-35W-B	298	Ø96	132	Ø96*298	1.2	1.3

Driver Datasheet (Non-Dimmable)

Total load wattage		25W	35W
Output	Output Voltage range	30-40V	
	Rated output current	600mA	860mA
	Line Regulation	±5%	
	Setup, Rise Time	<0.5S	
	Flickering Index	<10%	
Input	Input Voltage	180-265VAC	
	Rated Input Voltage(V)	200-240VAC	
	Frequency	50/60Hz	
	Input Current	0.16A	0.22A
	Rated Input Current	0.14A	0.20A
	Power Factor	0.9	
	THD	<20% @230V	
	Efficiency	≥85%	≥87%
	No load wattage	<0.5W	
Protection	Short circuit protection	Pass	
	Over voltage protection	Pass	
	Over temperature protection	Pass	
Safety & EMC	Withstand voltage	I/P-O/P:3.75KVac, <5mA 60S	
	Isolation Resistance	I/P-O/P: 500VDC, ≥100M Ω	
	Surge	IEC/EN61000-4-5(P<25W; L-N:500V, L/N-PE:1KV); IEC/EN61000-4-5 (P≥25w L-N:1KV, L/N-PE:2KV)	
	EMC Emission	EN55015, EN61000-3-2	
EMC Immunity	EN61000-4-2,3,4,5,6,8,11; EN61547		

Driver Datasheet (Triac Dimmable)

Total load wattage		25W	35W
Output	Output Voltage range	DC30-40V	
	Rated output current	580mA	800mA
	Line Regulation	±5%	
	Setup, Rise Time	<0.5S	
	Flickering Index	<10%	
Input	Input Voltage	AC200-240V	
	Rated Input Voltage(V)	AC230V	
	Frequency	50Hz	
	Input Current	0.14A	0.2A
	Rated Input Current	0.13A	0.17A
	Power Factor	0.9	
	THD	<20% @230V	
	Efficiency	≥84%	≥85%
	No load wattage	<1W	
	Protection	Short circuit protection	Pass
Over voltage protection		Pass	
Over temperature protection		Pass	
Safety & EMC	Withstand voltage	I/P-O/P:3.75KVac, <5mA 60S	
	Isolation Resistance	I/P-O/P: 500VDC, ≥100M Ω	
	Surge	IEC/EN61000-4-5 (P<25W; L-N:500V, L/N-PE:1KV); IEC/EN61000-4-5 (P≥25w L-N:1KV, L/N-PE:2KV)	
	EMC Emission	EN55015, EN61000-3-2	
	EMC Immunity	EN61000-4-2,3,4,5,6,8,11; EN61547	

Installation Procedure

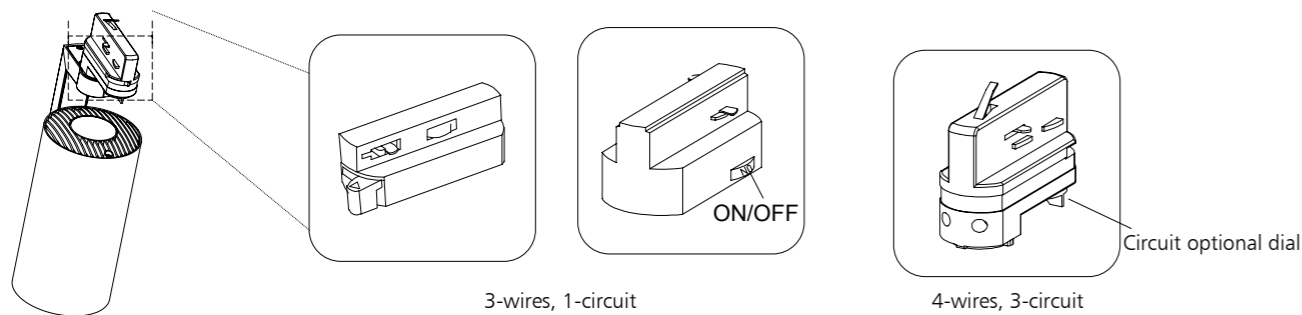
WARNING

1. Switch off power supply before installation / maintenance.
2. Switch on after completing installation and examination of the circuit.
3. The track light must be installed and maintained by professional electrician.



Turn off power supply before installation. Read instructions and make sure you have all the tools and accessories before installation.

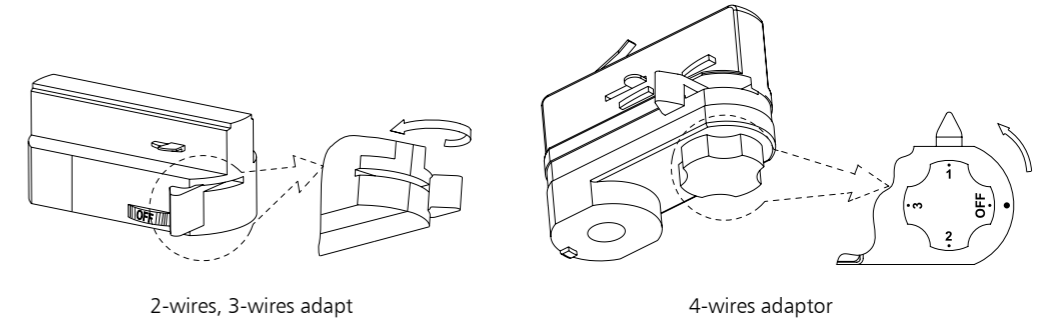
Adaptor Selection Guide



Installation Guide

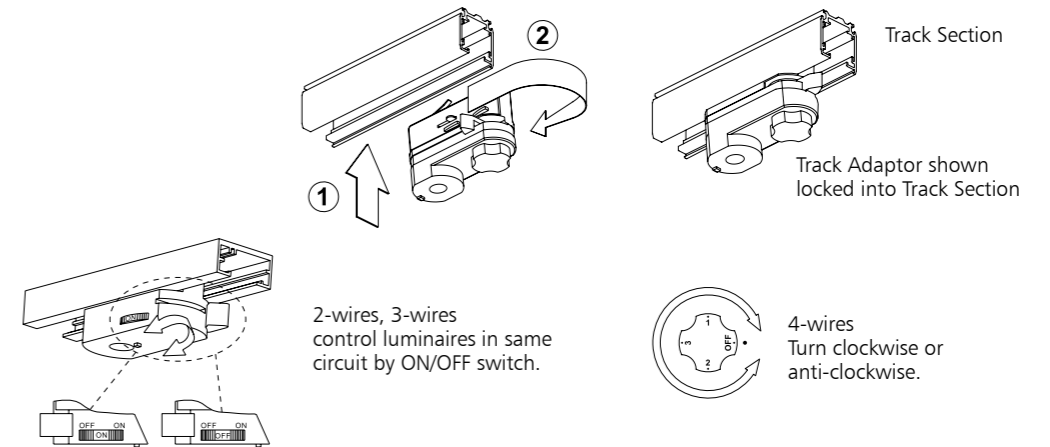
Step 1

Before locating Adaptor into Track Section, make sure it is set in the 'OFF' position & 'Locking Lever' is set in the position as shown below.

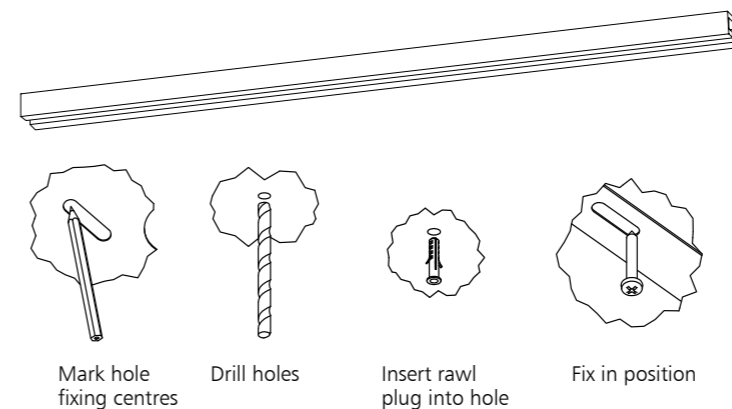


Step 2

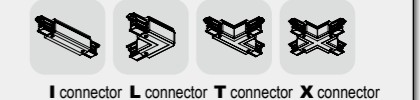
Locate Track Adaptor into Track Section (1) & lock into position by turning 'Locking Lever' 90°(2)



Track Installation: CEILING MOUNTED



Below connector of track available, please contact with sales.



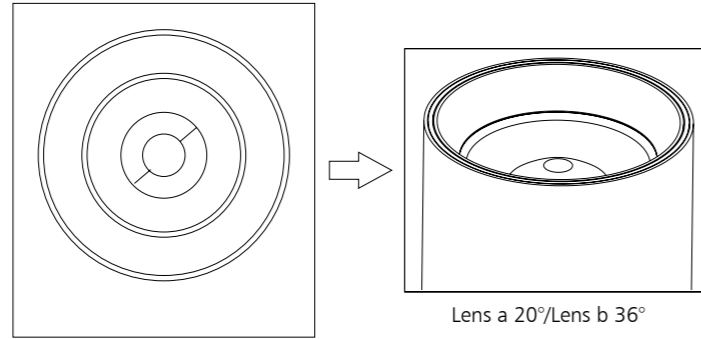
Note: Do not install in the place near heat source, or in corrosive gas environment.

Lamp Angle Operation Guide

Lens a: (20°/24°/36°)
Lens b: (36°/45°/60°)

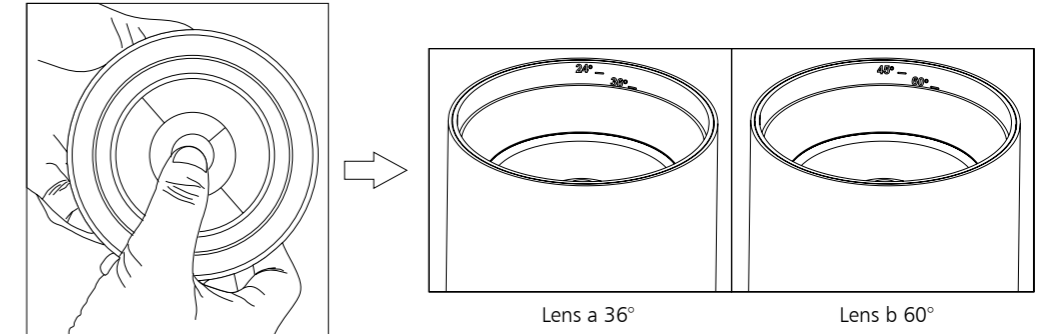
Step 1

By default, the front side is flat, at the moment the beam angle is :
Lens a 20°/Lens b 36°.



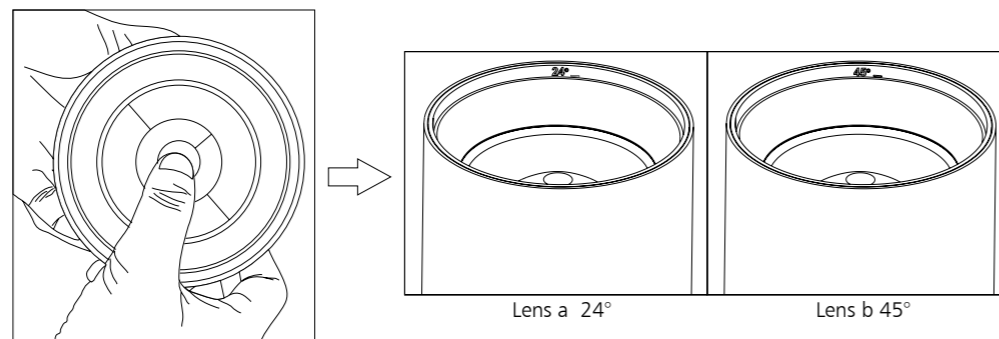
Step 3

Press the lens again, at the moment the beam angle is:
Lens a 36°/Lens b 60°.



Step 2

As the picture shown, press the lens in the first time, at the moment the beam angle is : Lens a 24°/Lens b 45°.



Step 4

Keep pressing for the third time, the lens will go back to be a flat status, beam angle will also go back by default status.

