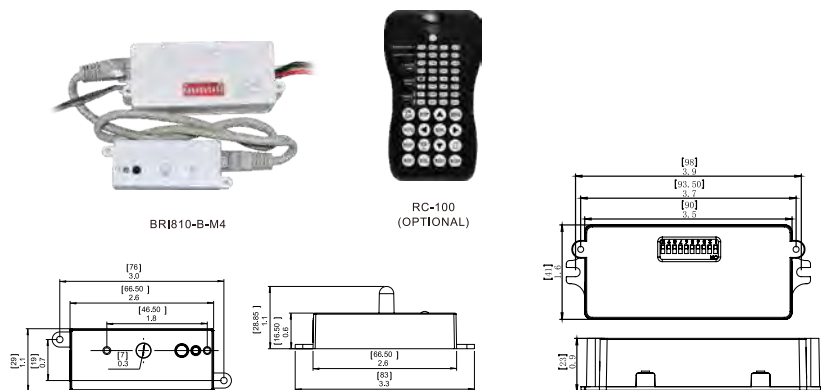


Line Voltage Microwave Bi-level Sensor BRI810-B-M4 instruction

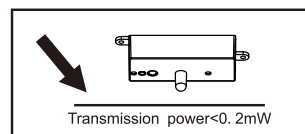
Line Voltage Microwave Bi-level Sensor BRI810-B-M4 instruction



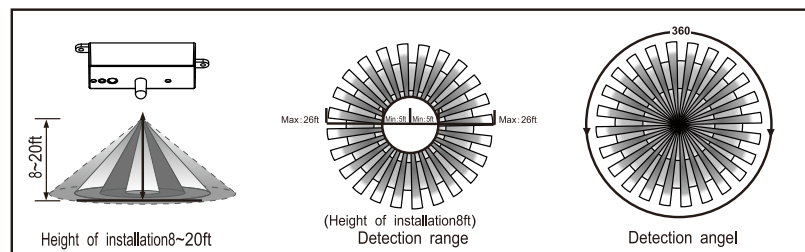
SPECIFICATIONS

Power supply	120/277VAC 50/60Hz
Maximum load @ -40°F ~ +158°F (-40°C ~ +70°C)	Resistive/Tungsten - 600W@120V Ballast Electronic (LED) - 800VA@120V/1200VA@277V
HF System	5.8GHz CW
Dim control output	0-10V, max. 25mA sinking current
Detection radius/angle	Max 26ft. (8m) /360°
Mounting height	Max 20ft
Humidity	Max. 95% RH
Temperature	-40°F ~ +158°F (-40°C ~ +70°C)

NOTE: The high-frequency output of this sensor is <math><0.2\text{mW}</math> that is just one 5000th of the transmission power of a mobile phone or the output of a microwave oven.



SENSOR COVERAGE



Once powering the device up, the BRI810-B-M4 will use factory default parameters to operate.

WARNING

NOTE: Warm up time is 15seconds. After the sensor connects input power first time, the light will keep on 15seconds, then go to dimming to work normally.

NOTE: Factory Default Setting: 100% sensitivity, Hold on time: 10seconds, Daylight sensor is 30lux, Dimming level: 30%, Dimming time: 60minutes.

NOTE: Any setting changed by DIP Switch or remote control, the led light that sensor connect will on/off as confirm.

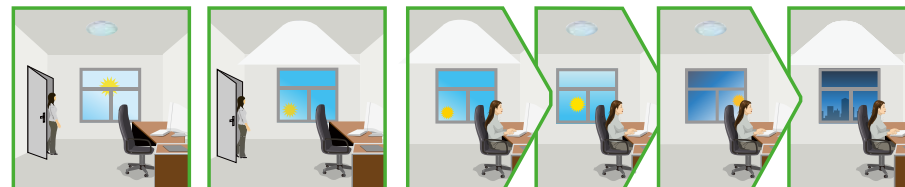
UTILIZING FIELD AND INTRODUCTION

BRI810-B-M4 is a moving object sensor that can detect range of 360° and it's working frequency is 5.8GHz. The advantage of this product is stable working state (stable working temperature: -40°C~+70°C), BRI810-B-M4 adopts a microwave sensor (high-frequency output <math><0.2\text{mW}</math>), so that it is safe and performs better than infrared sensor.

FUNCTION AND OPTIONS

The microwave sensor to achieve tri-level dimming control, for same areas that require a light change notice before switch off.

It offers 3 levels of the light Control : 100%--dimming light (0,10%,30%,50%)--off; and 2 periods of selectable waiting time: motion hold-time and stand-by time. Selectable daylight threshold and choice of detection area.



The light will not switch on when natural light is sufficient, even there is motion detected.

The light switches on automatically with presence when natural light is insufficient.

The light turns on at full or dims to maintain the lux level. The light output regulates according to the level of natural light available.



The light dims to stand-by period after hold-time and stays on selected minimum dimming level.

The light switches off completely after the stand-by period.

PARAMETER SETTING BY DIP SWITCH

Consider the picture: 1, 2 set sensitivity; 3, 4 set hold time; 5, 6 set the lux; 7, 8 stand-by light level; 9, 10 set stand-by time;

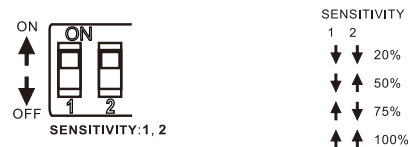
Line Voltage Microwave Bi-level Sensor BRI810-B-M4 instruction

Line Voltage Microwave Bi-level Sensor BRI810-B-M4 instruction



Detection Range Setting (sensitivity)

Detection range is the term used to describe the radii of the more or less circular detection zone produced on the ground after mounting the sensor light at a height of 8-20ft, pull switch to the ON position as "↑", pull switch to the OFF position as "↓", switch location and detection range of the corresponding table is as follows:



Hold Time Setting

The light can be set to stay ON for any period of time between approx. 10sec and a maximum of 15min. Any movement detected before this time elapse will re-start the timer. It is recommended to select the shortest time for adjusting the detection zone and for performing the walk test. Pull switch to the ON position as "↑", pull switch to the OFF position as "↓", switch location and hold time of the corresponding table is as follows:



Light-control Setting

The chosen light response threshold can be infinitely from approx. 10-50lux, pull switch to the ON position as "↑", pull switch to the OFF position as "↓", switch location and light-control of the corresponding table is as follows:



Stand-by Light Level Setting

Switch to the on is "↑", switch to the off is "↓"; The corresponding file of switch location and Stand-by Level as follow:

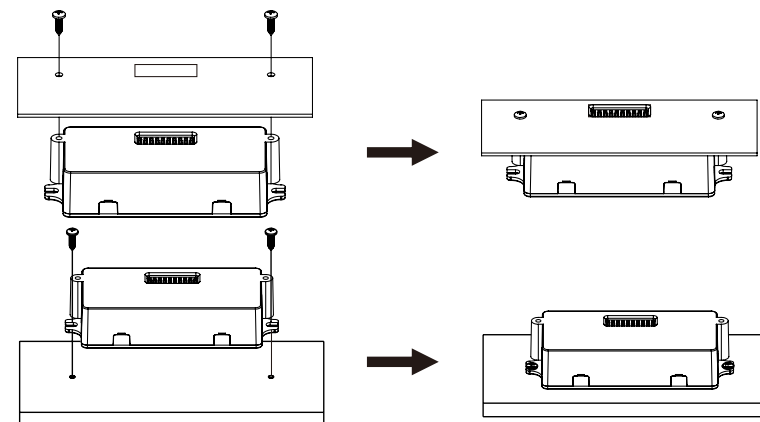


Stand-by Time Setting

Switch to the on is "↑", switch to the off is "↓"; File of switch location and stand-by time setting as follow:

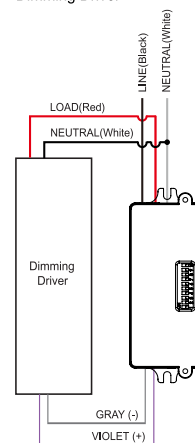
PARAMETER SETTING BY REMOTE CONTROL IN MANUAL OF RC-100.

INSTALLATION



WIRING DIAGRAMS

Wiring with dimming ballast or LED driver.
Dimming Driver



Wiring with non-dimming ballast or LED driver.
Non-Dimming Driver

