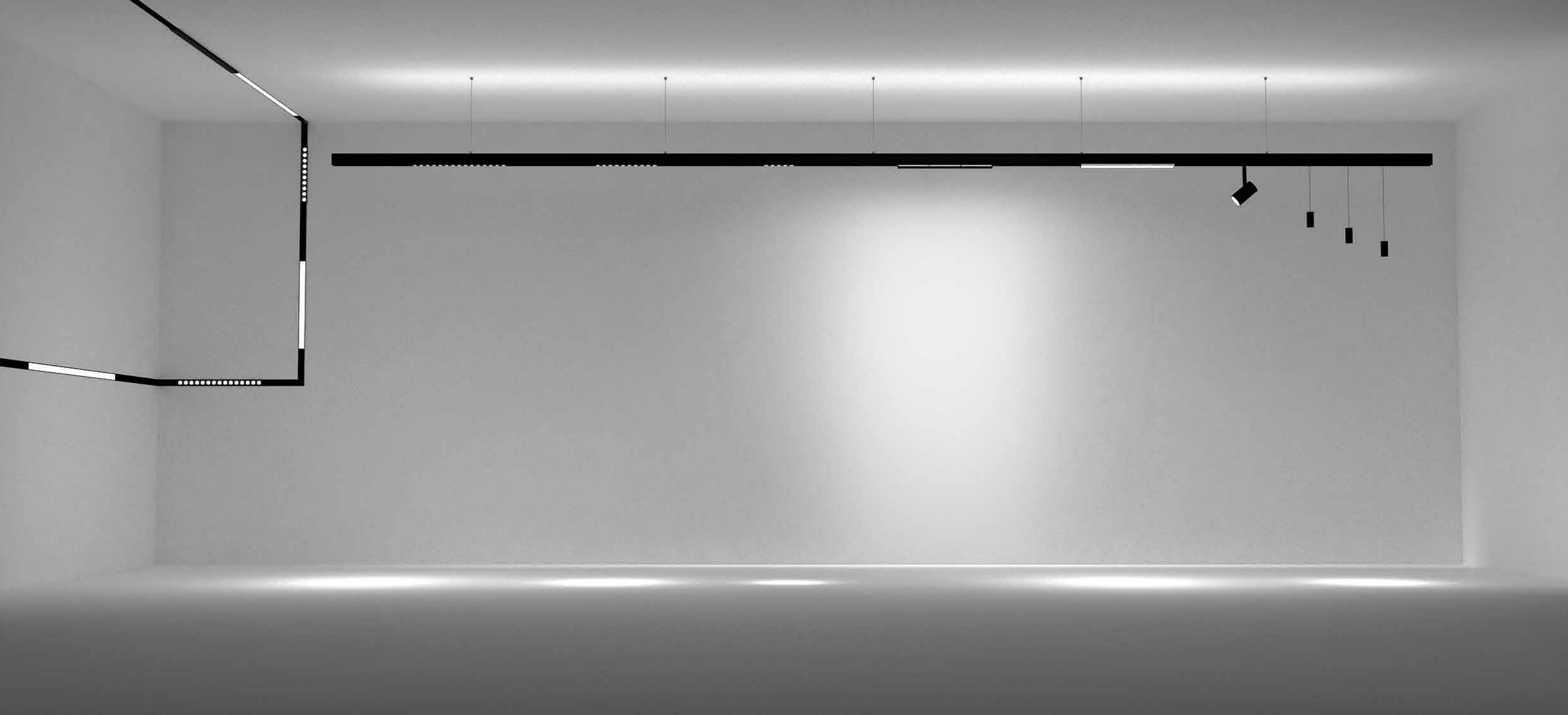




Chain GCTL40

Track Lighting System

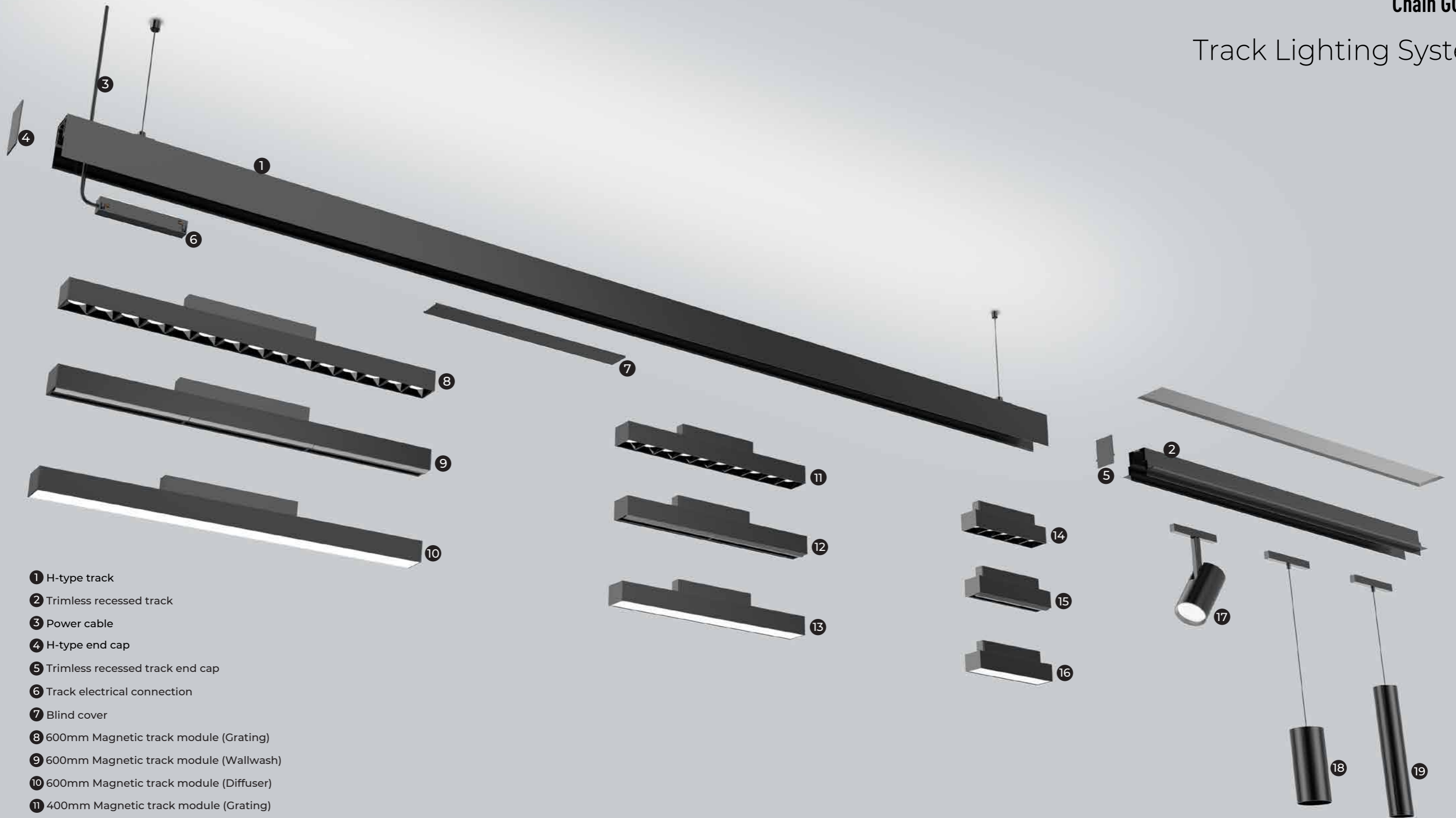


GCTL40 track lighting system is available in version of suspended, surface-mounted and recessed. The suspended light has both downward version and up/down. The track system also offers the option of different linear modules include diffuser, wallwash, in addition, spotlight and downlight. These modules can be combined freely for different applications; it can also creatively matched to achieve various rich styling. The track system is operated with 48VDC, 40mm diameter, and Bluetooth Mesh control system is available.

Track Lighting System

Chain GCTL40

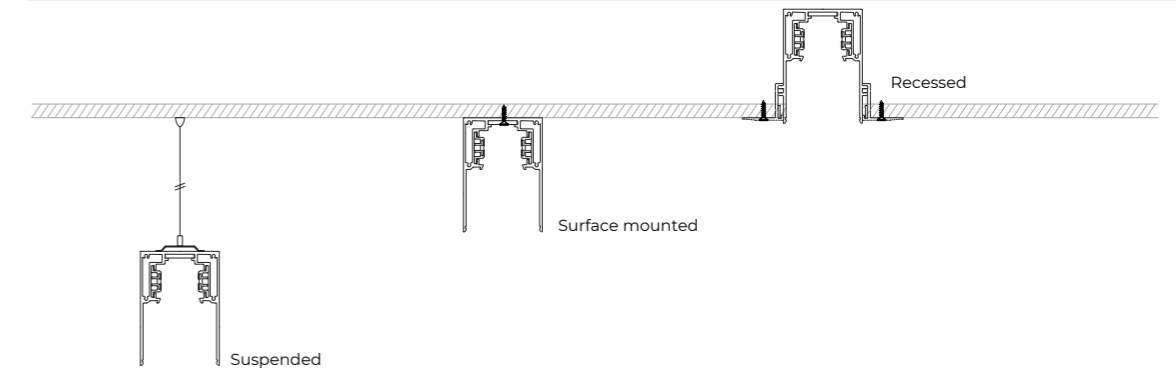
Track Lighting System



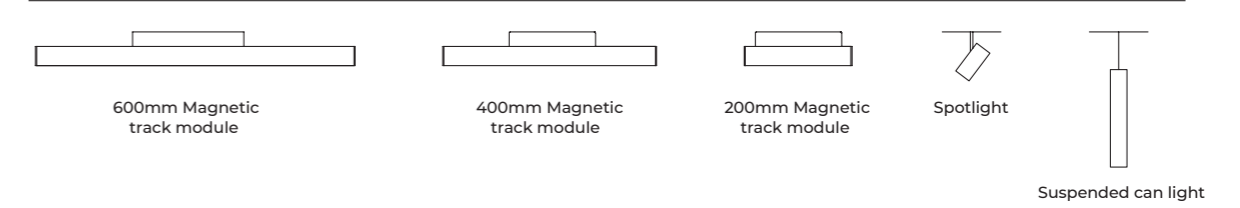
- ① H-type track
- ② Trimless recessed track
- ③ Power cable
- ④ H-type end cap
- ⑤ Trimless recessed track end cap
- ⑥ Track electrical connection
- ⑦ Blind cover
- ⑧ 600mm Magnetic track module (Grating)
- ⑨ 600mm Magnetic track module (Wallwash)
- ⑩ 600mm Magnetic track module (Diffuser)
- ⑪ 400mm Magnetic track module (Grating)
- ⑫ 400mm Magnetic track module (Wallwash)
- ⑬ 400mm Magnetic track module (Diffuser)
- ⑭ 200mm Magnetic track module (Grating)
- ⑮ 200mm Magnetic track module (Wallwash)
- ⑯ 200mm Magnetic track module (Diffuser)
- ⑰ Spotlight module
- ⑱ Magnetic suspended can light

LED LINEAR LIGHTING SOLUTION PROVIDER

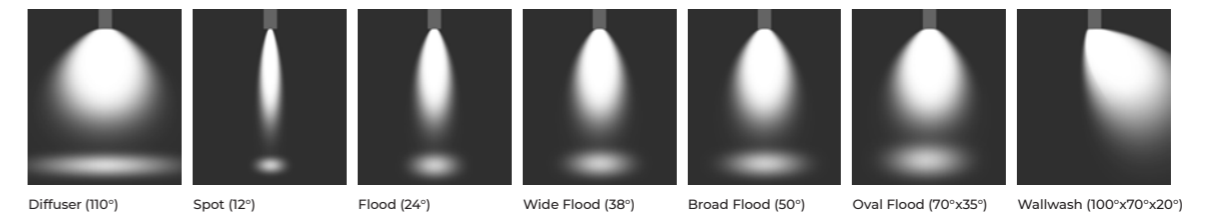
Installation



Magnetic module



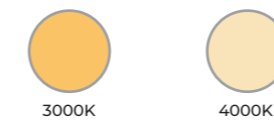
Optics



Finishes



CCT



Dimming

ON/OFF Bluetooth Mesh

Certifications



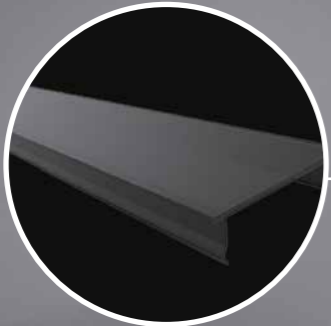
Modular Solution



Grating module



Diffuser module



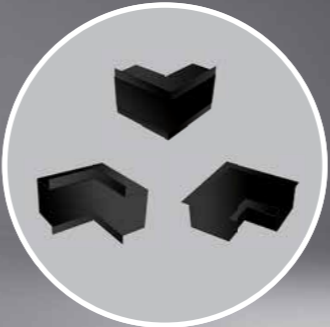
Blind cover



Up/down lighting H Track

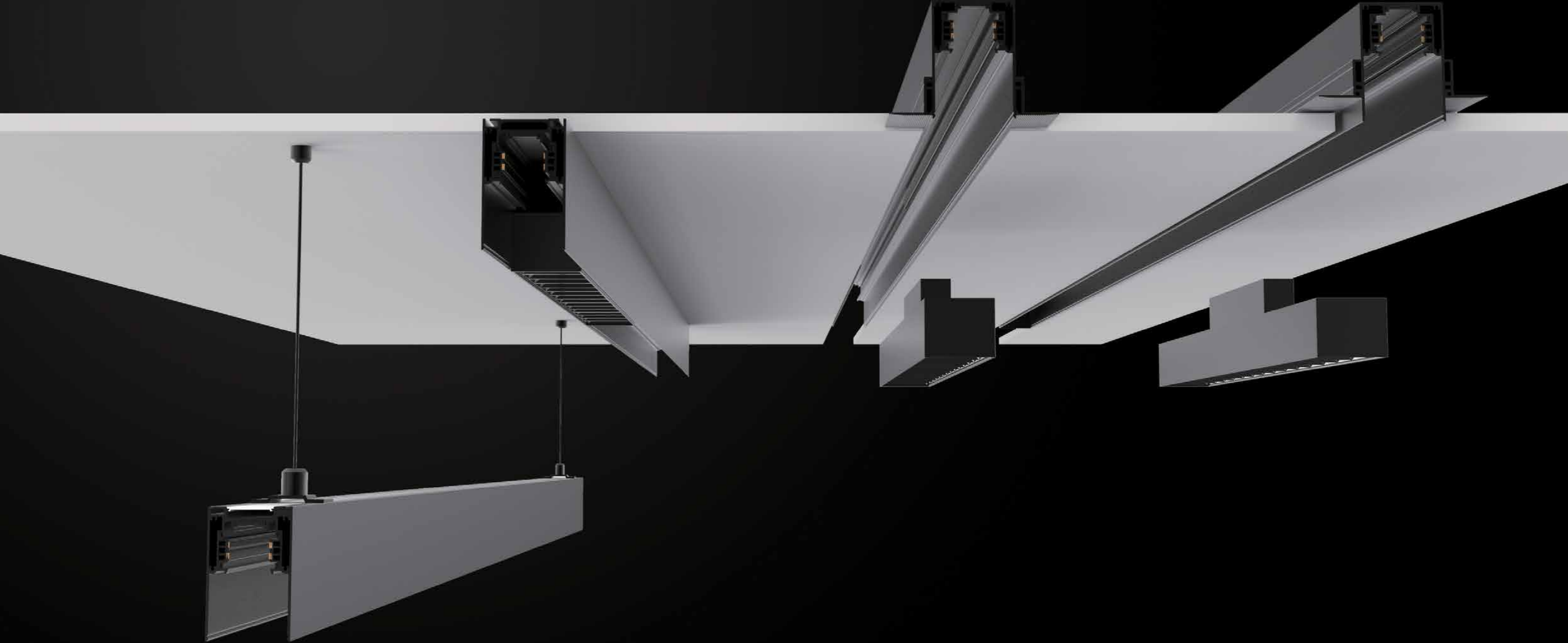


Wallwash module



Connector

Installation Instruction



Features

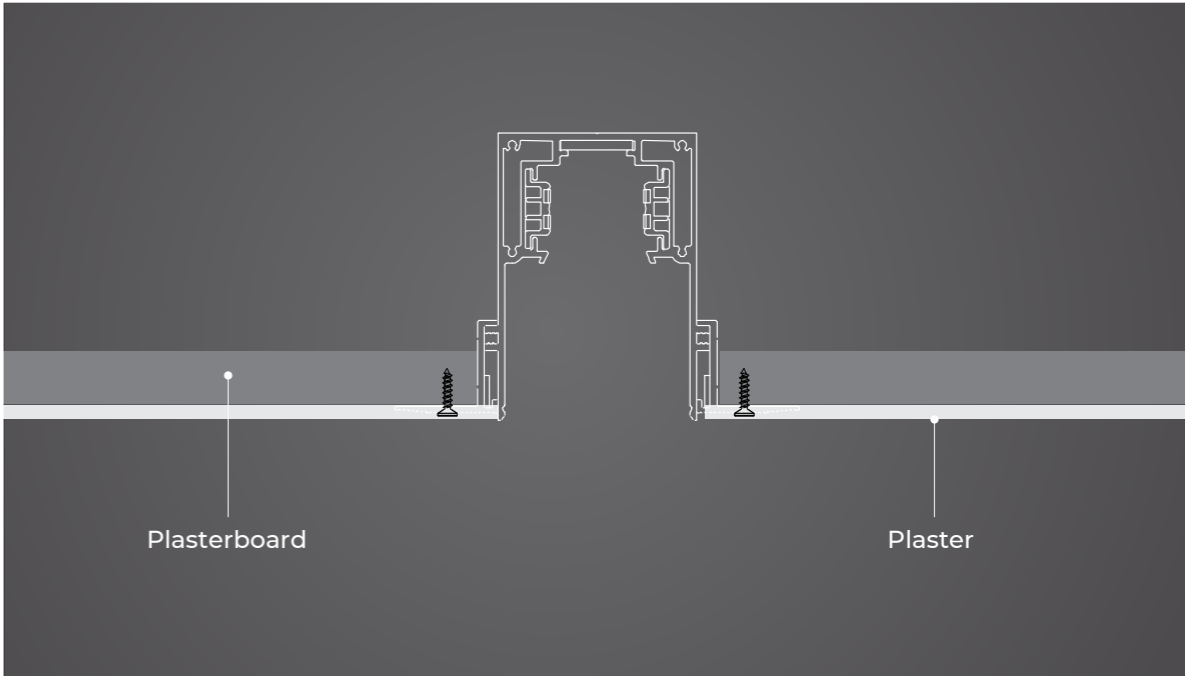
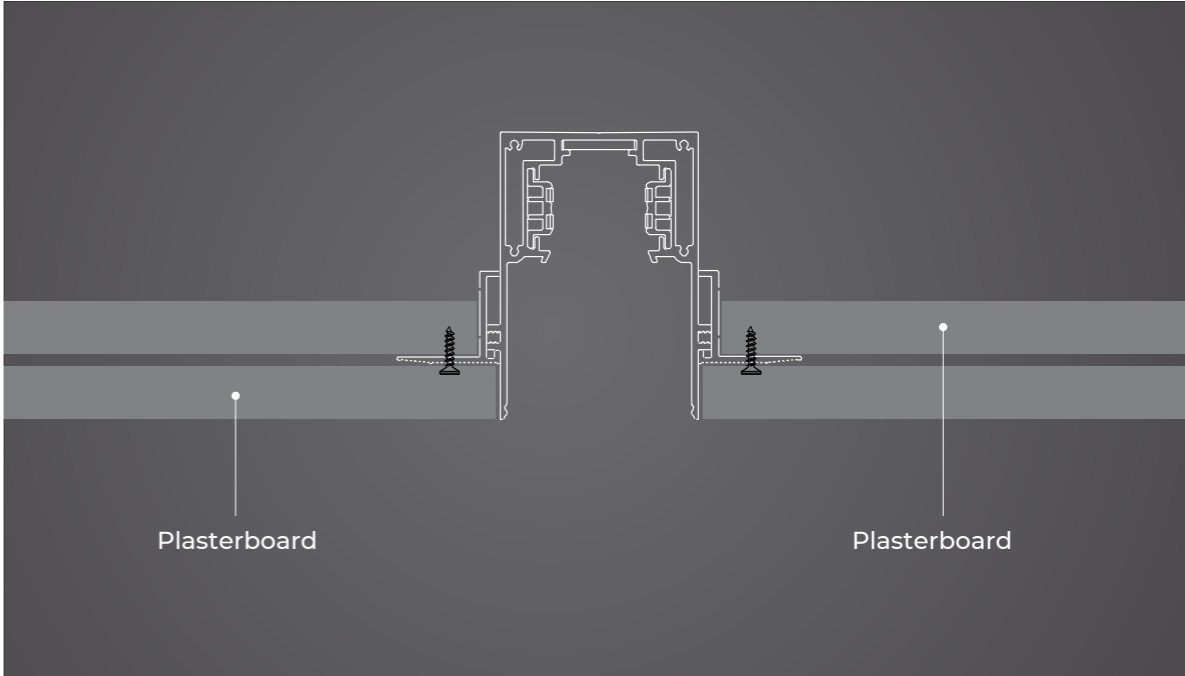
Up & down lighting make a better lumen

GCTL40 track system is operated with 48V Flexible light strip, which can be easily installed and cut. The H-type track of lighting upward & downward, provides better lighting effect in the space.



Designed for nearly any thickness of ceilings

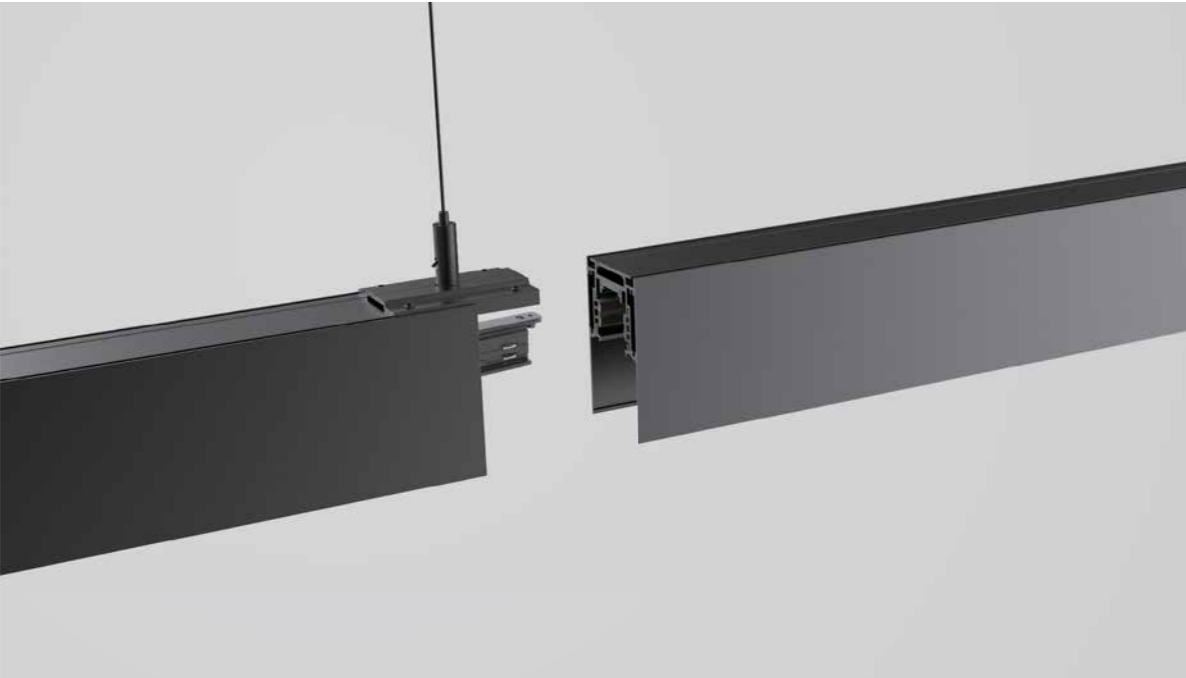
The track system can be suspended, surface mounted or recessed from the ceiling. The option of recessed with trimless, enables the lighting design to adapt to changing styles and spaces



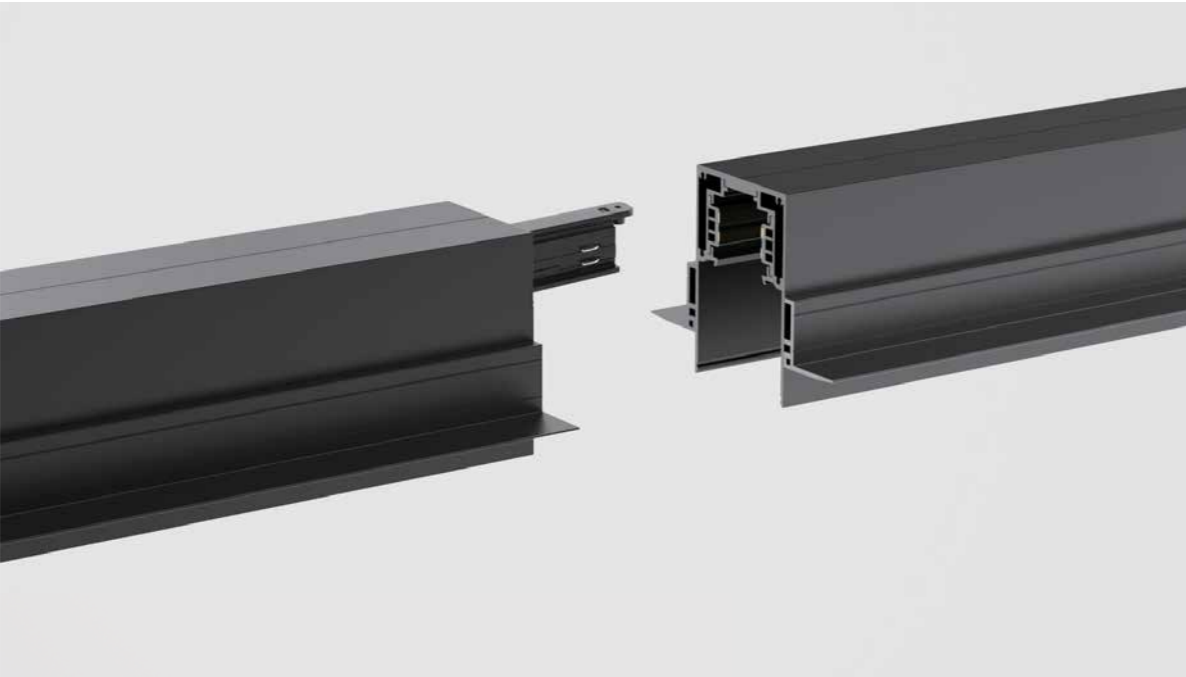
Features

Seamless splicing design, versatile yet sturdy

With several connectors, the track system can be easily changed styles, to fit in every interior environment.



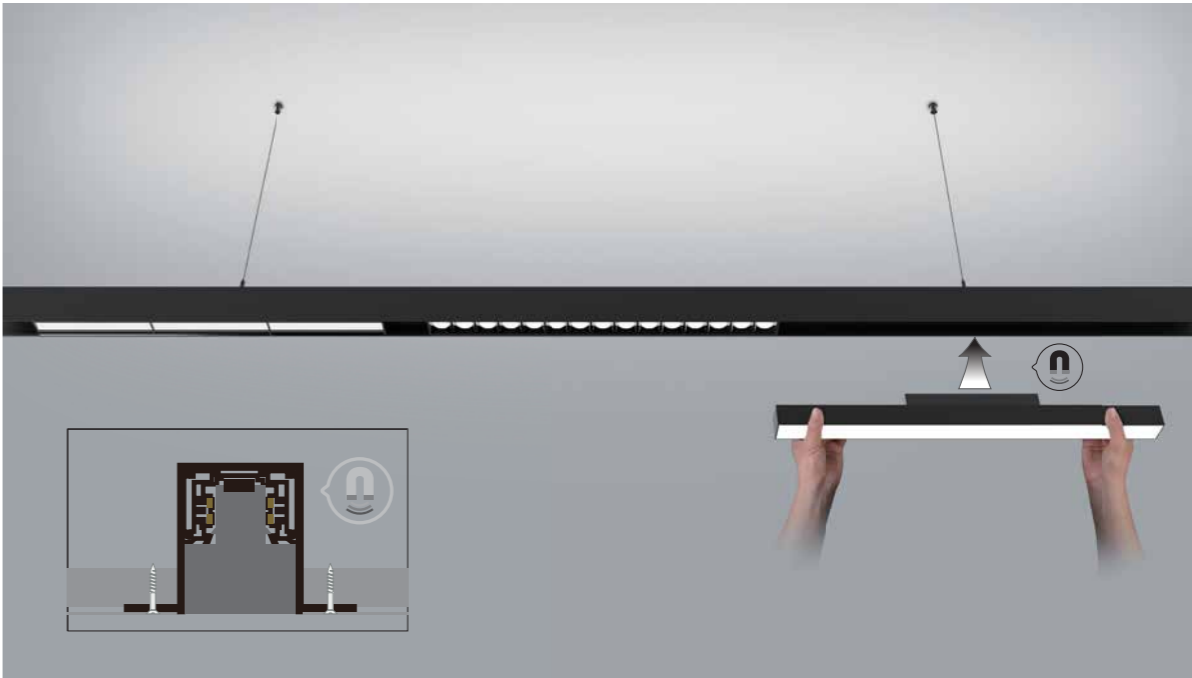
H-type Track Connection



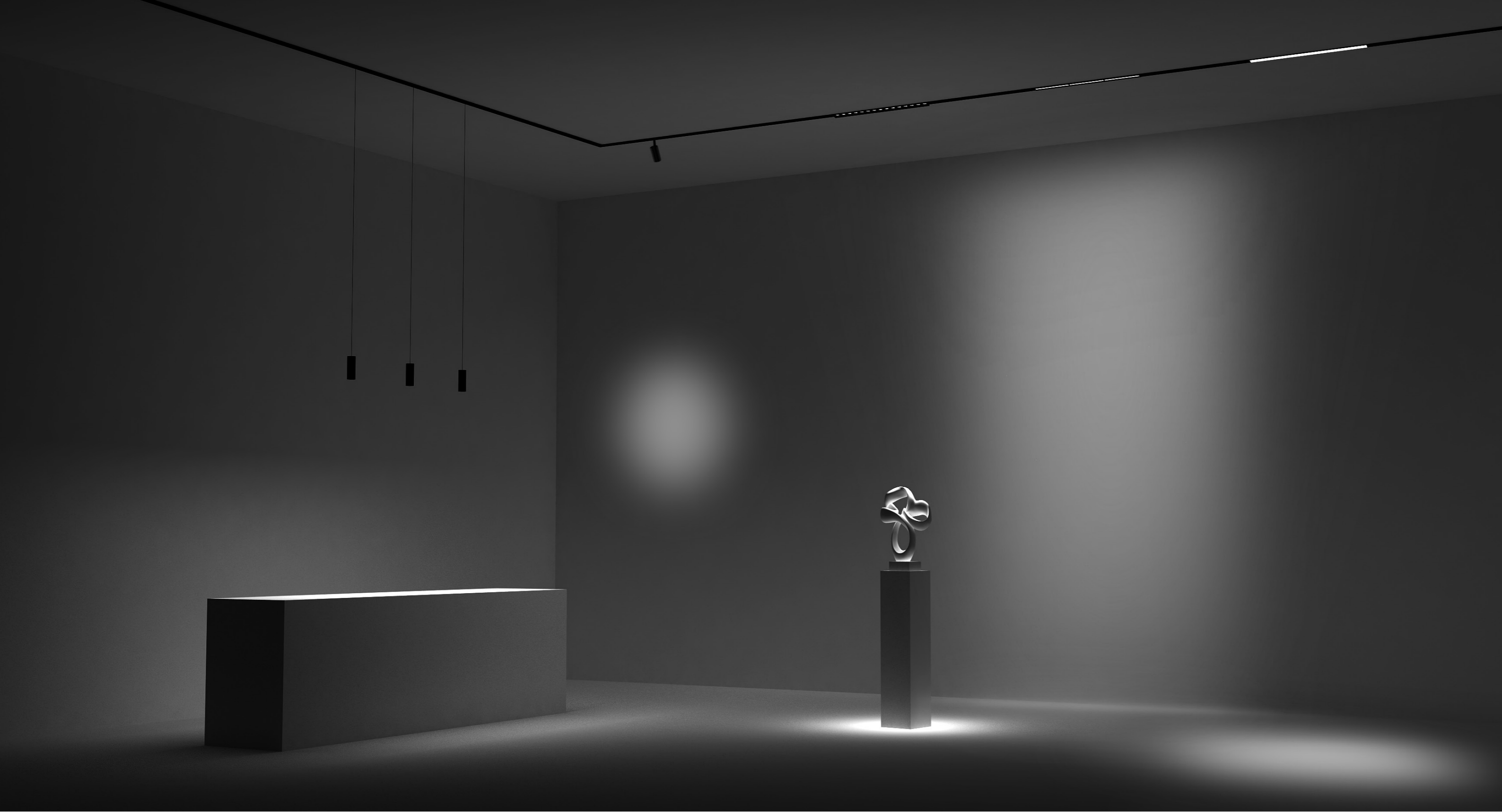
Trimless Recessed Track Connection

Seamless splicing design, versatile yet sturdy

Magnetic adapter allows fixtures be easily installed and replaced at anytime and anywhere. Plastic Buckles ensure track module stay in place tightly.

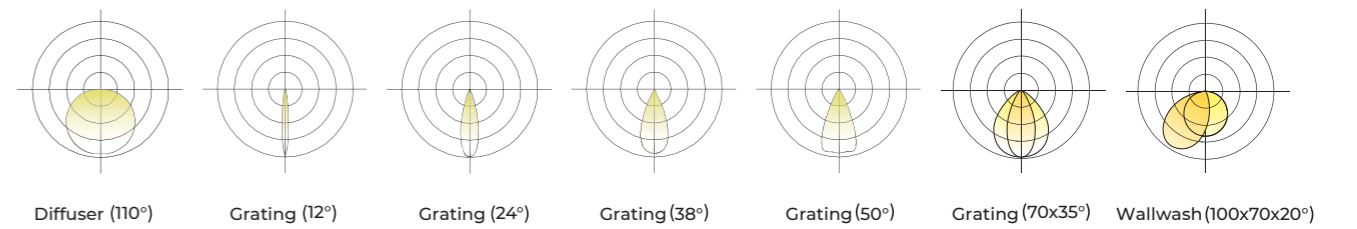


Magnetic track module

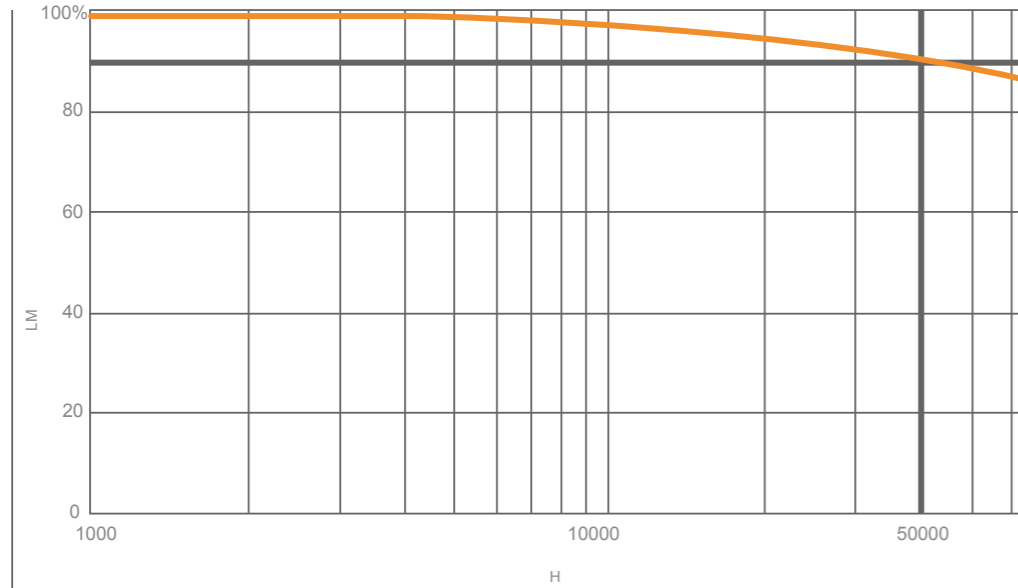


Multiple light distribution, more choices

GCTL40 track lighting system can achieve multiple light distribution, such as spot (12°), Flood (24°), wide flood (38°), broad flood (50°), oval flood (70° x 35°), wallwash (100° x 70° x 20°), diffuser (110°).

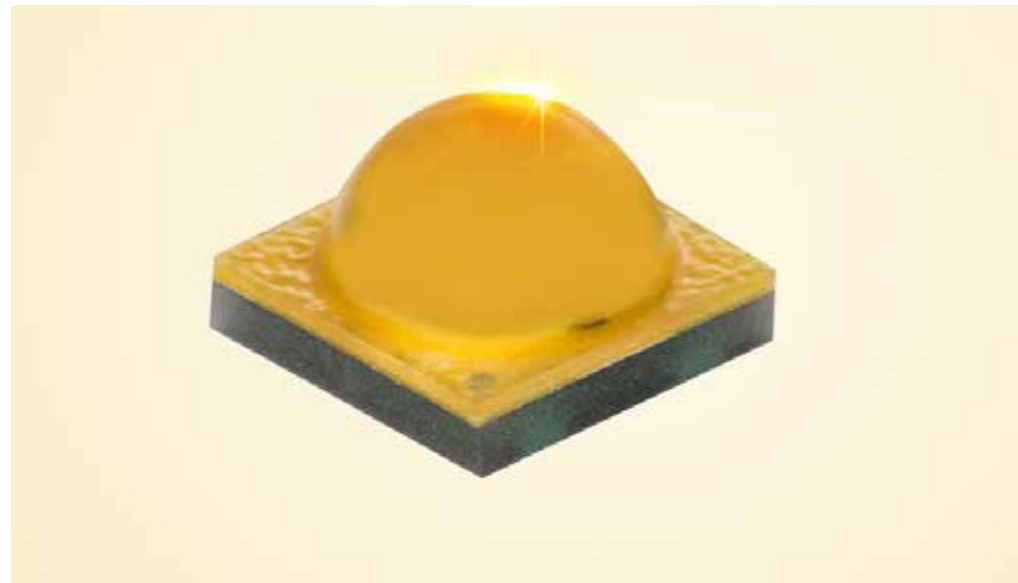


Top light source with long life span features, high reliability



Ultra long life span, LM80 proved

Excellent heat dissipation design ensures ultra Long life span(L90/B10>50000H) , 50000H lighting period of LED with the failure rate below 0.1%, ensures the luminaire high-quality and long lasting lighting

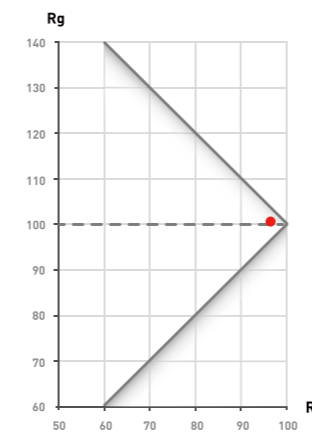


Cree LEDs, as the LM80 proved light source features high lumen maintenance.

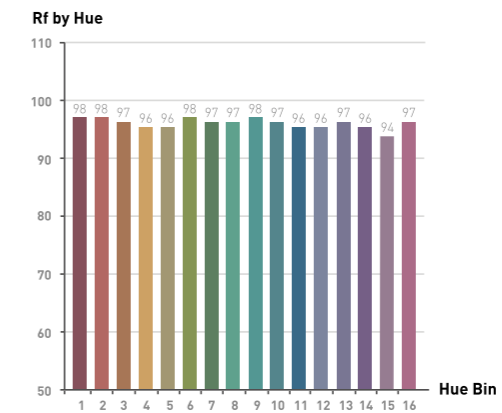
High colour rendering



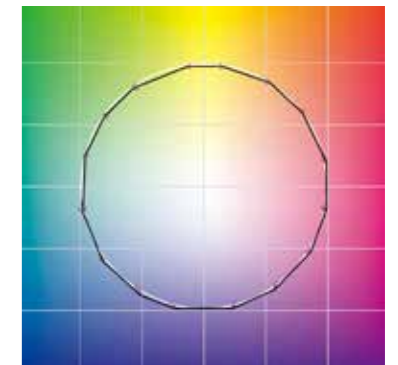
High CRI, CRI90 customisable



The closer the red dot to the triangle vertex, the better the colour.

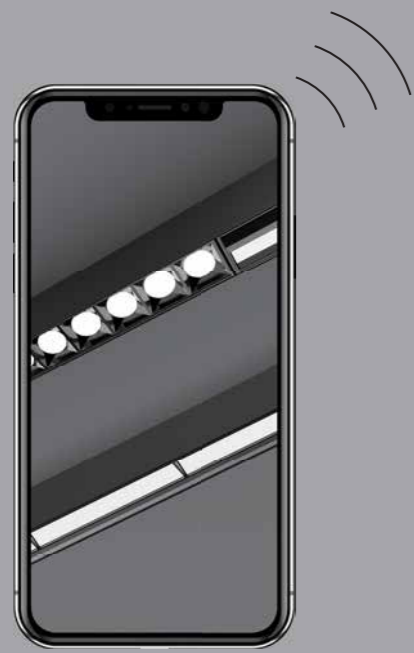


The closer the number of R1-R16 to 100, the better the colour.

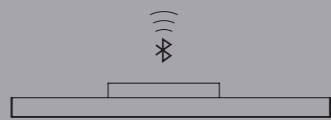
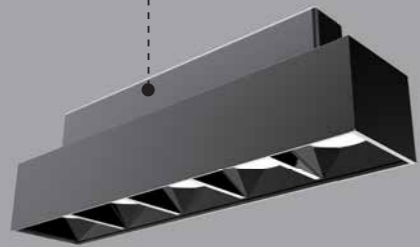


The closer the shape combined with the black dots to the circle, the better the colour.

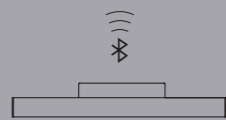
Bluetooth Mesh Technology



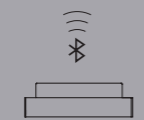
Bluetooth module



600mm Magnetic track module



400mm Magnetic track module



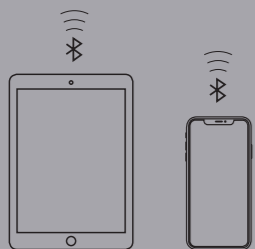
200mm Magnetic track module



Spotlight

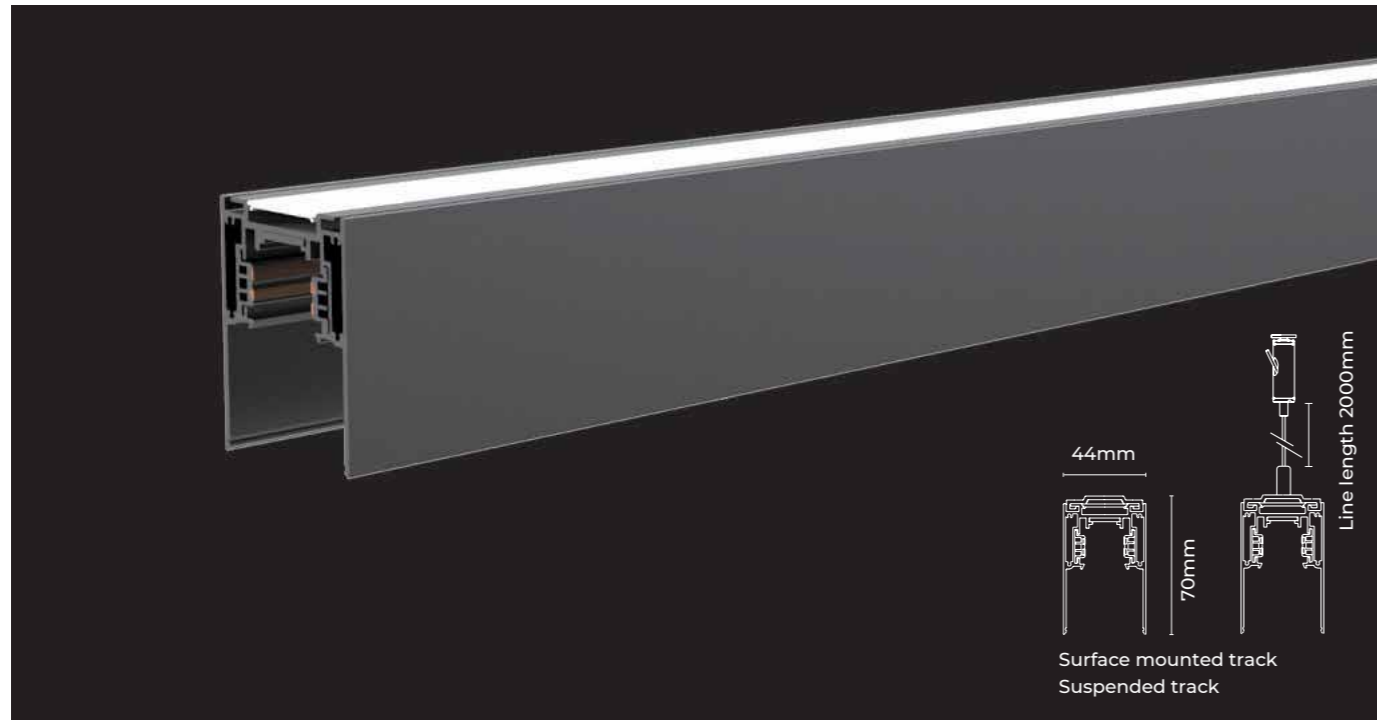


Suspended can light



Specification

Suspended H-Type Track



Specification	
Installation	Suspended / Surface mounted
Input voltage	48VDC
Typ.power	700W
Size	1m TLS-MH410-X 2m TLS-MH420-X 3m TLS-MH430-X
Colour	Black / White
Certification	CE/RoHS

Accessory

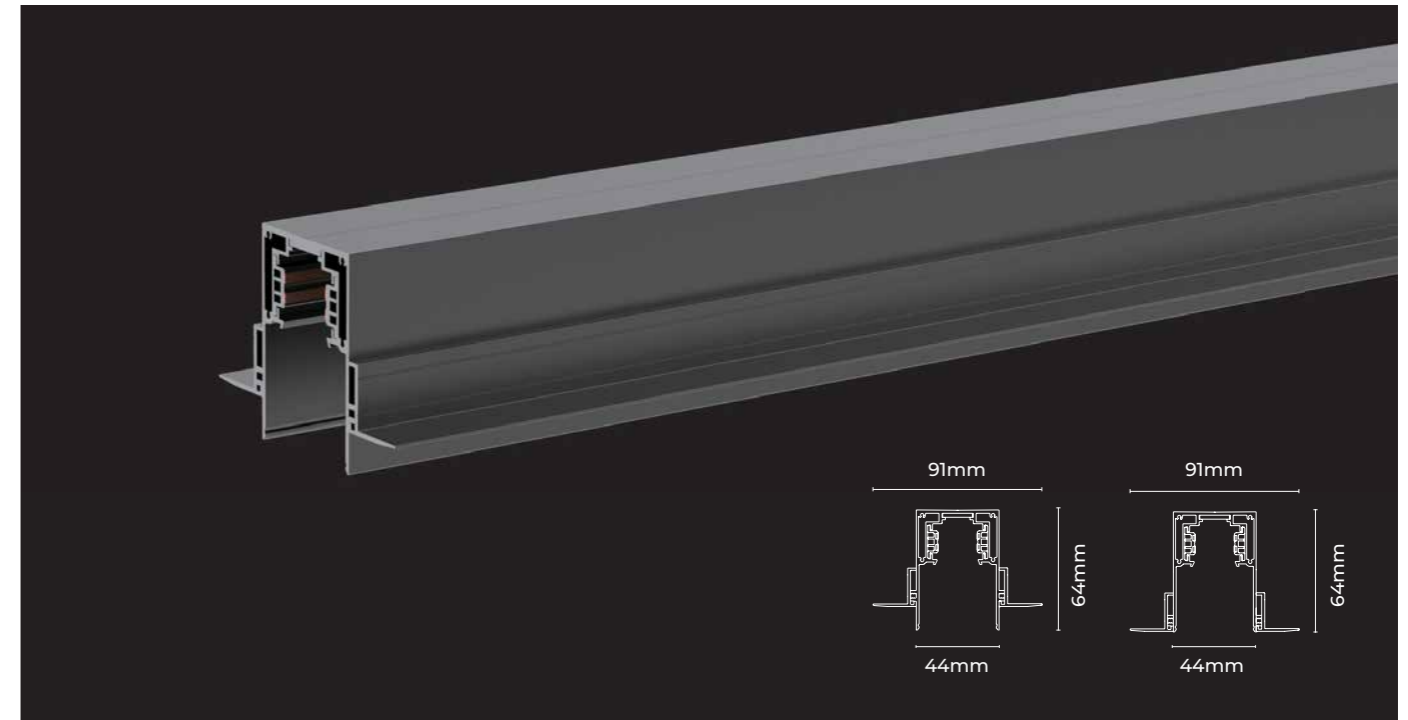
- Pendant cord GCPN-LA2
- Clip GCTLS-MH591-X
- H track connector GCTLS-MH592-X
- Power feeder unit of track GCTLS-M569-X
- Power feeder unit of LED strip GCTLS-M570-X
- I-type electrical connector GCTLS-M567-X
- Flexible electrical connector of corner GCTLS-M568-X
- L90 corner GCL90-MH40FBXB
- Diffuser of H-type track GCCV-M40FD2500-X
- Blind cover GCCV-M40FB2500-X
- End cap GCTLS-MH400-X
- Flexible strip for upward lighting GCD8120-48-10mm
- 100W Power supply CCMW-V48-100S
- 200W Power supply CCMW-V48-200S
- 350W Power supply CCMW-V48-350S

Lighting Source

Flexible strip for upward lighting

Model	CRI	Lumens (4000K)	Voltage	Typ.power	Size	LEDs/meter	Cutting unit
D880-48V-10mm	>80	655LM/M	48V	5.8W/m	40000x10x1.5mm	80LEDs	50mm/4LEDs
D8120-48V-10mm	>80	985LM/M	48V	8.8W/m	30000x10x1.5mm	120LEDs	33.3mm/4LEDs

Trimless Recessed Track



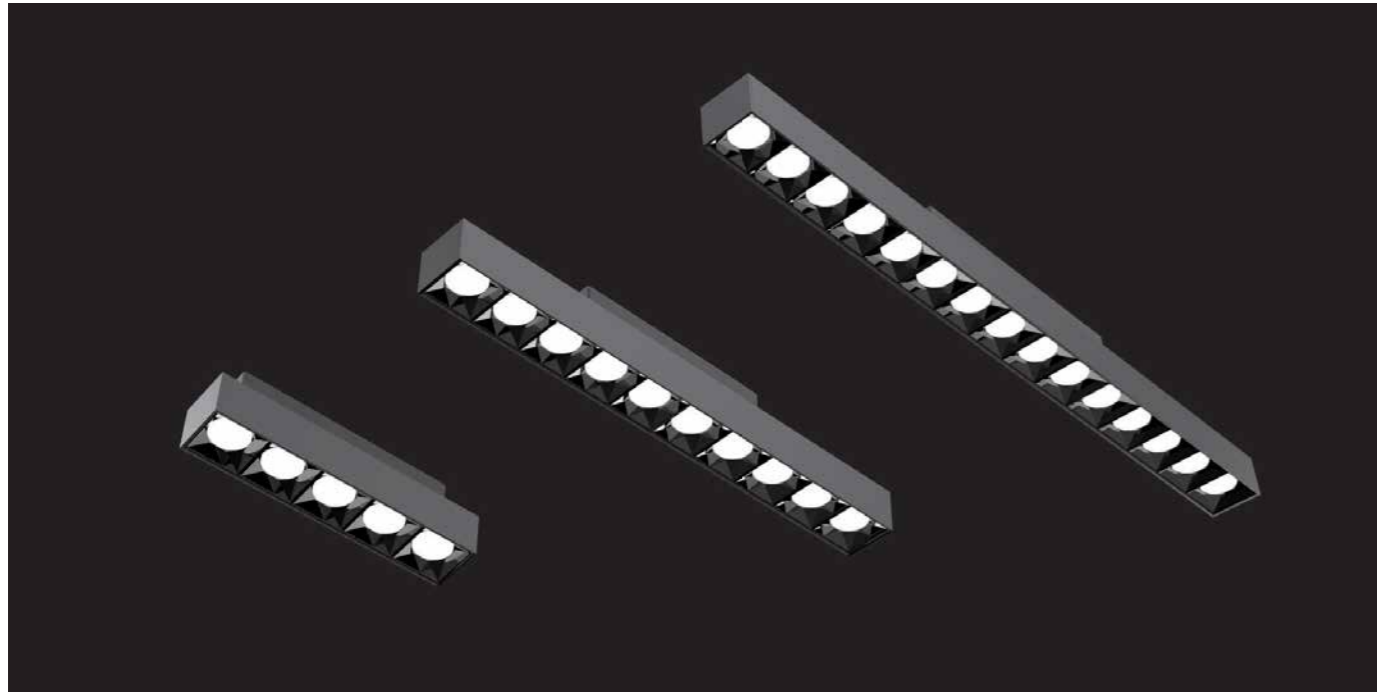
Specification	
Installation	Recessed with trimless
Input voltage	48VDC
Typ.power	700W
Size	1m TLS-MR410-X 2m TLS-MR420-X 3m TLS-MR430-X
Colour	Black / White
Certification	CE/RoHS

Accessory

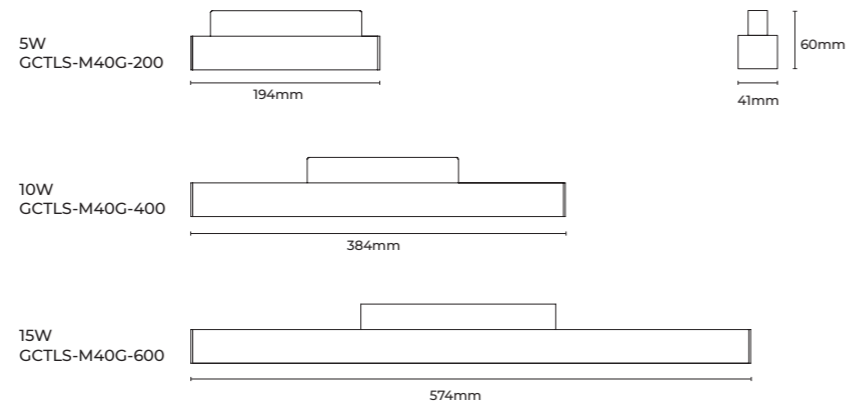
- Track electrical connection GCTLS-M569-X
- I-type electrical connector GCTLS-M567-X
- Flexible electrical connector of corner GCTLS-M568-X
- L90 corner GCL90-MR40FBXB
- L90N corner GCL90N-MR40FBXB
- L90W corner GCL90W-MR40FBXB
- Blind cover GCCV-M40FB2500-X
- End cap GCTLS-MR400-X
- 100W Power supply CCMW-V48-100S
- 200W Power supply CCMW-V48-200S
- 350W Power supply CCMW-V48-350S

Specification

GCTLS-M40G (Grating)



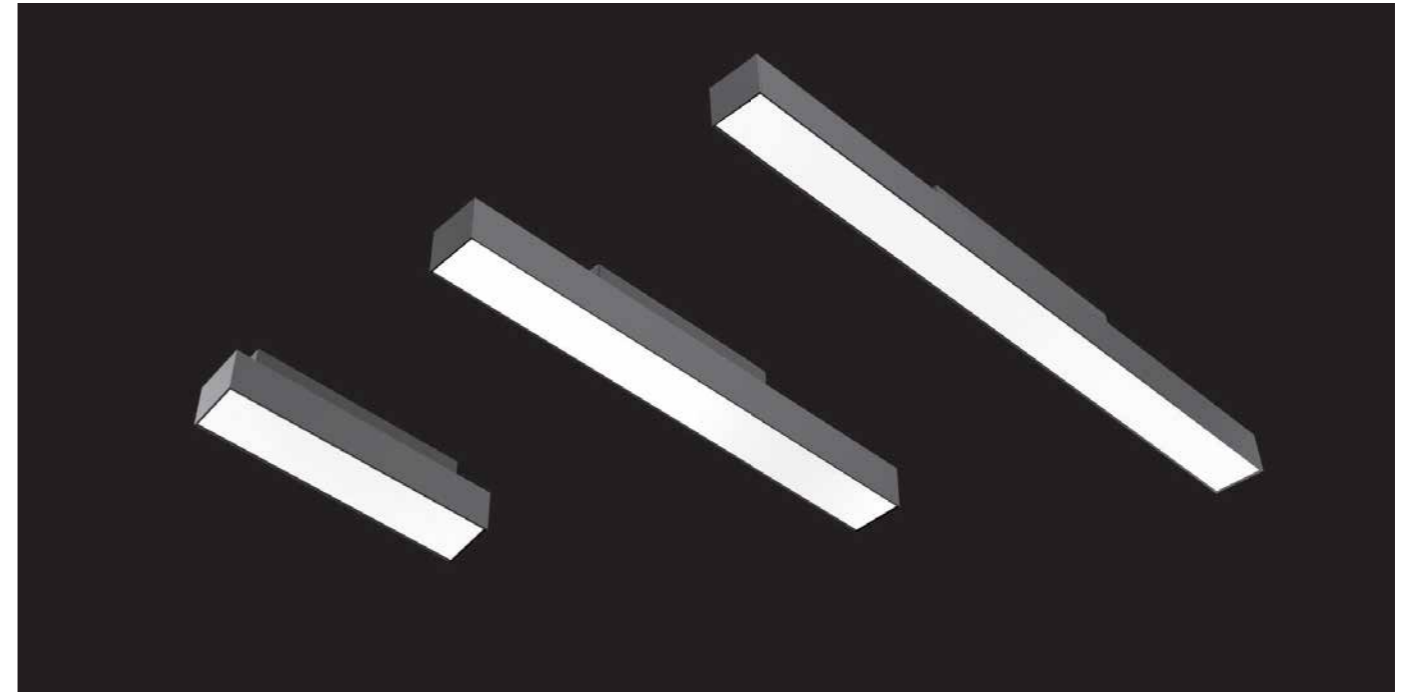
Specification	
Input voltage	48VDC
Power	5W/10W/15W
Lumens	450lm/900lm/1350lm
CCT	3000K/4000K
CRI	80/90
Beam angle	12°/24°/38°/50°/70x35°
Colour	Black / White
Power Type	No Power
Certification	CE/RoHS



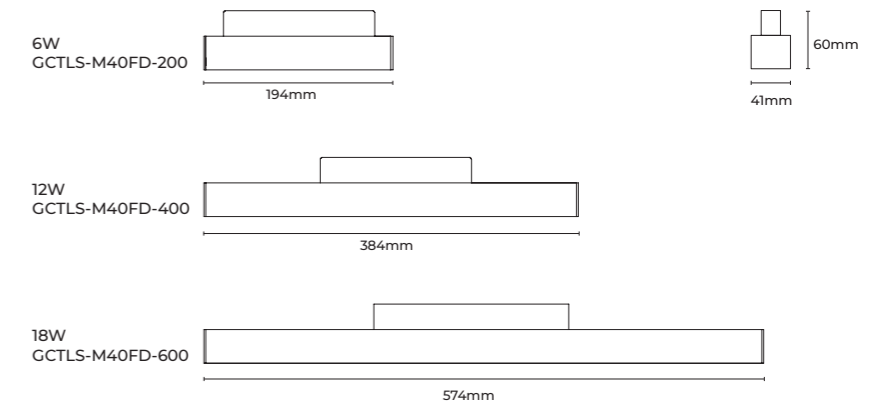
Ordering Code

Category	Installation	Section Size	Diffuser Shape	Diffuser Nature	Carrier Style	Profile Colour	End Cap Style	Length	Light Source Type	Type Power of Luminaire	CCT	CRI	Power Type	Package	Label Type	
GCTLS-M40G	Magnetic Installation	40	Grating	12°	E	White	Standed End Cap	200mm	Constant Voltage 48V Rigid	5W	3000K	>80	No Power	Distribution Individual	C	
				24°	F			400mm		10W	4000K	NW				Customised S
				38°	G			600mm		15W						
				50°	H											
				70x35°	I											
GCTLS	M	40	G	F	X	W	S	0400	T	10	NW	B	N	C	C	

GCTLS-M40FD (Diffuser)



Specification	
Input voltage	48VDC
Power	6W/12W/18W
Lumens	500lm/1000lm/1500lm
CCT	3000K/4000K
CRI	80/90
Beam angle	Diffuser (110°)
Colour	Black / White
Power Type	No Power
Certification	CE/RoHS



Ordering Code

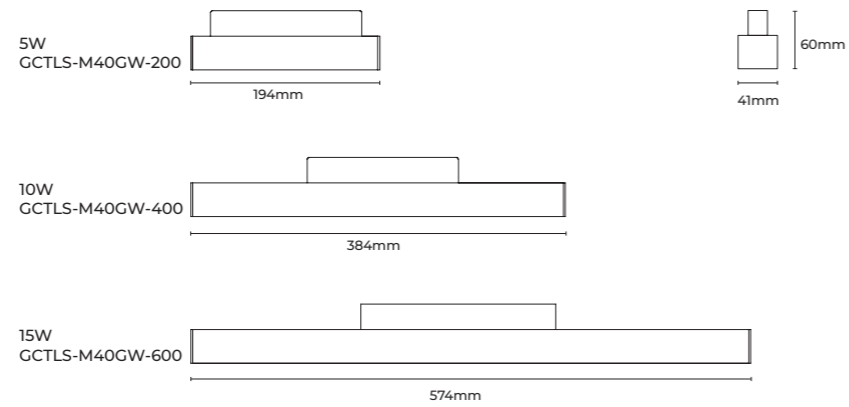
Category	Installation	Section Size	Diffuser Shape	Diffuser Nature	Carrier Style	Profile Colour	End Cap Style	Length	Light Source Type	Type Power of Luminaire	CCT	CRI	Power Type	Package	Label Type	
GCTLS-M40FD	Magnetic Installation	40	Flat	F	No Carrier	White	Standed End Cap	200mm	Constant Voltage 48V Rigid	6W	3000K	>80	No Power	Distribution Individual	C	
								400mm		12W	4000K	NW				Customised S
								600mm		18W						
GCTLS	M	40	F	D	X	W	S	0400	T	12	NW	B	N	C	C	

Specification

GCTLS-M40GW (Wallwash)

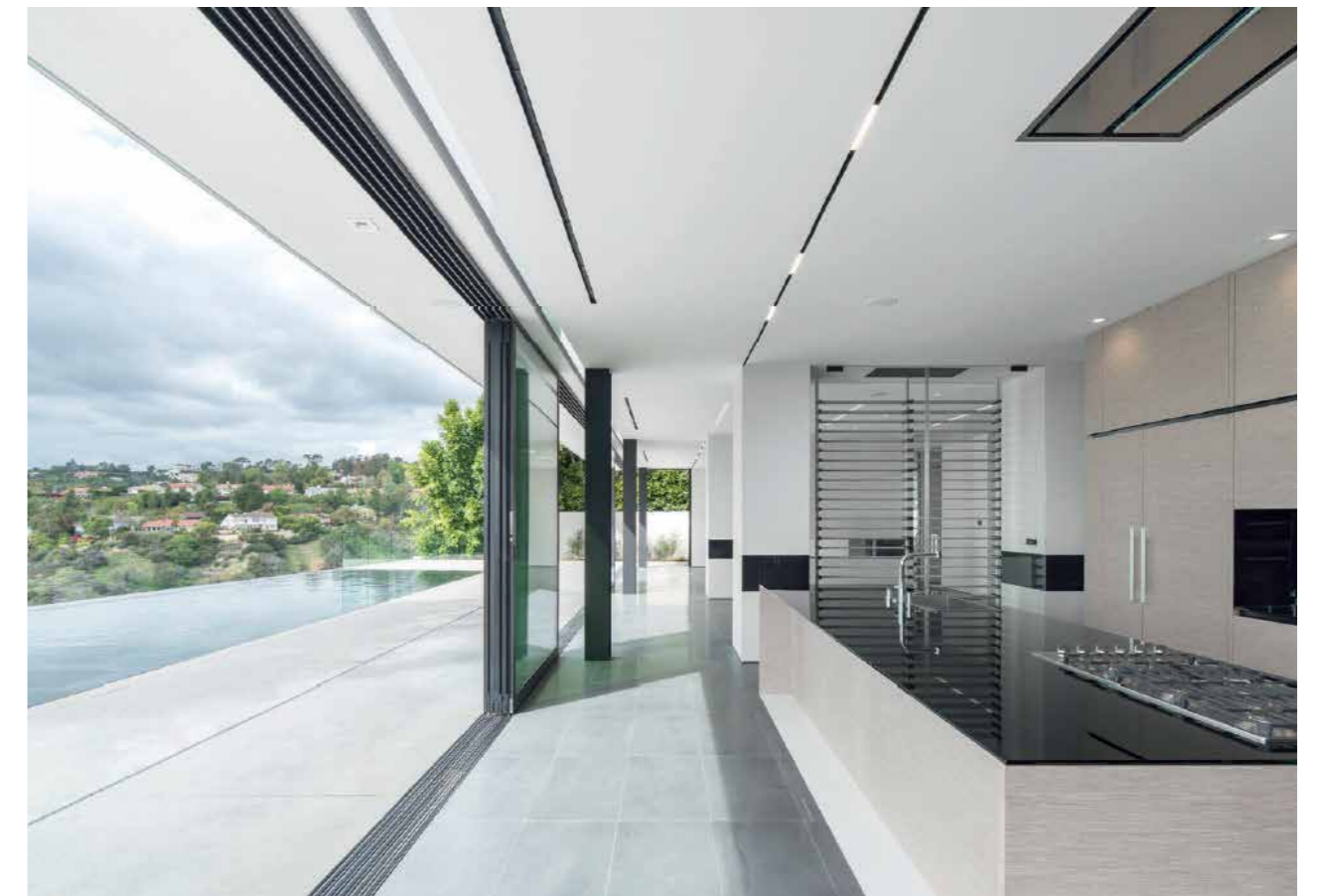


Specification	
Input voltage	48VDC
Power	5W/10W/15W
Lumens	300lm/600lm/900lm
CCT	3000K/4000K
CRI	80/90
Beam angle	Wallwash (100°x70°x20°)
Colour	Black / White
Power Type	No Power
Certification	CE/RoHS



Ordering Code

Category	Installation	Section Size	Diffuser Shape	Diffuser Nature	Carrier Style	Profile Colour	End Cap Style	Length	Light Source Type	Type Power of Luminaire	CCT	CRI	Power Type	Package	Label Type
GCTLS-M40GW	Magnetic Installation	40	Grating	Wallwash	No Carrier	White	Standed End Cap	200mm	Constant Voltage 48V Rigid	5W 5	3000K	WW	>80	No Power	Distribution Individual
						Black	Standed End Cap	400mm		10W 10	4000K	NW	C		
						Black	Standed End Cap	600mm		15W 15		S			
GCTLS	M	40	G	W	X	W	S	0400	T	10	NW		8	N	C







Greenlux Lighting

37 Chelmsford Street,
Williamstown North VIC 3016 Australia

Ph: 1300 650 625 or +61 3 8560 2895

Email: enquiries@greenlux.com.au

Website: www.greenlux.com.au