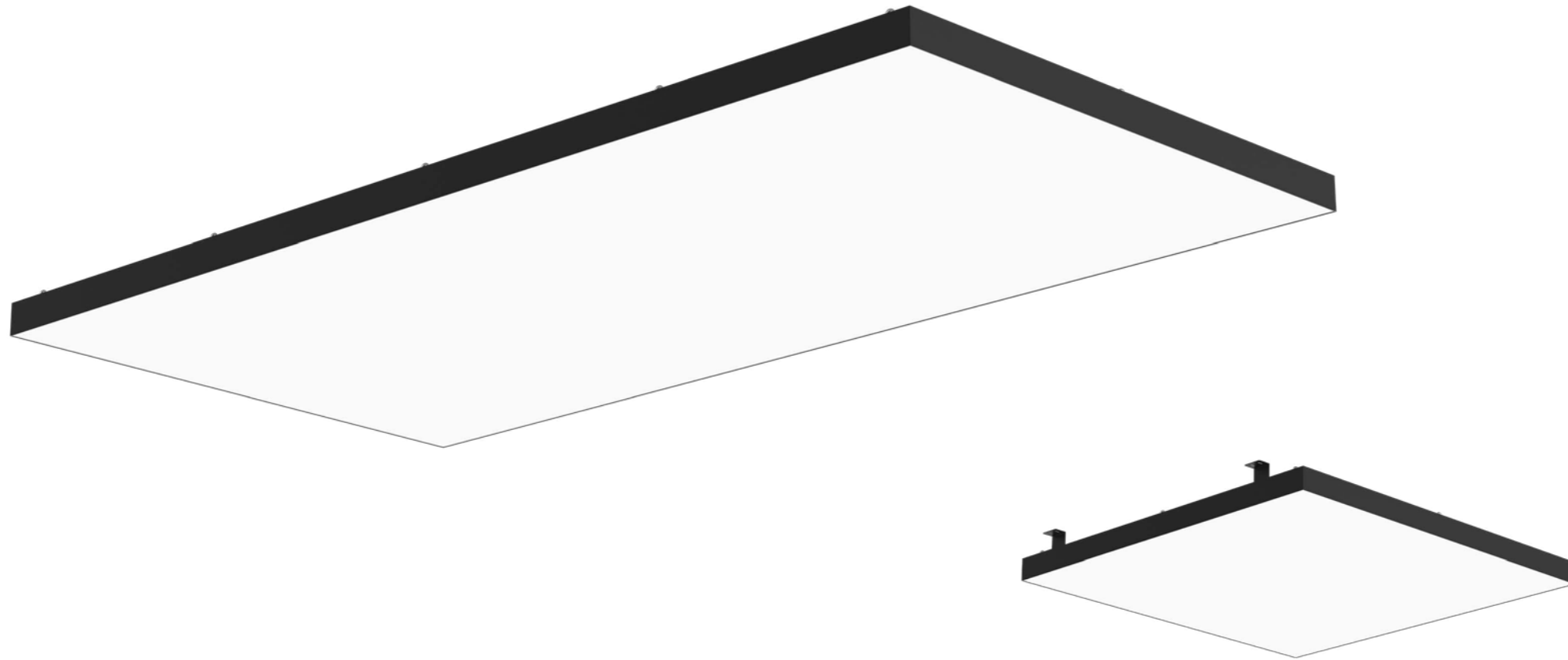


PLL-EA Series Opal LED Panel Light





Introduction

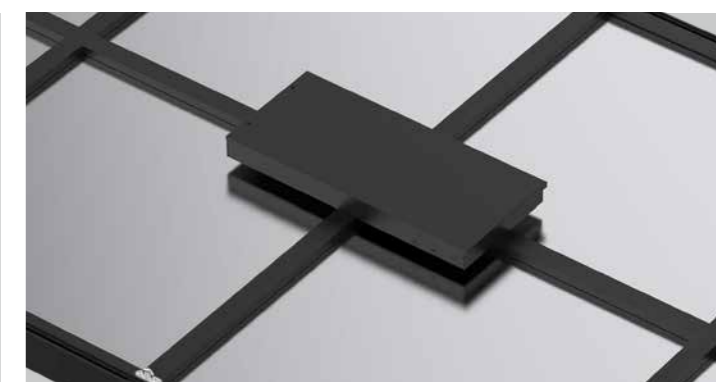
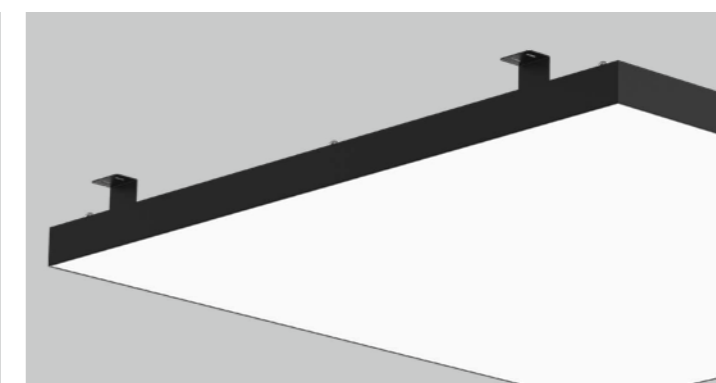
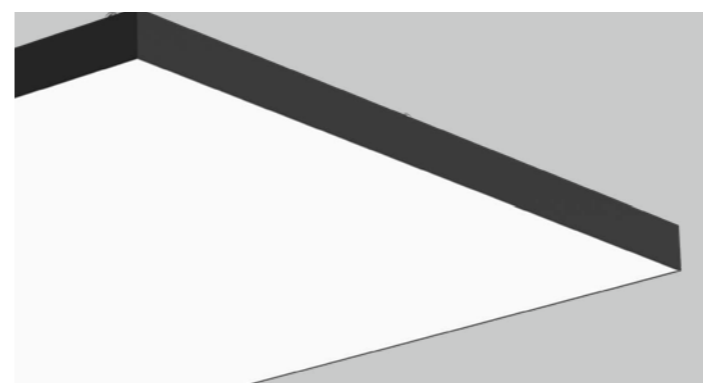
PLL-EA panel light is a large size design with simple and elegant appearance, seamless splicing. RA>90, the optical part adopts the secondary light distribution. With 120 degree wide beam angle, it has a uniform light output. The lighting surface adopts fireproof B1 grade soft film, backboard adopts 0.5mm thickness aluminium material which provides a strong quality and great thermal management.

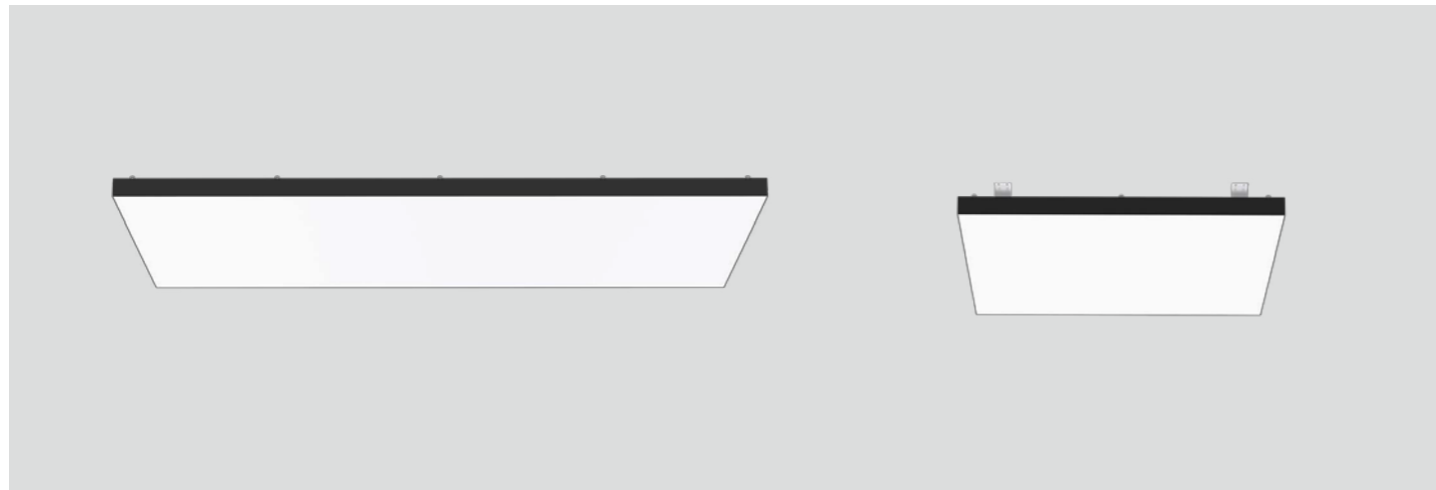
Features

- Direct lighting with large size, seamless splicing design.
- The lighting surface adopts fireproof B1 grade soft film.
- 80LM/W, CRI 90.
- External flicker free driver.
- 0-10V, DALI

Application Areas

It's widely used in showroom, shopping mall, automobile 4s shops etc.



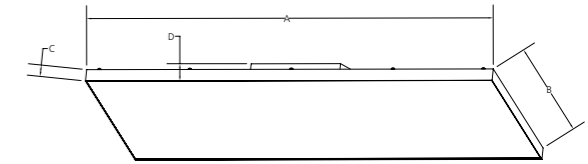


Technical Data Sheet

Code No.	GUPLL120120-60W-EA	GUPLL120240-120W-EA	GUPLL120300-180W-EA	GUPLL150150-80W-EA	GUPLL150300-240W-EA		
Dimension(mm)	1200*1200*110	1200*2400*110	1200*3000*110	1500*1500*110	1500*3000*110		
Cutout (mm)	-						
Watt(W)	60W	120W	180W	80W	240W		
Rated Input Voltage(V)	AC230V						
Input Voltage(V)	AC220-240V						
LED Module Input	DC42V						
Light Source	SMD2835						
SDCM	<6						
CCT(K)	1-CCT: 3000K/4000K/5000K						
CCT Selection DIP Switch	-						
Luminous Flux (lm) ±5%	Non-DIM	1-CCT	4050-4800	8640-9600	12900-14400	5700-6400	17200-19200
			DIM	4000-4450	8400-9100	12200-14000	5600-6200
	Non-DIM	2-CCT	-	-	-	-	-
			DIM	-	-	-	-
CRI	≥90						
Beam Angle (°)	120°						
UGR	<19						
LED Driver	Built-out						
Dimming Option	DALI/ 0-10V						
Sensor	-						
Emergency Kits	-						
Electrical Class	Class I						
Ingress Protection (IP Rating)	IP40						
Impact Resistance (IK Rating)	-						
Product Finishing(Base)	Black RAL9005						
Materials of Optics	PVC Soft film						
Materials of Housing	Aluminium						
Lifetime (hr)	50,000h						
Glow wire test (°C)	-						
Operating Temp. (°C)	-10°C ~40°C						
Storage Temp. (°C)	-20°C ~65°C						
Installation	Suspended/Surface mounted						

Measurement

Code	Dimension(mm)				Size(mm)	Product Weight (Kg)	
	A	B	C	D		N.W/PC	G.W/PC
GUPLL120120-60W-EA	1200	1200	70	110	1200*1200*110	11	14
GUPLL120240-120W-EA	2400	1200	70	110	1200*2400*110	21	25
GUPLL120300-180W-EA	3000	1200	70	110	1200*3000*110	27	30
GUPLL150150-80W-EA	1500	1500	70	110	1500*1500*110	17	20
GUPLL150300-240W-EA	3000	1500	70	110	1500*3000*110	34	37



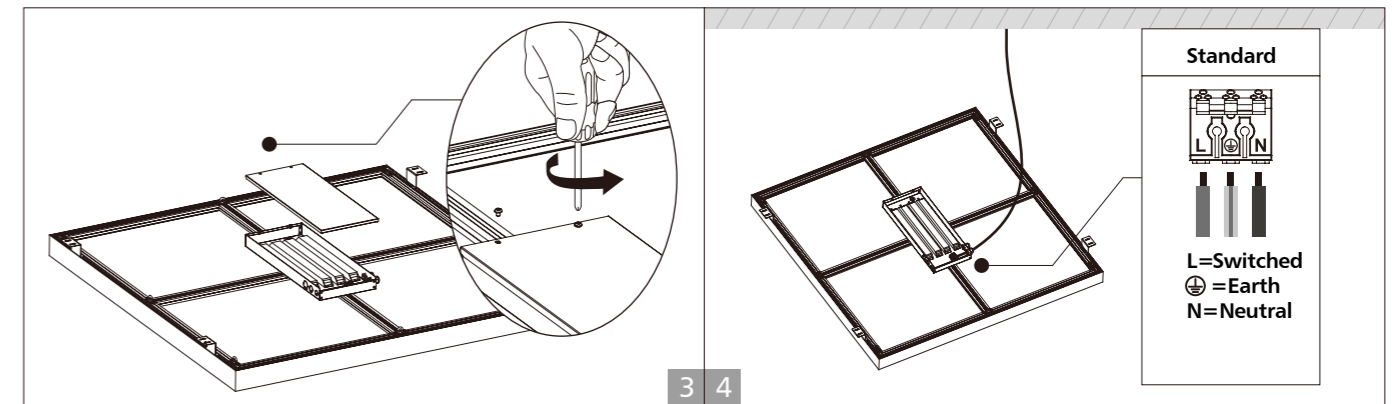
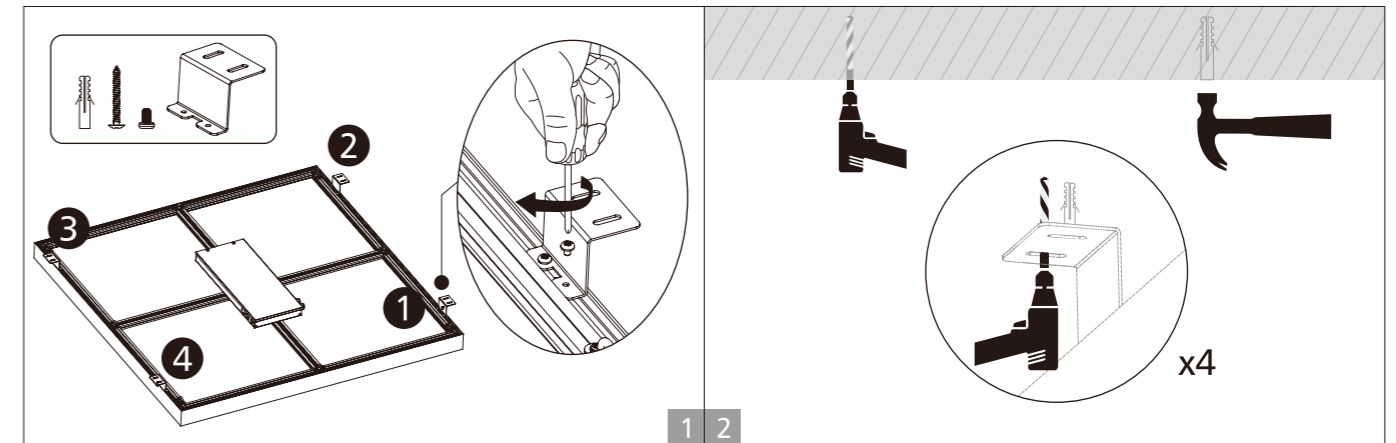
Driver Datasheet (Non- Dimmable)

Total load wattage		60W	80W
Output	Output Voltage range	DC3-42V	
	Rated output current	1300mA	1800mA
	Line Regulation	±5%	
	Setup, Rise Time	0.5S	
	Flickering Index	<5% IEEE1789 NO RISK	
Input	Input Voltage	AC180-264V	
	Rated Input Voltage(V)	200-240V	
	Frequency	50/60Hz	
	Input Current	0.38A	0.50A
	Rated Input Current	0.34A	0.45A
	Power Factor	0.9	
	THD	<20%@AC230V	
	Efficiency	>88%	
	No load wattage	≤0.5W	
Protection	Short circuit protection	Pass	
	Over voltage protection	Pass	
	Over temperature protection	Pass	
Safety &EMC	Withstand voltage	I/P-FG:1.6kVac, <5mA 60S;	
	Isolation Resistance	I/P-O/P: 500VDC, ≥100M Ω	
	Surge	IEC/EN61000-4-5 (L/N-PG:2KV) (L-N:1KV)	
	EMC Emission	EN55015, EN61000-3-2	
EMC Immunity	EN61000-4-2,3,4,5,6,8,11; EN61547		

Driver Datasheet (Dali Dimmable)

Total load wattage		60W	80W
Output	Output Voltage range	DC20-54V	
	Rated output current	1300mA	1800mA
	Line Regulation	±5%	
	Setup, Rise Time	0.5S	
	Flickering Index	<5%	
Input	Input Voltage	198-264VAC	
	Rated Input Voltage(V)	220-240V	
	Frequency	50/60HZ	
	Input Current	0.34A	0.45A
	Rated Input Current	0.31A	0.41A
	Power Factor	0.9	
	THD	<20%@AC230V	
	Efficiency	>88%	
	No load wattage	≤0.5W	
	Protection	Short circuit protection	Pass
Over voltage protection		Pass	
Over temperature protection		Pass	
Safety &EMC	Withstand voltage	I/P-FG:1.6KVac, <5mA 60S;	
	Isolation Resistance	I/P-O/P: 500VDC, ≥100M Ω	
	Surge	IEC/EN61000-4-5 (L-N:1KV)	
	EMC Emission	EN55015, EN61000-3-2	
	EMC Immunity	EN61000-4-2,3,4,5,6,8,11; EN61547	

Surface mounted installation



Installation Procedure

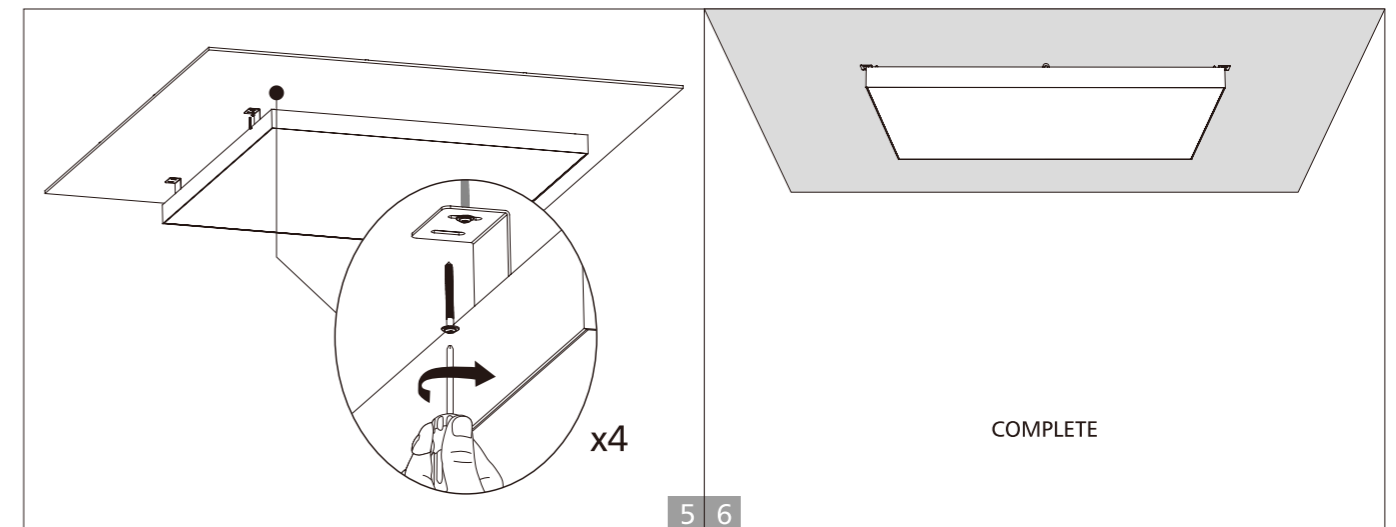
WARNING

1. Switch off before installation.
2. Switch on only after complete installation and examination of the circuit.



CAUTION

Make sure that the mounting surface or structural member used for installation can support the weight of LED Panel.



Suspended installation

