

Premium SFE-EM2 LED Spitfire

LED Emergency Lighting





Introduction

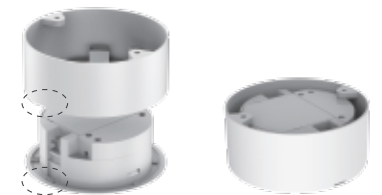
Premium SFE-EM2 LED Spitfire is controlled by smart IC, with self-test function. 3W for standard and 6W for high output model. It is All-In-One type including open area and corridor lens, recessed and surface (option) mounting way. Using the simple line and elegant element, SFE-EM2 has the ability to transcend ordinary design, as well as product quality.

Features

- Round lens for open area application.
- Oval lens for escape route application.
- High power & efficient LED.
- Surface or recessed mounting.

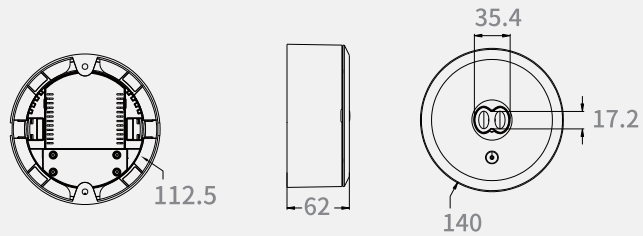
Convenient Installation

- Mount surface mounting kit on the surface screws and anchors
- After wiring connection..... snap unit on surface mount kit
- Align the marker

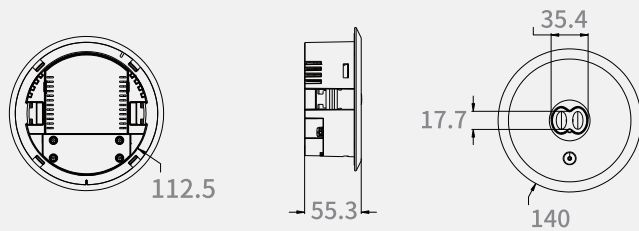


Dimensions unit:mm

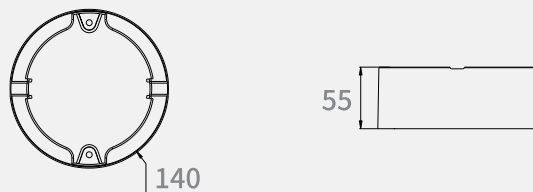
Surface Mounting



Recessed Mounting



Surface Box



Model List

Model	Input Voltage	Output Power	Lumen Output	Charge Duration	Discharge Duration	Battery	Test Mode
GUPRE-3W-SFE-EM2-ST-AT	200-240V	3W Max	290lm	16H	2H	LiFePO4 6.4V1500mAh	AT
GUPRE-3W-SFE-EM2-ST-MT	200-240V	3W Max	290lm	16H	2H	LiFePO4 6.4V1500mAh	MT
GUPRE-6W-SFE-EM2-HO-AT	200-240V	6W Max	550lm	16H	2H	LiFePO4 9.6V1500mAh	AT
GUPRE-6W-SFE-EM2-HO-MT	200-240V	6W Max	550lm	16H	2H	LiFePO4 9.6V1500mAh	MT

Driver Datasheet

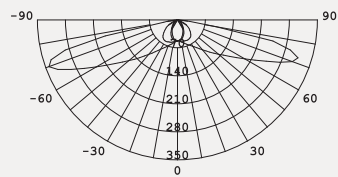
Model	SFE-EM2-ST	SFE-EM2-HO
Power Consumption	3W Max	6W Max
Frequency	50/60Hz	50/60Hz
Input Voltage	200-240V	200-240V
Discharge Efficiency	≥80%	≥80%
Output Power	2.2W±0.3W	4.5W±0.5W
Power Factor	≥0.3	≥0.3
Rated Input Current	≤0.035A	≤0.055A
Full load output voltage	DC2.8-3.2V	DC5.6-6.4V
Rated output current	680mA±10%	700mA±10%
Surge	0.5KV	0.5KV
Withstand voltage	AC3750V	AC3750V

Technical Data

Model	SFE-EM2
Power Consumption	3W/6W Max
Input Voltage(V)	200-240V
LED	SAMSUNG 3535
CCT(K)±10%	5000K
"Luminous Flux(lm) ±10%"	290/550lm
CRI	>80
LED Driver	Built-in
Protection Class	Class II
IP Rating	IP20
Finishing color	White/Black
Material	PC
Glow wire test (°C)	COVER:850°C / LENS:650°C
Operating Temp (°C)	0°C ~45°C
Storage Temp (°C)	0°C ~65°C

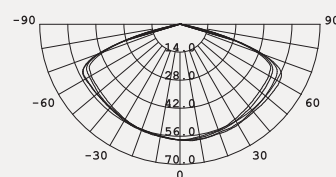
Photometric Data

Oval lens for escape route application



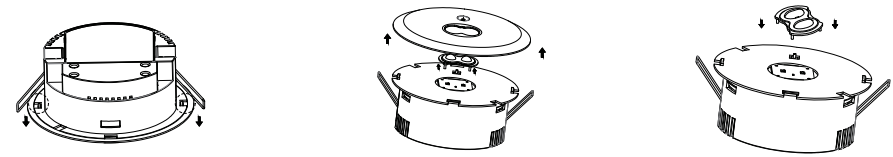
Beam angle: C0°:163° C90°:61°

Round lens for open area application



Beam angle: 148°

Changeable Lens



Instructions for Automatic Test Option

1. Once the unit is powered up it will automatically initiate a self test and diagnostics as follows:

- Every 4 seconds: Checks for battery disconnection, charger board fault, lamp fault and transfer fault.
- Every month: Performs a 3 minutes duration test.
- Every year: Performs a 1 hour or 3 hours duration test.

All test functions are factory preset and do not need field adjustment.

2. Dual Colour Indicator LED Status

- Green Solid On Ready/Normal Operation
- Red Requires Service

•	One flashes, 4 seconds pause	Battery not connected
••	Two flashes, 4 seconds pause	Low battery voltage
•••	Three flashes, 4 seconds pause	Charger board fault
••••	Four flashes, 4 seconds pause	AC/DC transfer fault
•••••	Five flashes, 4 seconds pause	LED lamp fault

NOTE: After repairing a service fault, press and hold the test button for 2 seconds to reset the flashing indicator light to green.

3. Manual Testing

Press test button once	30 seconds duration test
Press test button twice within 2 seconds	3 minutes duration test
Press test button 3 times within 2 seconds	30 minutes duration test
Press test button 4 times within 2 seconds	1 hour or 3 hours duration test