

Lucci Series

LED Downlight

Features

- Stylish design, deep recess, COB Chipset
- 24°, 40°, 55° beam angle
- Deep anti-glare, UGR<19
- Lower profile
- 5W / 7W / 10W / 15W optional



Specifications

Lightsource Type	COB
Input Voltage	200~240V AC
Wattage	5W / 7W / 10W / 15W
Lumen pr. Watt	85lm/W
IP Rating	IP40
CCT	3000K / 4000K
CRI	>90
Beam Angle	24° / 40° / 55°
Dimming	Triac dimmable, DALI / 1-10V dimmable
Energy Class	A - > A++
Lifetime L70/TM21 Calculated	68,000 hours
Warranty	5 years

Dimensions & Materials

Product Dimensions (mm)	5W	Ø80*43	(D*H)
	7W	Ø80*43	(D*H)
	10W	Ø90*48	(D*H)
	15W	Ø105*55	(D*H)
Cutout Dimensions (mm)	5W	Ø68-70	
	7W	Ø68-70	
	10W	Ø80-83	
	15W	Ø90-92	
Wire Length (cm)	25-30		
Lamp Rotation	Non		
Finish Colour	Matt White / Matt Black		
Housing Material	Aluminium, PC		

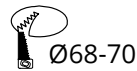
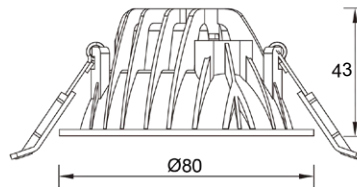


Lucci Series

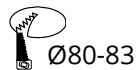
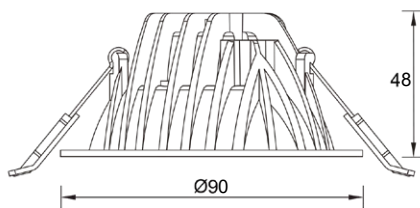
LED Downlight

Dimensions (mm)

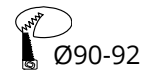
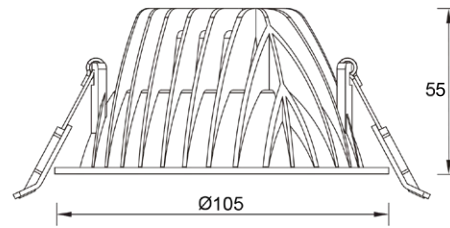
5W / 7W



10W



15W



Model

Model	Wattage (W)	Voltage (V)	CCT	Output	Lumen output (lm)	Dimensions (mm)	Cutout Size (mm)
GDLUC-5W-80	5W	AC200V~240V	3000K / 4000K	36V / 190mA	450 - 600lm	Ø80*43	Ø68-70
GDLUC-7W-80	7W		3000K / 4000K	36V / 200mA	575 - 650lm	Ø80*43	Ø68-70
GDLUC-10W-90	10W		3000K / 4000K	36V / 250mA	800 - 900lm	Ø90*48	Ø80-83
GDLUC-15W-105	15W		3000K / 4000K	36V / 350mA	1255 - 1360lm	Ø105*55	Ø90-92