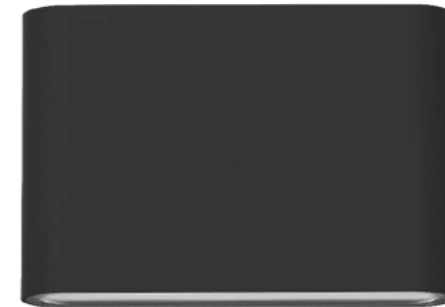


WL90 LED Wall Light IP65

Up/Down & Weatherproof





Introduction

WL90 LED Wall Light is an ultra-thin design which looks similar to a power bank. It adopted SMD light source in both ends with PC lens. The wall-washing design creates optic effect, which can produce higher and further lighting. It has been adopted ADC12 Aluminium which offers a great heat dissipation. Besides, it has up and down lighting design which can achieve a desired atmospheric effect. IP65 waterproof will suit to a wider application area.

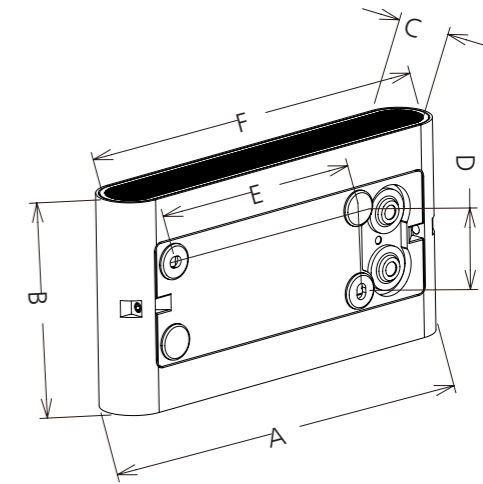
Features

- Ultra-thin with only 30.5mm thickness.
- Up & down lighting design.
- Wall-washer design with polarized lens 8 degree.
- IP65 waterproof.
- Interchangeable CCT (3000K+4000K+5700K) with slide switch.
- Internal flicker free driver.

Application Areas

It is designed for indoor and outdoor lighting applications, such as hotel, park, and corridors etc.





Technical Data Sheet

Code No.	GUWL90-6W	GUWL90-6W-Tri-Color	GUWL90-10W	GUWL90-10W-Tri-Color
Dimension(mm)	135*90*30.5		175*90*30.5	
Cutout (mm)	-			
Watt(W)	6W		10W	
Rated Input Voltage(V)	AC220-240V			
Input Voltage(V)	AC230V			
LED Module Input	-			
Light Source	SMD2835			
SDCM	<6			
CCT(K)	3000K/4000K/5000K/5700K		3000K/4000K/5700K	
CCT Selection DIP Switch	YES			
Luminous Flux (lm) ±5%	Non-DIM	1-CCT	530-670	940-1050
	DIM		-	
	Non-DIM	3-CCT	540-680	950-1060
	DIM		-	
CRI	≥80, ≥90			
Beam Angle (°)	29° x77° x8°			
UGR	-			
LED Driver	Built-in			
Dimming Option	NO			
Sensor	NO			
Emergency Kits	NO			
Electrical Class	Class I			
Ingress Protection (IP Rating)	IP65			
Impact Resistance (IK Rating)	IK08			
Product Finishing(Base)	White RAL 9016/Black RAL 9005			
Materials of Optics	PC			
Materials of Housing	Aluminum ADC12			
Lifetime (hr)	L 70B50 50000hr			
Glow wire test (°C)	750°C			
Operating Temp. (°C)	-20°C ~45°C			
Storage Temp. (°C)	-20°C ~65°C			
Installation	Wall mount			

Measurement

Code	Dimension(mm)					Size(mm)
	A	B	C	D	E	
GUWL90-6W	135	90	30.5	36	66.1	135*90*30.5
GUWL90-10W	175	90	30.5	34.5	101.5	175*90*30.5

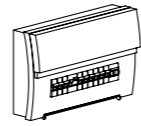
Driver Datasheet (Non-dimmable)

Total load wattage		6W	10W
Output	Output Voltage range	DC:30-40V	
	Rated output current	145mA	
	Line Regulation	±5%	
	Setup, Rise Time	≤0.5S	
	Flickering Index	<3%(NO RISK)	
Input	Input Voltage	AC220-240V	
	Rated Input Voltage(V)	AC230V	
	Frequency	50/60Hz	
	Input Current	0.038A	0.055A
	Rated Input Current	0.033A	0.048A
	Power Factor	0.8 @230V	
	THD	-	
	Efficiency	82%@230V	
Protection	No load wattage	<0.5W	
	Short circuit protection	Pass	
	Over voltage protection	Pass	
Safety & EMC	Over temperature protection	Pass	
	Withstand voltage	I/P-O/P:3.75KVac, <5mA 60S	
	Isolation Resistance	I/P-O/P: 500VDC, ≥100M Ω	
	Surge	IEC/EN61000-4-5(P<25W; L-N:500V)	
Safety & EMC	EMC Emission	EN55015, EN61000-3-2	
	EMC Immunity	EN61000-4-2,3,4,5,6,8,11; EN61547	

Installation Instruction

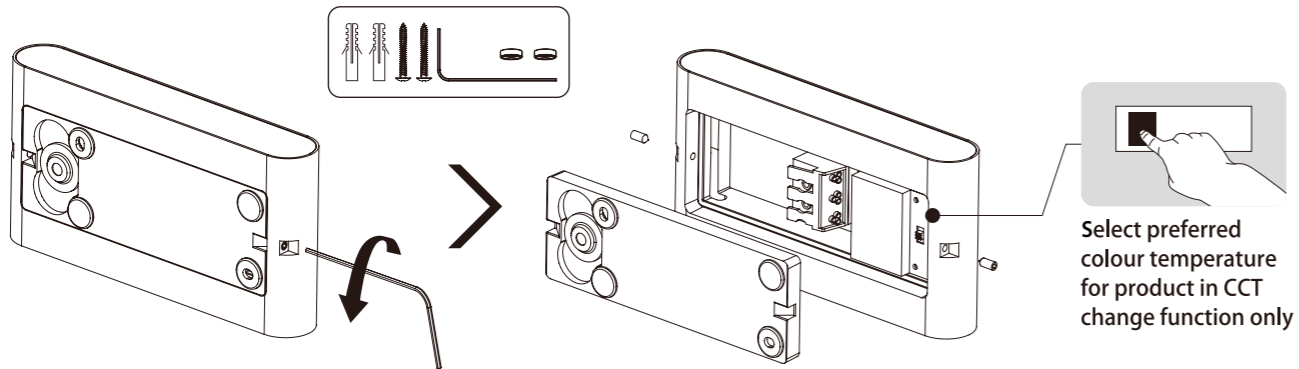
WARNING ⚡

1. Switch off power supply before installation / maintenance.
2. Switch on after completing installation and examination of the circuit.
3. The wall light must be installed and maintained by professional electrician.

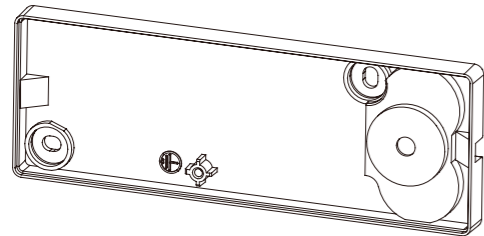


Turn Off
Power Supply

Wall Mounted Installation



Mains Cable entry (1X)



Mains Cable entries (2X)

